

Project ID 2160-07-03
S. 76th St. (CTH U) Bridge over
Forest Home Ave. (STH 24)
Bridge Rehabilitation (B-40-0164)
Milwaukee County

Public Involvement Meeting
October 18, 2023



Project Team

▶ Milwaukee County Department of Transportation (MCDOT)

- Andrea Weddle-Henning, P.E. – Director of Transportation Engineering
andrea.weddle-henning@milwaukeecountywi.gov or (414) 257-5934

▶ Wisconsin Department of Transportation (WisDOT)

- Michael Baird, P.E. – SE Region Local Program, Project Manager
Michael.baird@dot.wi.gov or (262) 548-5918

▶ Kapur – Design Consultant

- Kurt Farrenkopf, P.E. – Consultant Project Manager
kfarrenkopf@kapurinc.com or (414) 751-7226

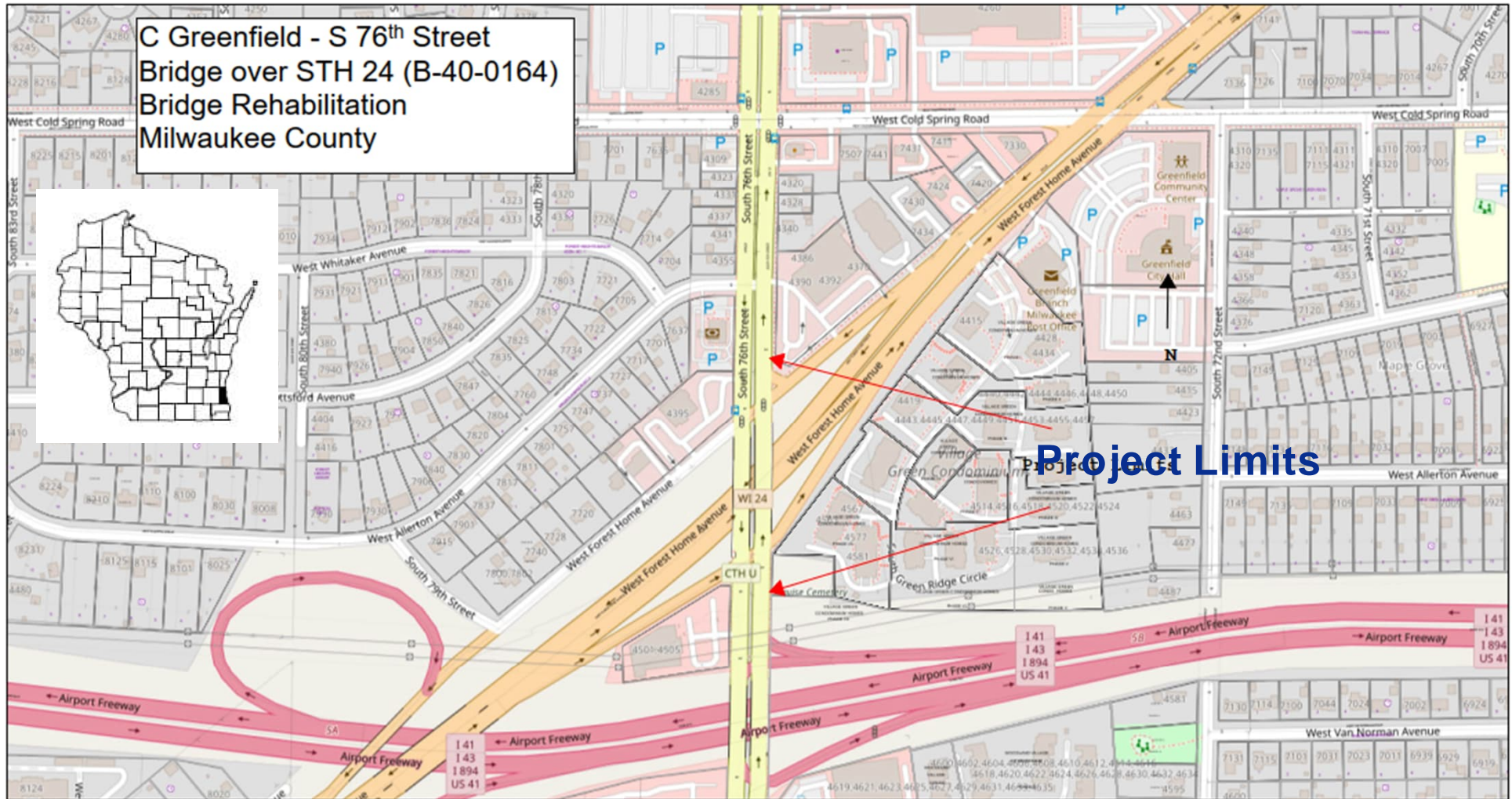


Meeting Goals

- ▶ Project location
- ▶ Project overview and existing conditions
- ▶ Describe the proposed improvements & Typical Sections
- ▶ Summarize design considerations
- ▶ Summarize project schedule
- ▶ Gather input that will assist the design team



S 76th Street Bridge over Forest Home Ave. (STH 24)



MCDOT Project ID: WH010201
WISDOT Project ID: 2160-07-03



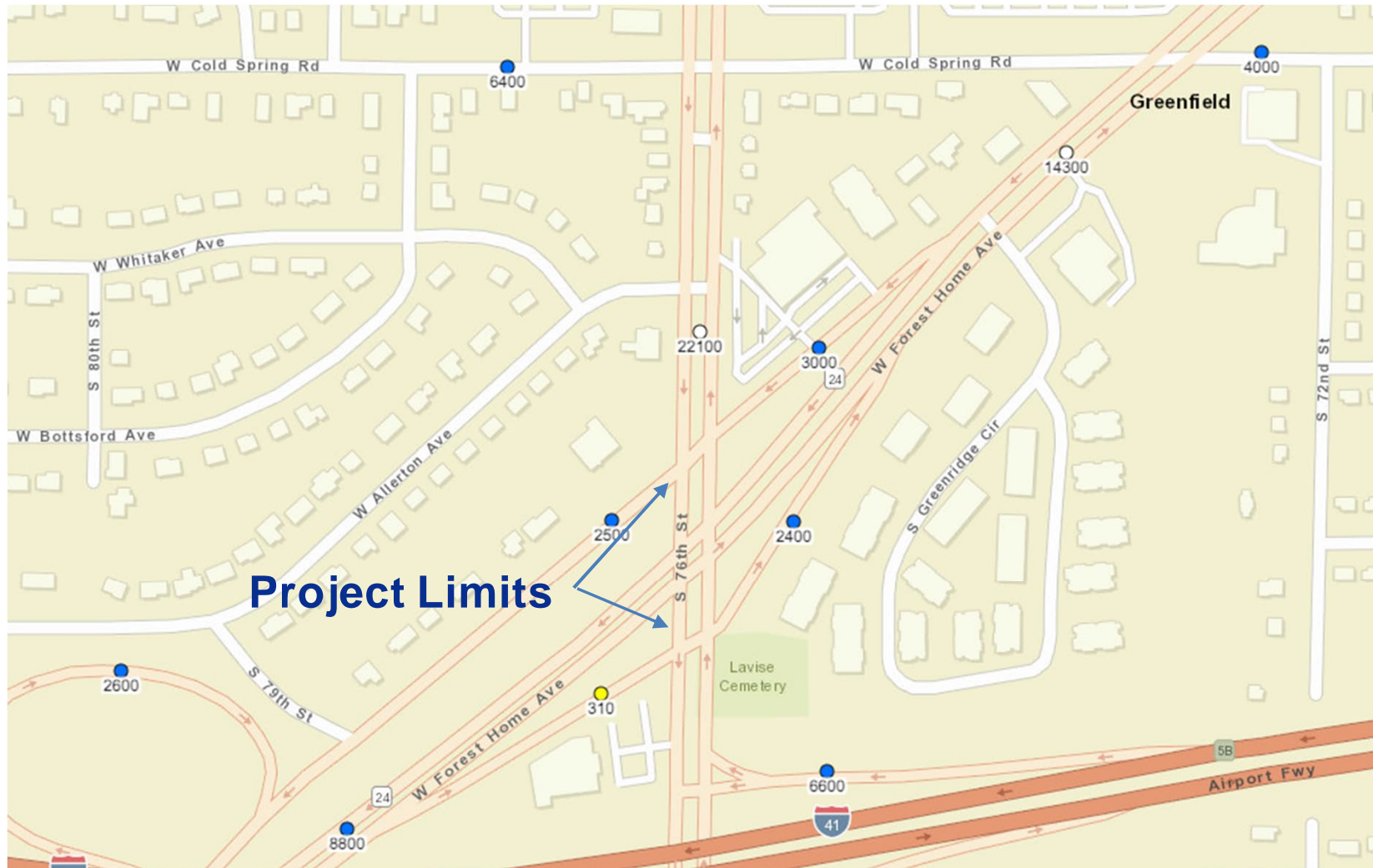
Project Overview

The purpose of the project is to perform bridge rehabilitation work on the S. 76th St. bridge over Forest Home Ave. (STH 24) to maximize service life.

The project will be constructed in 2025.



Traffic Volumes



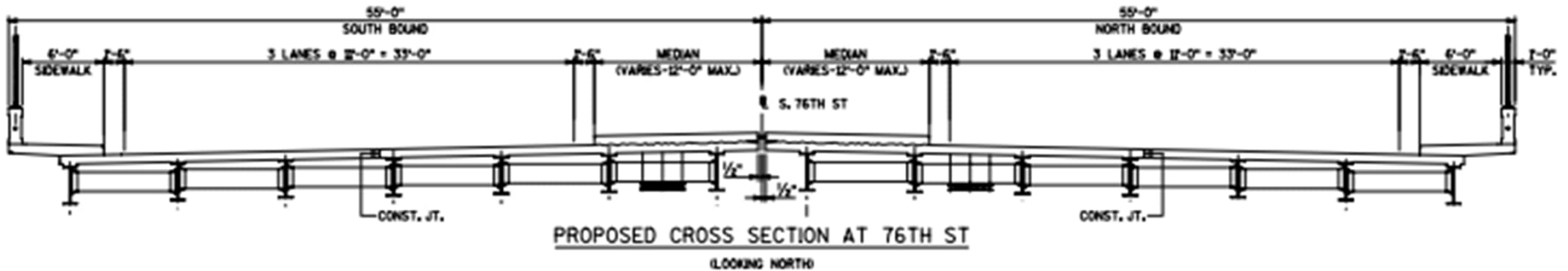
Utilities

Utilities in corridor

- AT&T
- City of Greenfield Sanitary/
Storm Sewer/
- City of Milwaukee Water
- Street Lighting
- Midwest Fiber



Typical Section



Urban Considerations

- Bus Routes 24 and 76 are on S. 76th St.
- Existing sidewalk on both sides
- No on-street bike accommodations



Existing Bridge



Existing Bridge Conditions

- ▶ Satisfactory – with age-based deterioration

Delayed action will result in more costly future repairs.



Deck cracking



Expansion joint damage / leaks



Existing Bridge Conditions

- ▶ Satisfactory – with age-based deterioration

Delayed action will result in more costly future repairs.



Abutment Damage



Parapet Damage



Proposed Improvements

Bridge Improvements

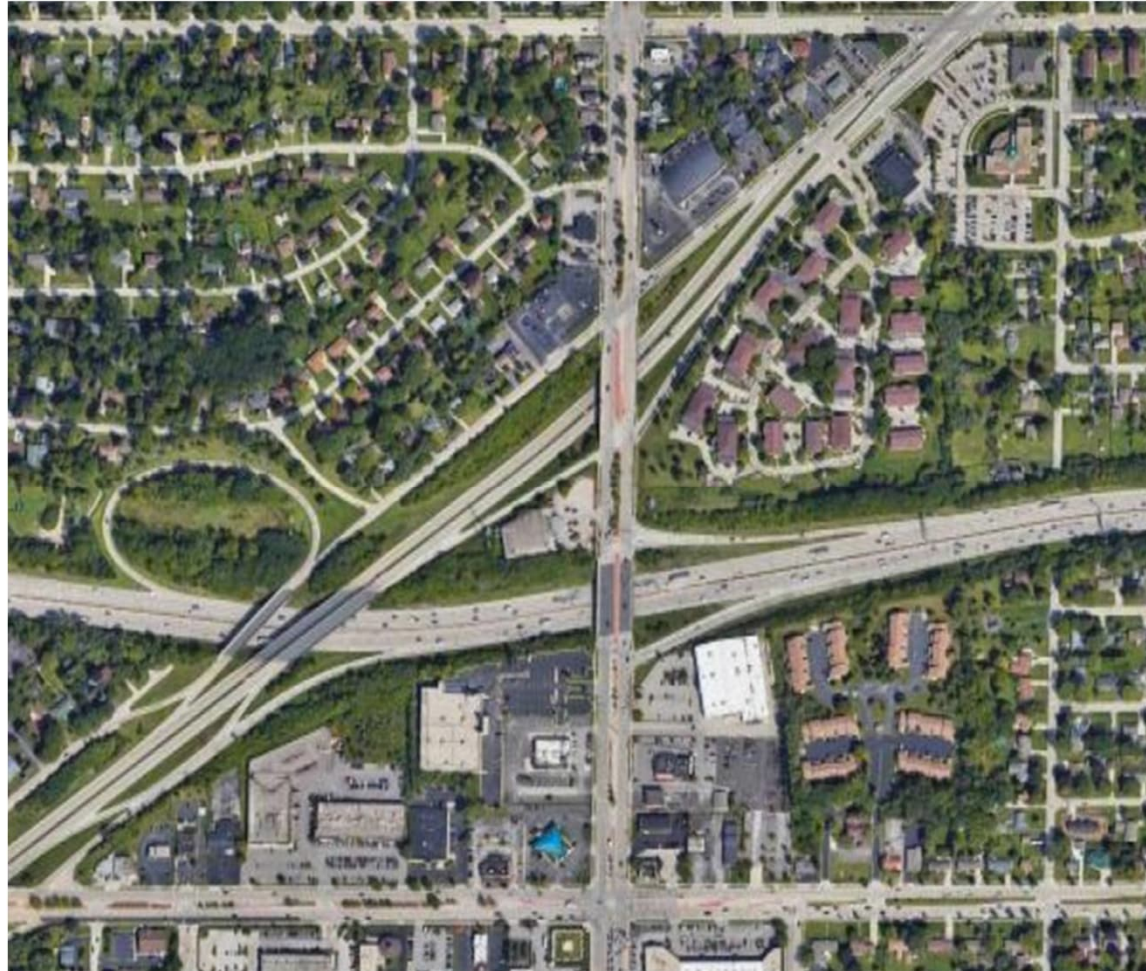
- ▶ Bridge deck sealing
- ▶ Expansion joint repair
- ▶ Parapet and Abutment wall repairs
- ▶ Median offset adjustment on SB Lanes
- ▶ Potential Concrete surface repairs to deck

Roadway Improvements

- ▶ Approach roadway repairs
- ▶ Sidewalk and curb and gutter repairs



Traffic/Construction Staging



Traffic/Construction Staging Considerations

- ▶ Minimize traffic disruption
- ▶ Minimize any impacts to STH 24
- ▶ Safety for public and workers
- ▶ Keep costs within project budget
- ▶ Coordination with others
 - WisDOT STH 24 (W Forest Home) Construction
 - Utilities



Project Design Schedule

ITEM	SCHEDULE DATE	STATUS
Survey	August 2023	On-going
30% Plan Submittal	October 2023	On-going
Traffic Count	Fall 2023	On-going
Section 106 Programmatic Agreement	September 2023	Complete
Local Officials Meeting	October 2023	Prior to PIM
Public Involvement Meeting	October 2023	
Environmental Document	October 2023	In Progress
Preliminary Structure Plan	January 2024	
60% Plan Submittal	January 2024	
Design Study Report	January 2024	
Final Plans Submittal	November 1, 2024	
Let Date	February 11, 2025	
Construction	Summer 2025	



Next Steps

- ▶ Environmental documentation
 - Hazardous Materials Investigation underway
 - Section 106 documentation in progress
 - Asbestos report complete (no asbestos)
- ▶ Refine cost estimates
 - Infra-red scan scheduled
 - Determine detailed rehabilitation scope
- ▶ 30% roadway and bridge design



Thank you for participating!

