



PUBLIC INVOLVEMENT MEETING #2
W. Rawson Avenue (CTH BB) Reconstruction Project
S. 13th Street (CTH V) to S. Howell Avenue (WIS 38)
Milwaukee County
November 16, 2023

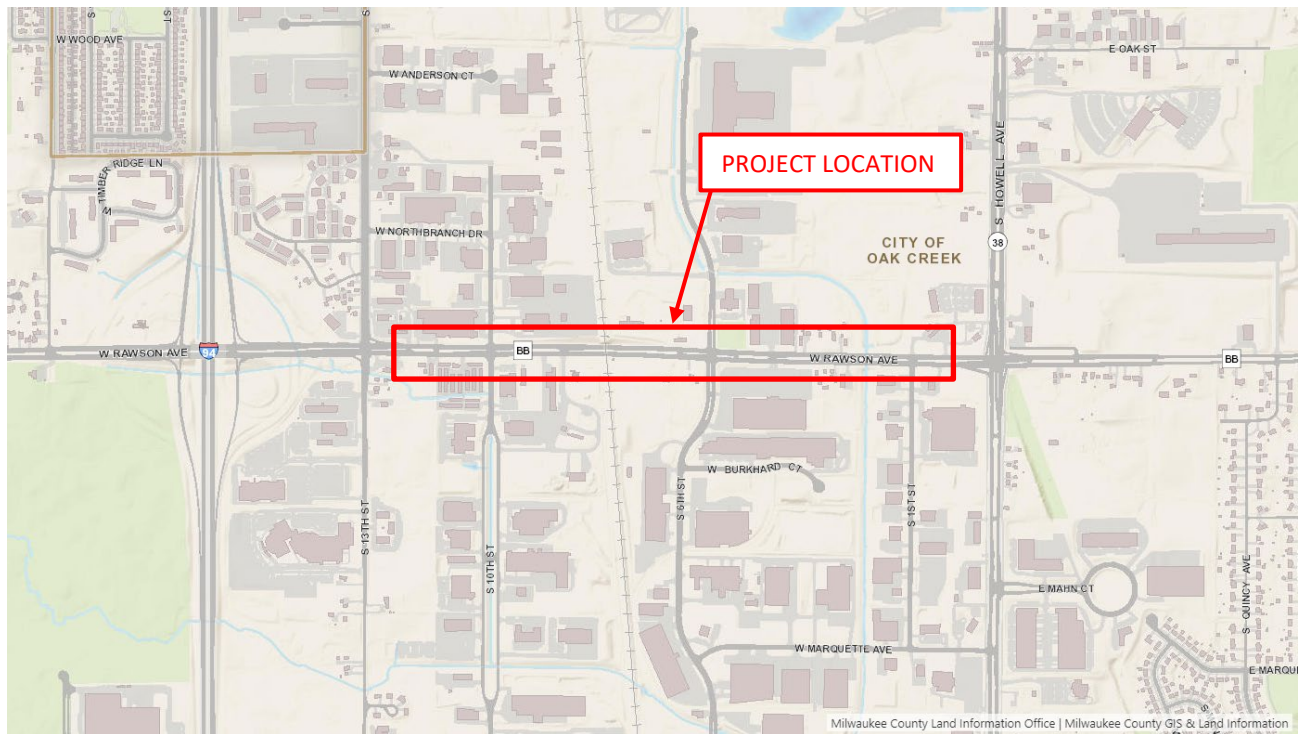
Purpose of Meeting

Welcome to the second Public Involvement Meeting for the W. Rawson Avenue (CTH BB) project. This meeting is being conducted on November 16, 2023 by Milwaukee County in conjunction with the City of Oak Creek.

The purpose of this meeting is to present the updated design being considered for this project and the possible impacts to your property. It is also your opportunity to provide input to the design process.

Location

The project is located in the southern portion of Milwaukee County on County Trunk Highway (CTH) BB (W. Rawson Avenue) in the City of Oak Creek. The project is anticipated to begin east of S. 13th Street (CTH V) and end west of S. Howell Avenue (WIS 38).



Project Objectives

- 1) Replace the deteriorated pavement
- 2) Address flooding and drainage issues
- 3) Maintain or improve the vertical clearance at the Canadian Pacific Railroad underpass
- 4) Rehabilitate the box culvert carrying the North Branch Oak Creek
- 5) Provide bicycle and pedestrian accommodations

Existing Conditions

W. Rawson Avenue (CTH BB) was originally constructed in 1936 with two travel lanes and 8 to 10 inches of concrete pavement. The roadway was reconstructed in 1968 as a six-lane divided urban highway with 9 inches of reinforced concrete pavement on a 6-inch gravel base. W. Rawson Avenue (CTH BB) was rehabilitated in 2006-2007 by milling and rubblizing the concrete pavement and applying a 6-inch asphalt overlay. The roadway has been patched numerous times since then and has reached the end of its structural life. The roadway cannot economically be maintained. There are no bicycle or pedestrian accommodations along this segment of W. Rawson Avenue (CTH BB). The posted speed limit is 40 mph.

Proposed Action

The proposed action for W. Rawson Avenue (CTH BB) consists of reconstructing the existing roadway and includes:

- Removing the existing pavement and replacing it with concrete pavement and curb and gutter
- Installing left turn lanes at median openings
- Updating the roadway pavement markings and signing to current standards and delineating:
 - Six through lanes from S. 13th Street (CTH V) to S. 10th Street
 - Four through lanes and two auxiliary lanes from S. 10th Street to S. Howell Avenue (WIS 38)
- Providing on-street bicycle accommodations in both directions
- Adding sidewalk to both sides
- Rehabilitating the two-cell box culvert (B-40-389) carrying the North Branch Oak Creek
- Replacing storm sewer structures and pipes as needed
- Improving lighting

Design Parameters

Average Daily Traffic (2021)	19,900-24,700 vehicles per day
Average Daily Traffic (2045)	25,300-31,400 vehicles per day
Truck Percentage	13.5%
Design Speed	45 miles per hour

Construction

The roadway is proposed to remain open during staged construction. Access will be maintained to properties at all times during construction including emergency vehicles.

Construction is anticipated to begin in the spring of 2025 and take approximately one year to complete, weather permitting.

Anticipated Schedule

Environmental Document	November 2023
Real Estate Acquisitions Complete	August 2024
Final Plans Complete	November 2024
Construction Begins	Spring 2025

In addition to the open house Public Involvement Meeting, project information can be obtained online:
<https://county.milwaukee.gov/EN/Department-of-Transportation/Transportation-Services/Public-Involvement-Meetings>