

# **W. RAWSON AVENUE (COUNTY BB) RECONSTRUCTION PROJECT**

## **S. 13TH STREET (COUNTY V) TO S. HOWELL AVENUE (WIS 38)**

### **MILWAUKEE COUNTY**

#### **Project Objectives**

- Replace Pavement
- Improve Drainage
- Maintain or Improve Vertical Clearance under Railroad Bridge
- Rehabilitate Box Culvert Carrying North Branch Oak Creek
- Provide Accommodations for Pedestrians and Bicycles

#### **Proposed Action**

- Removing the existing pavement and replacing it with concrete pavement and curb and gutter
- Installing left turn lanes at median openings
- Updating the roadway pavement markings and signing to current standards and delineating:
  - Six through lanes from S. 13th Street (COUNTY V) to S. 10th Street
  - Four through lanes and two auxiliary lanes from S. 10th Street to S. Howell Avenue (WIS 38)
- Providing on-street bicycle accommodations in both directions
- Adding sidewalk to both sides
- Rehabilitating the two-cell box culvert (B-40-389) carrying the North Branch Oak Creek
- Replacing storm sewer structures and pipes as needed
- Improving lighting

#### **Construction**

- The roadway is proposed to remain open during staged construction
- Access will be maintained to properties at all times during construction including emergency vehicles
- Construction is anticipated to begin in the spring of 2025 and take approximately one year to complete, weather permitting

#### **Anticipated Schedule**

- Environmental Report November 2023
- Real Estate Acquisitions Complete August 2024
- Final Plans Complete November 2024
- Construction Begins Spring 2025

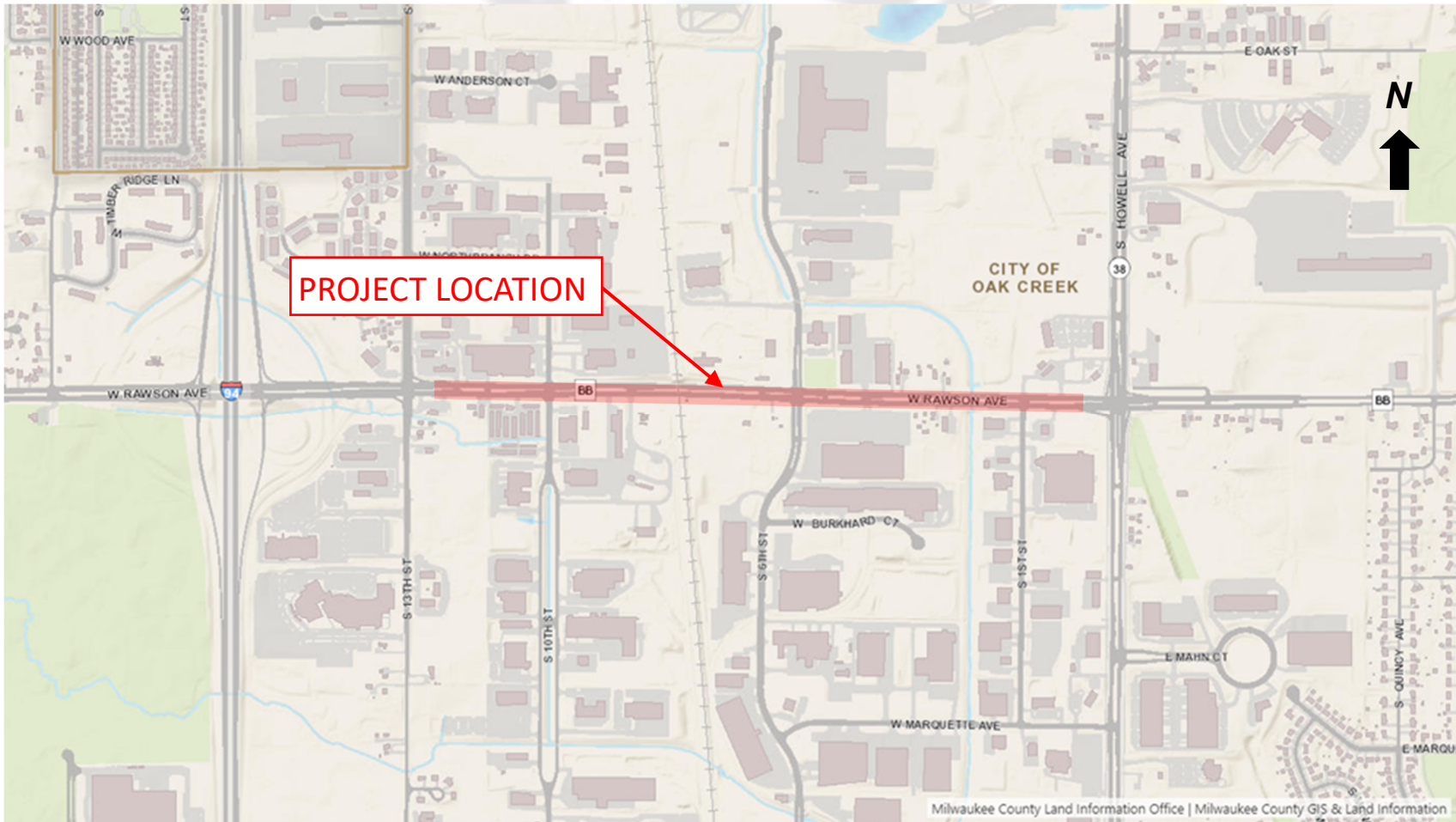
WisDOT No. 2050-08-01/MCDOT No. WH0247011

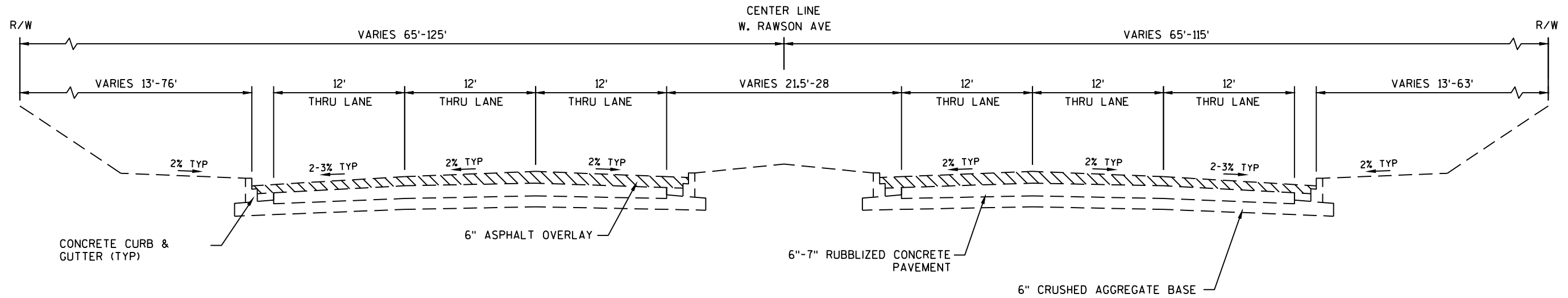
W. Rawson Avenue (COUNTY BB)

S. 13th Street (COUNTY V) to S. Howell Ave (WIS 38)

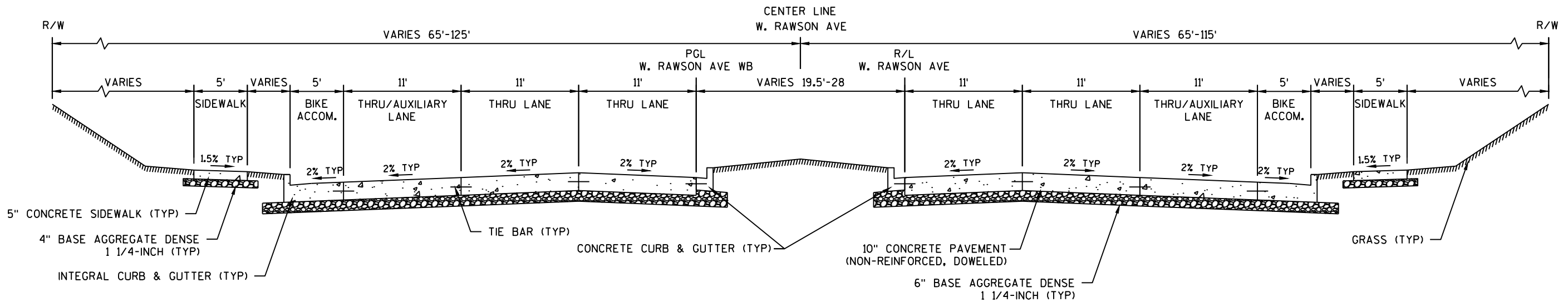
Milwaukee County

Project Location Map

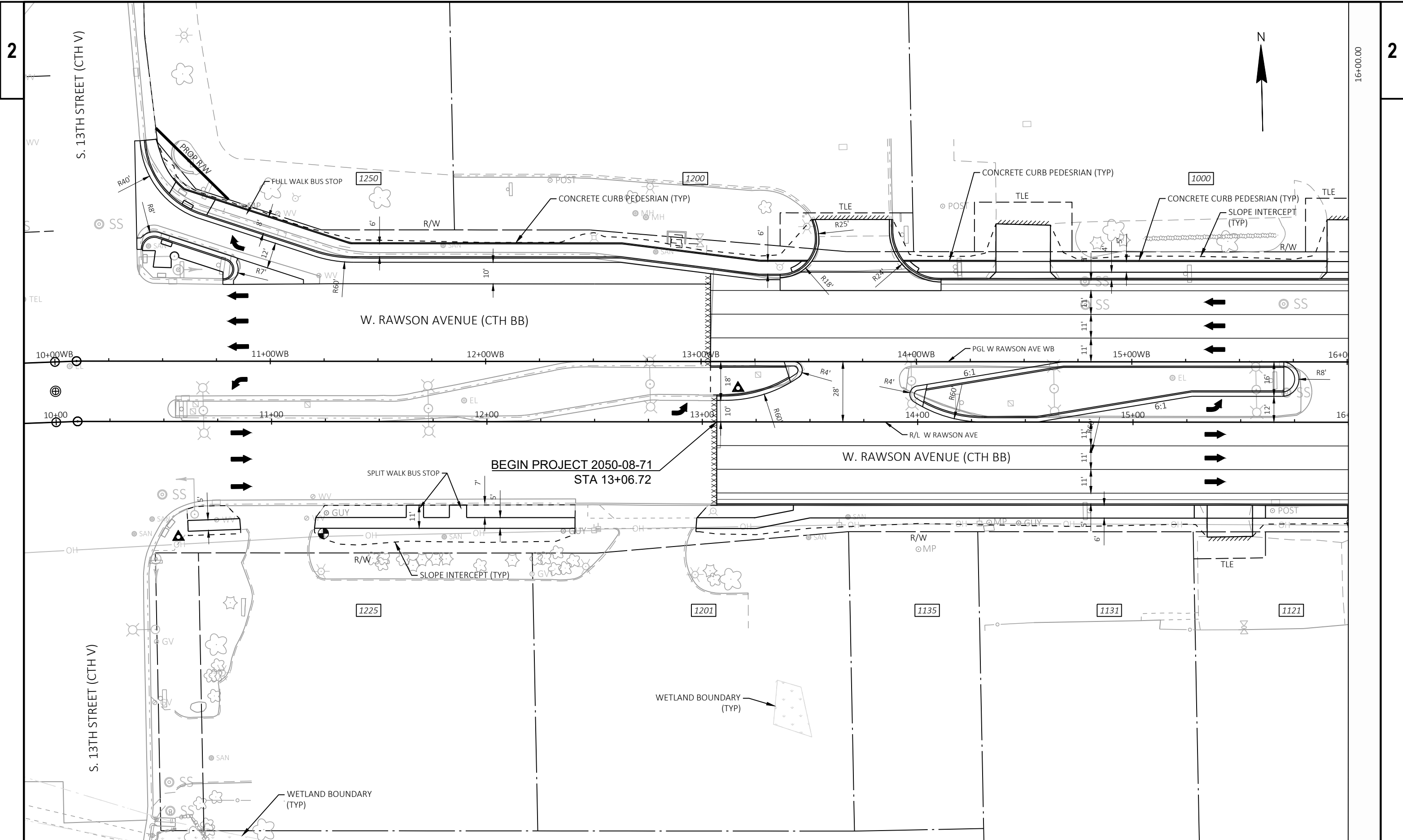




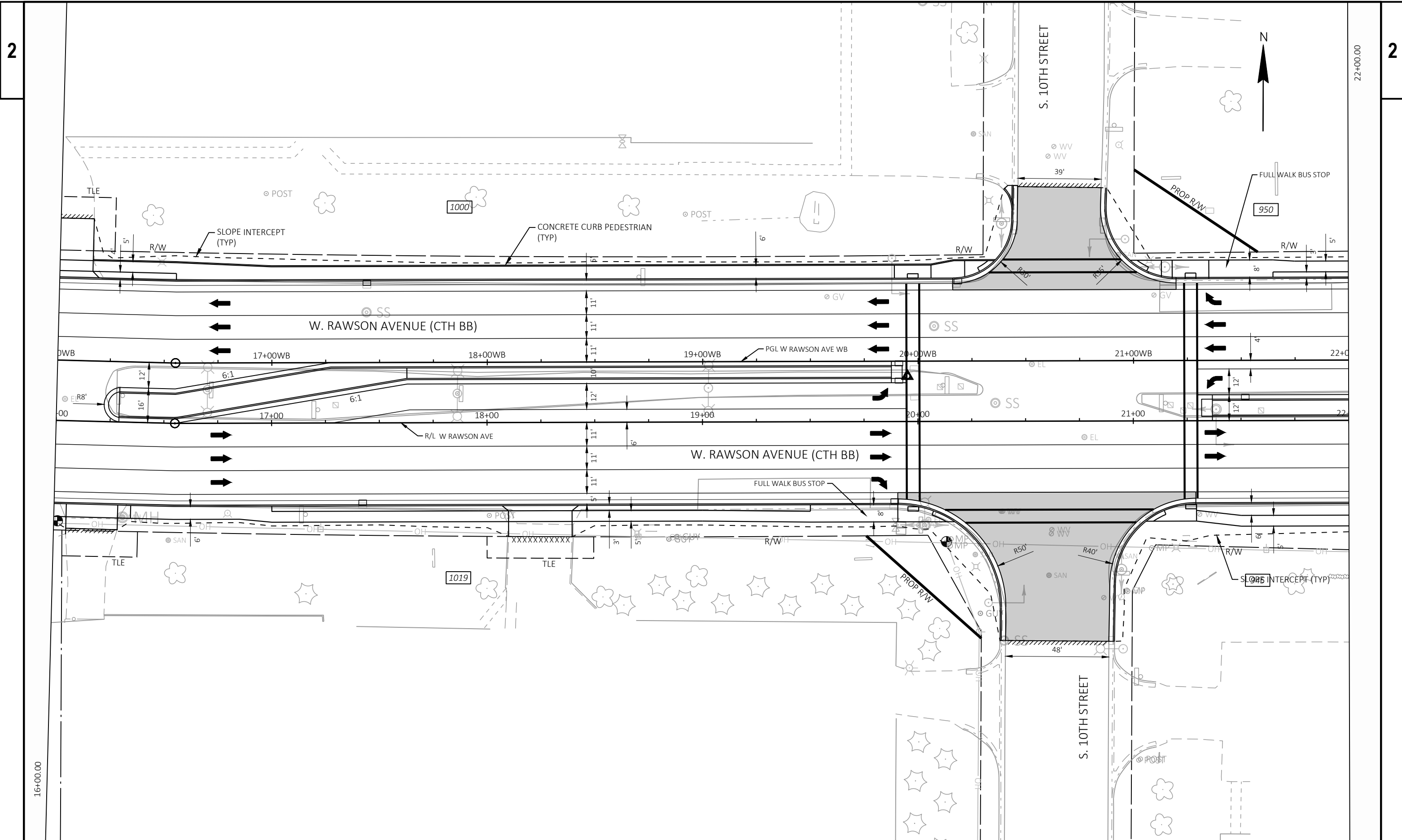
TYPICAL EXISTING SECTION  
W. RAWSON AVENUE  
S. 13TH STREET (CTH V) TO S. HOWELL AVENUE (STH 38)



TYPICAL FINISHED SECTION  
W. RAWSON AVENUE  
S. 13TH STREET (CTH V) TO S. HOWELL AVENUE (STH 38)



PROJECT NO: 2050-08-71	HWY: CTH BB	COUNTY: MILWAUKEE	PLAN DETAILS	SHEET	<b>E</b>
------------------------	-------------	-------------------	--------------	-------	----------



PROJECT NO: 2050-08-71

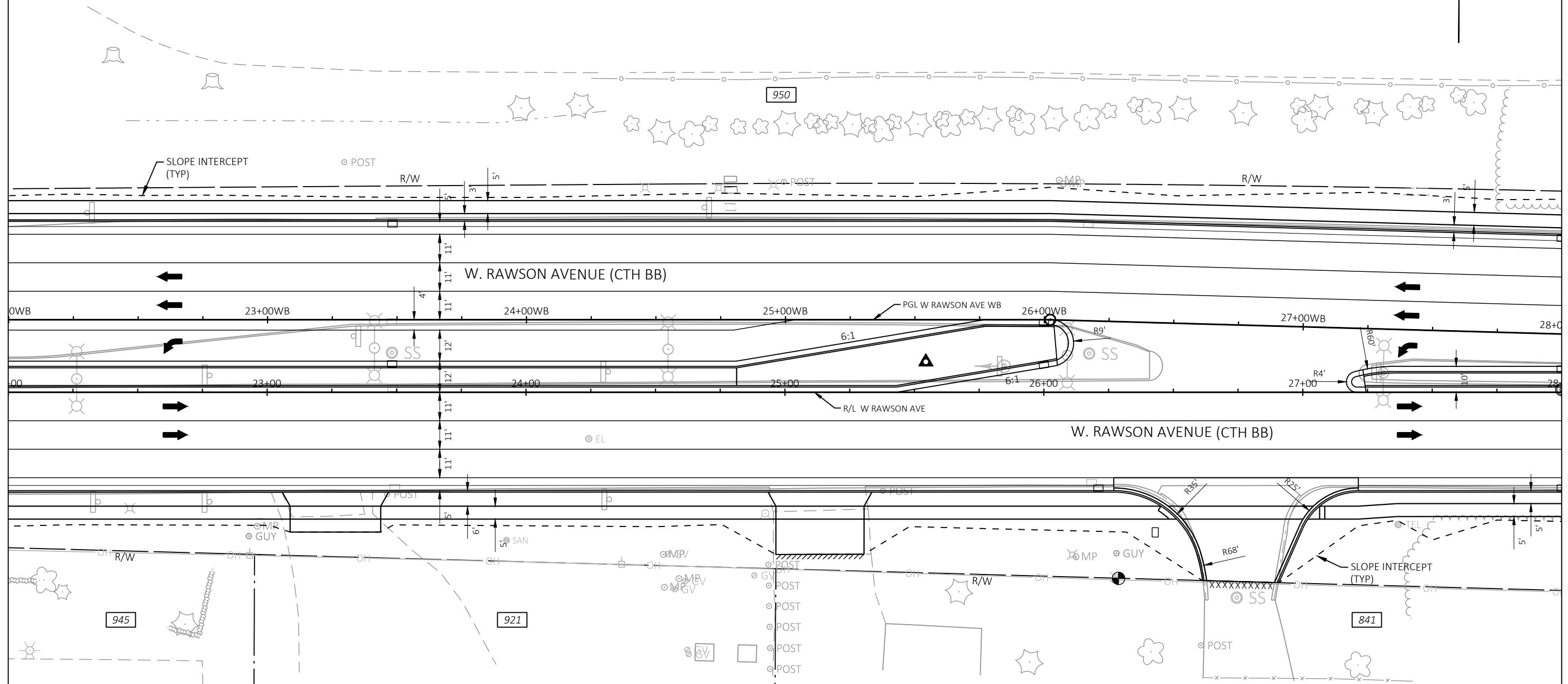
HWY: CTH BB

COUNTY: MILWAUKEE

PLAN DETAILS

SHEET

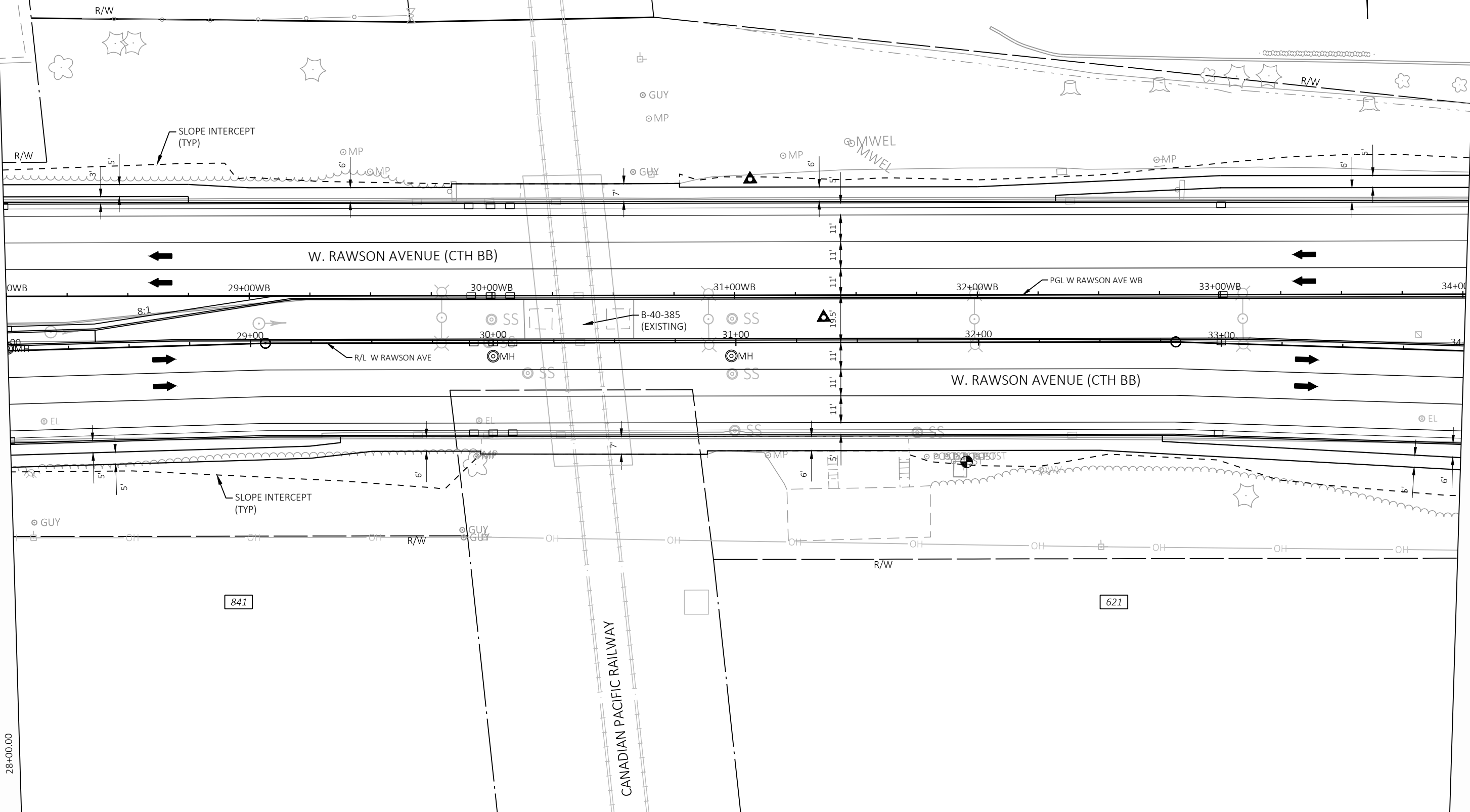
E



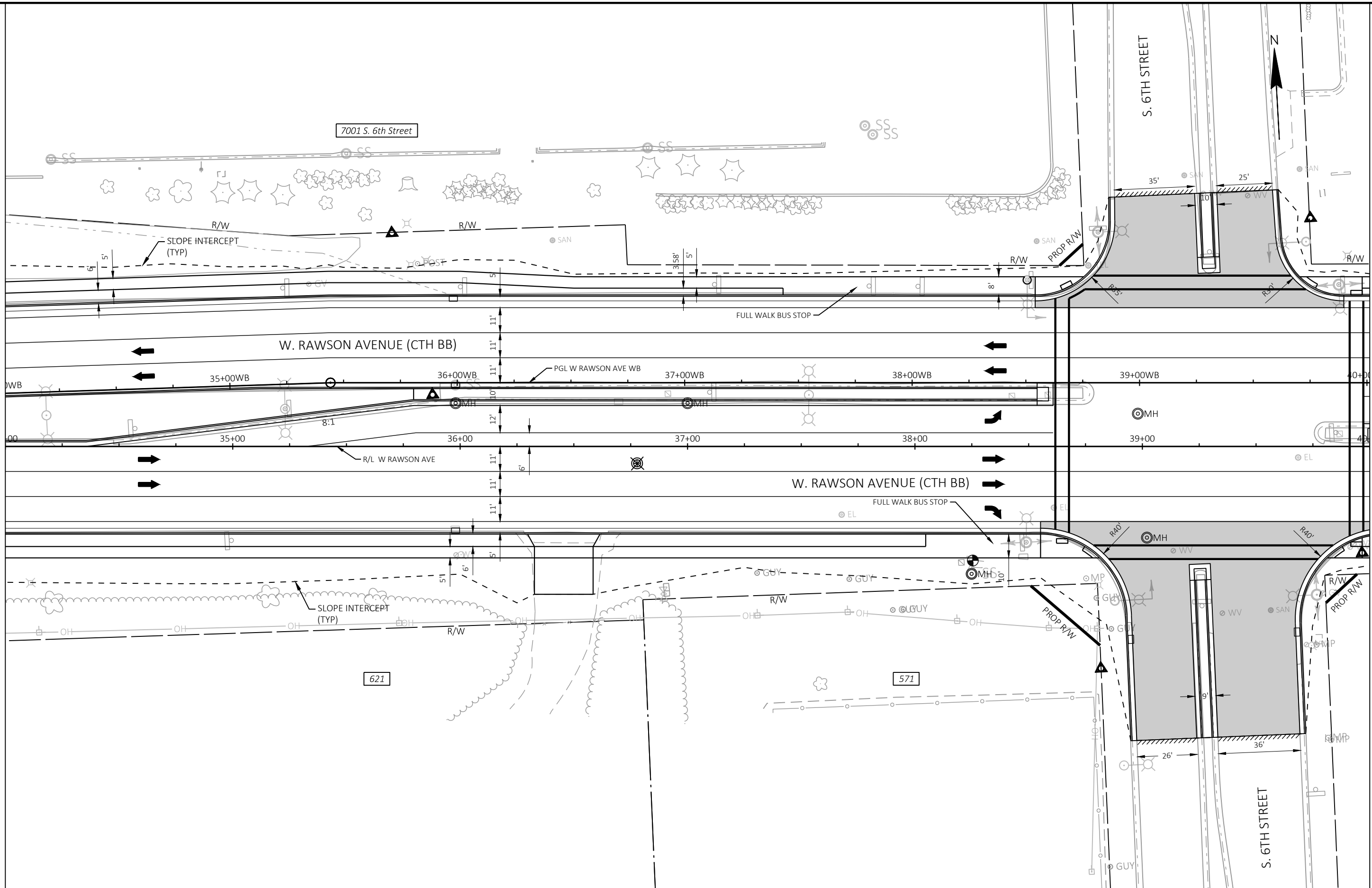


7000 S. 10th Street

7001 S. 6th Street



PROJECT NO: 2050-08-71	HWY: CTH BB	COUNTY: MILWAUKEE	PLAN DETAILS	SHEET	E
------------------------	-------------	-------------------	--------------	-------	---



PROJECT NO: 2050-08-71

HWY: CTH BB

COUNTY: MILWAUKEE

PLAN DETAILS

SHEET

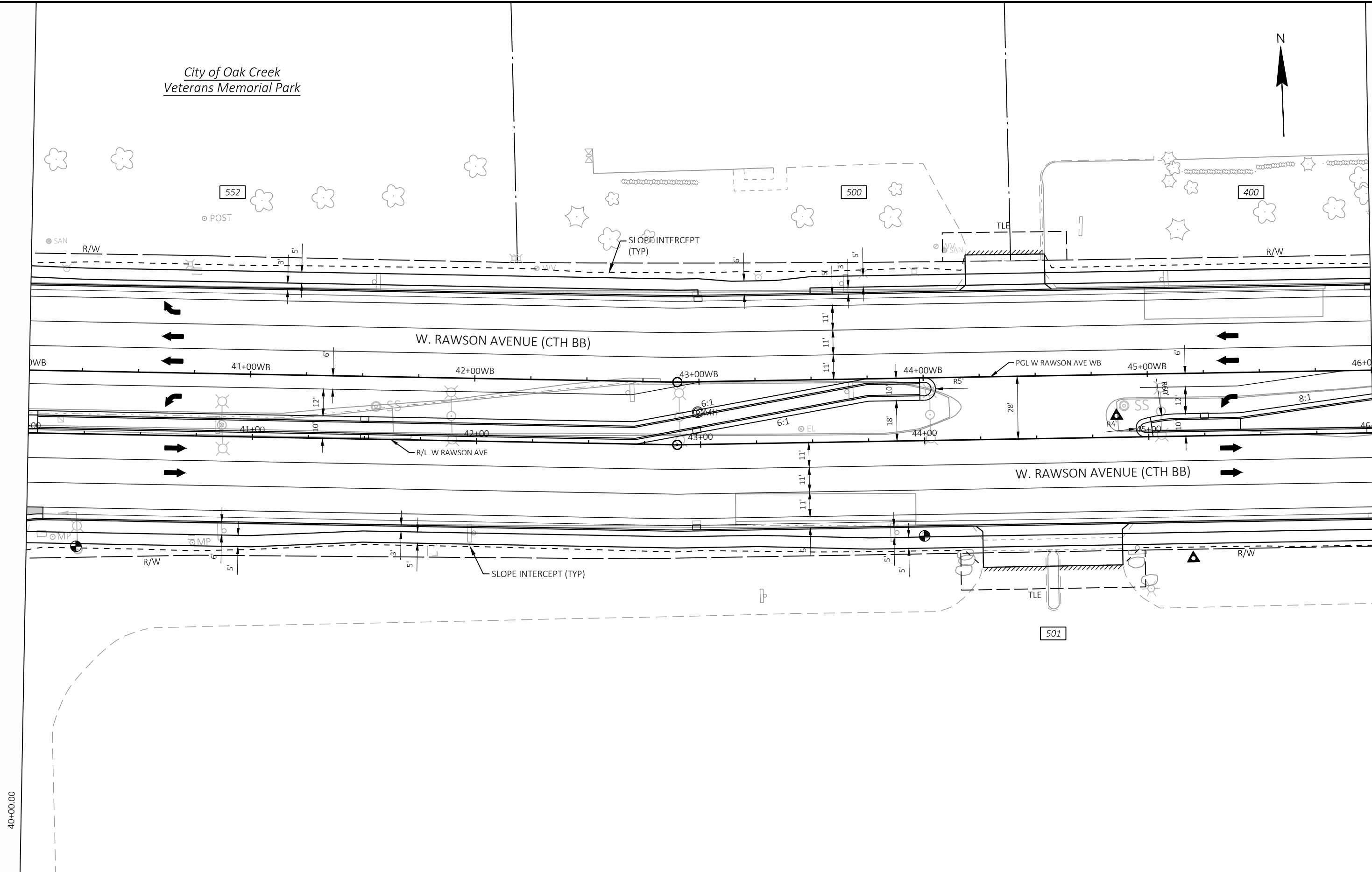
E

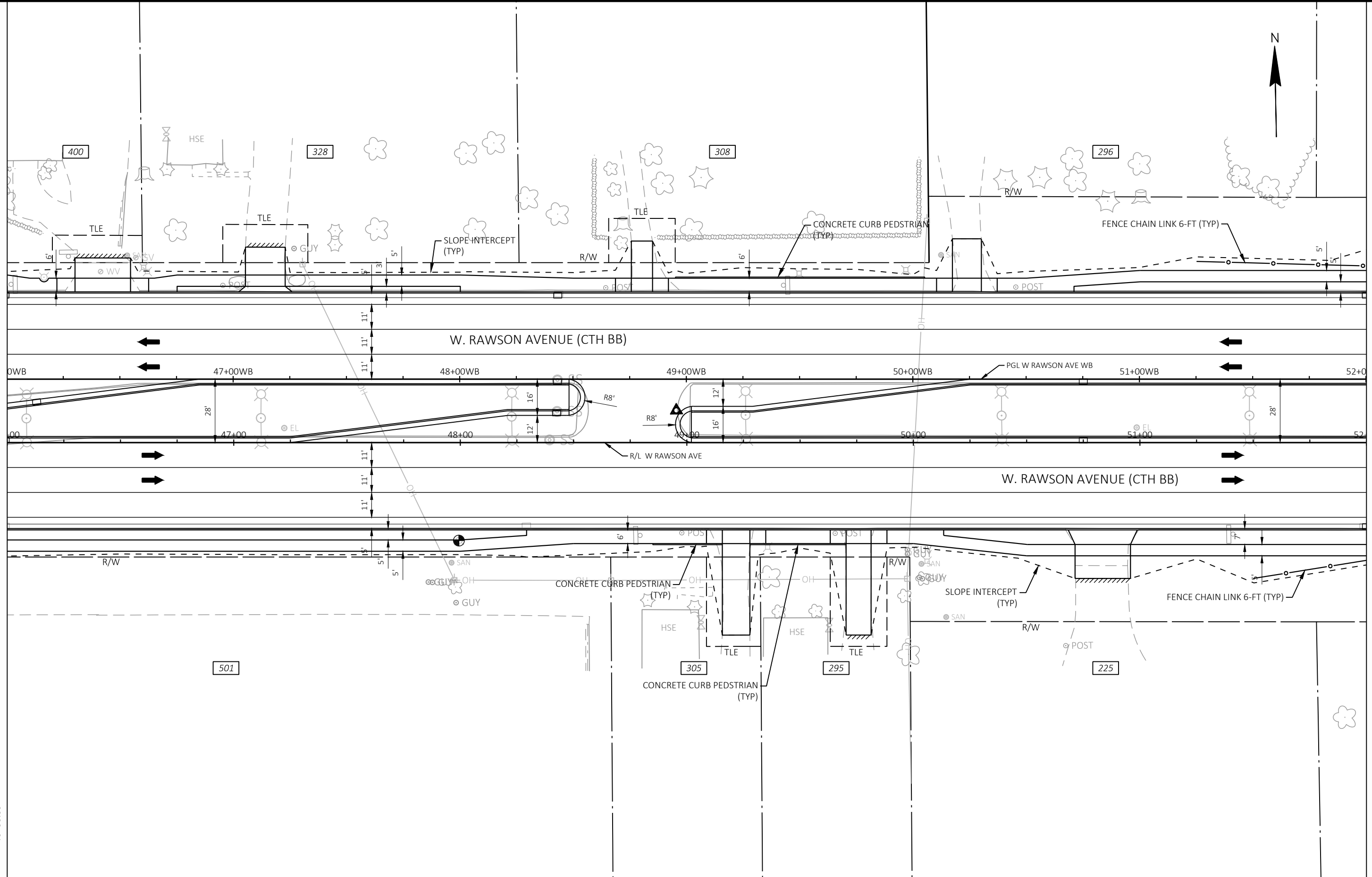


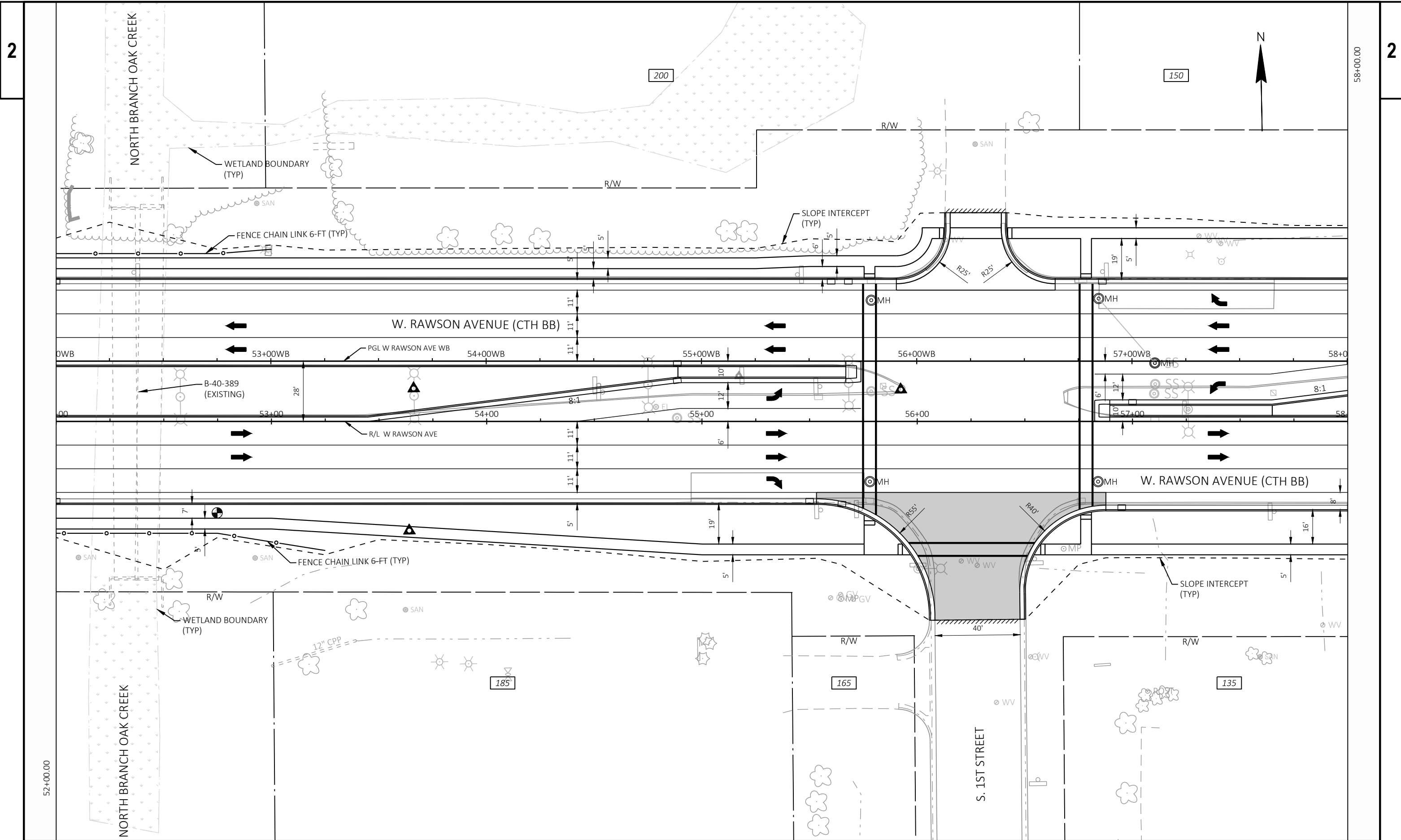
City of Oak Creek  
Veterans Memorial Park

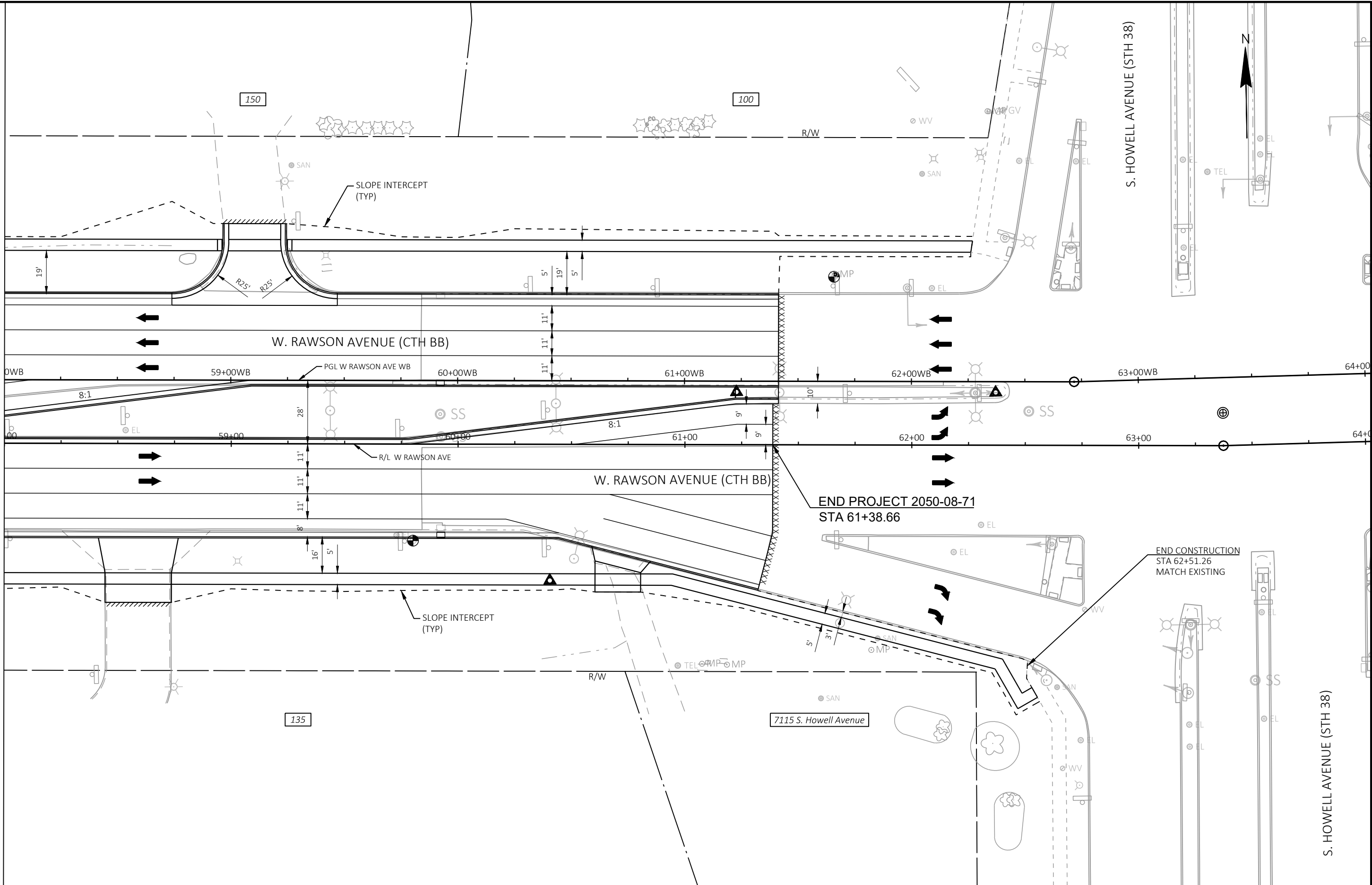


46+00.00

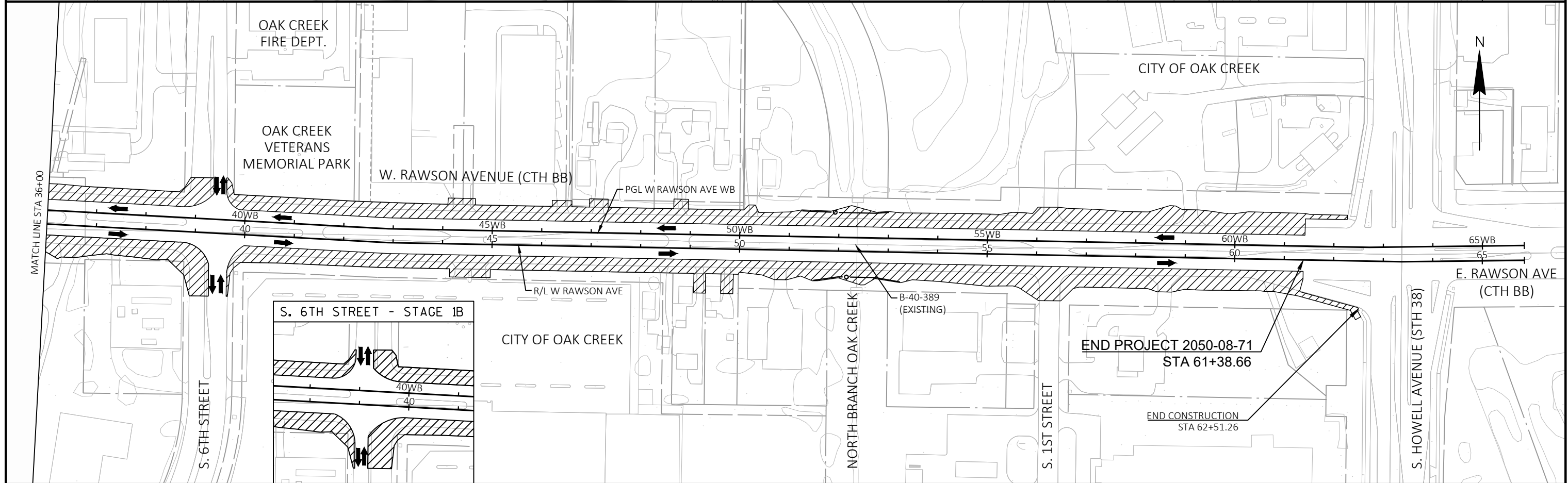
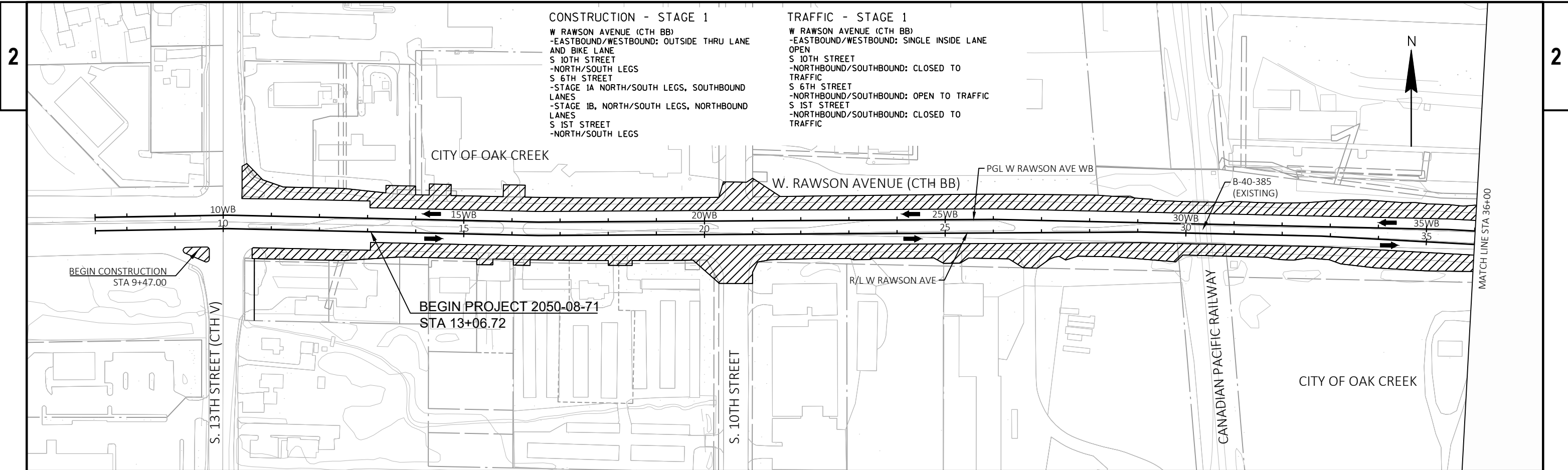




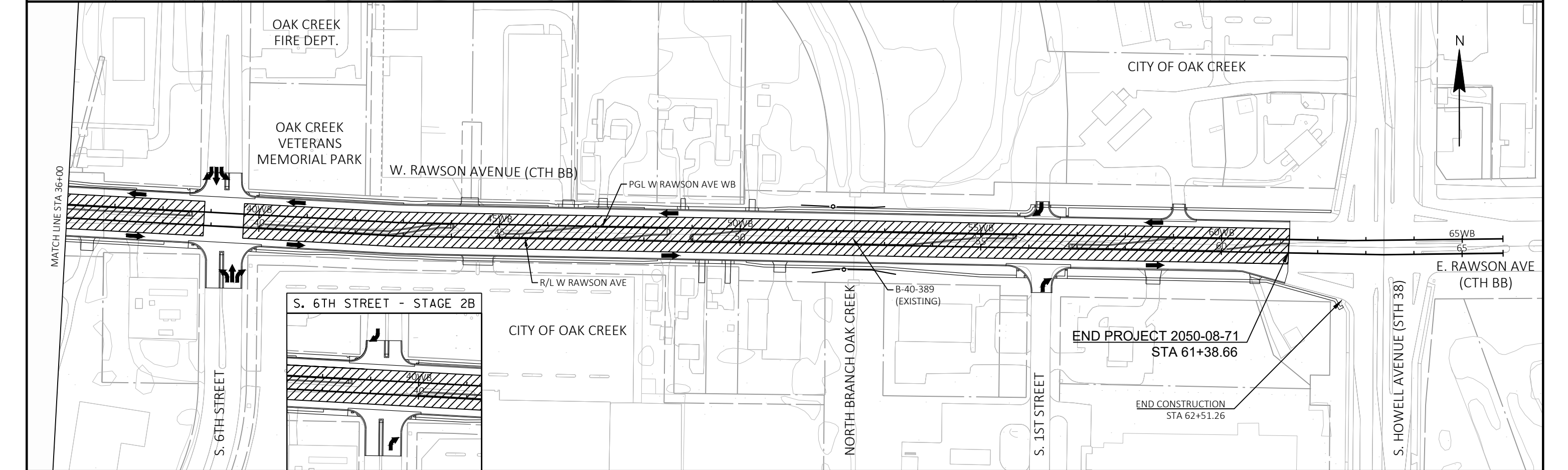
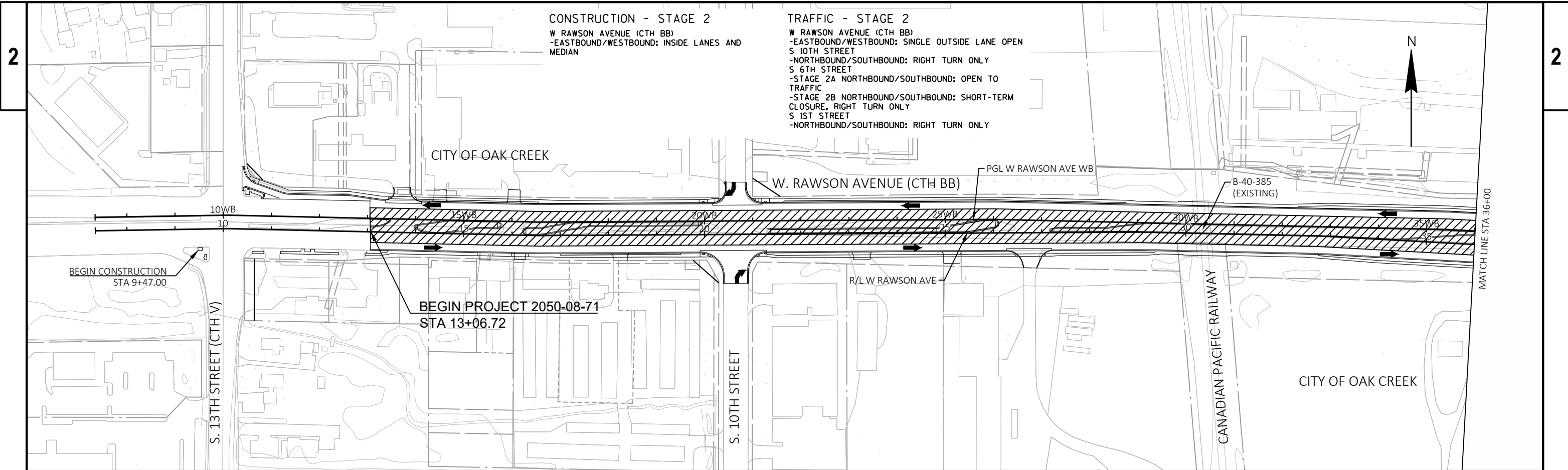




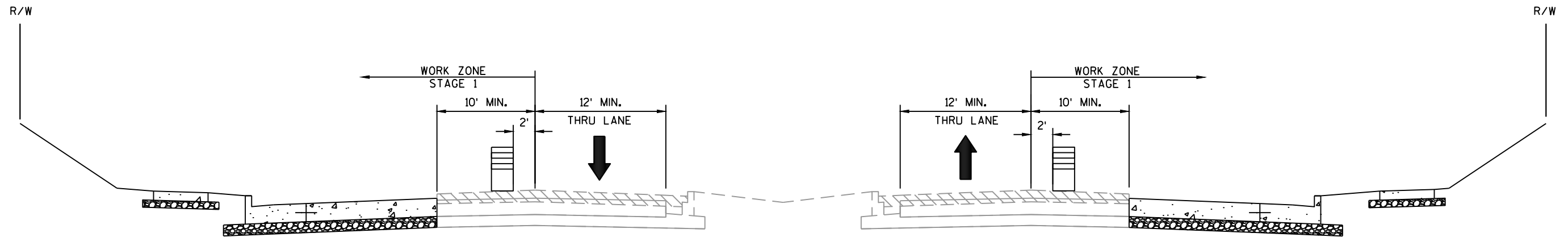
PROJECT NO: 2050-08-71	HWY: CTH BB	COUNTY: MILWAUKEE	PLAN DETAILS	SHEET <b>E</b>
------------------------	-------------	-------------------	--------------	----------------



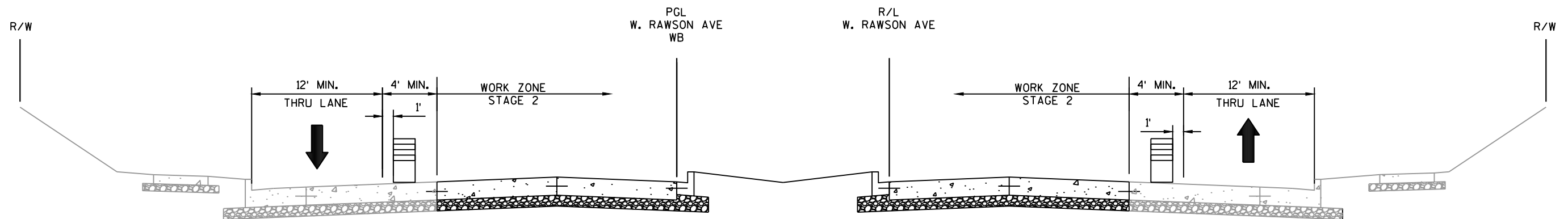
PROJECT NO: 2050-08-71      HWY: CTH BB      COUNTY: MILWAUKEE      TRAFFIC CONTROL OVERVIEW-STAGE 1      SHEET      **E**



PROJECT NO: 2050-08-71	HWY: CTH BB	COUNTY: MILWAUKEE	TRAFFIC CONTROL OVERVIEW-STAGE 2	SHEET	<b>E</b>
------------------------	-------------	-------------------	----------------------------------	-------	----------



TYPICAL SECTION - STAGE 1  
W. RAWSON AVENUE



TYPICAL SECTION - STAGE 2  
W. RAWSON AVENUE