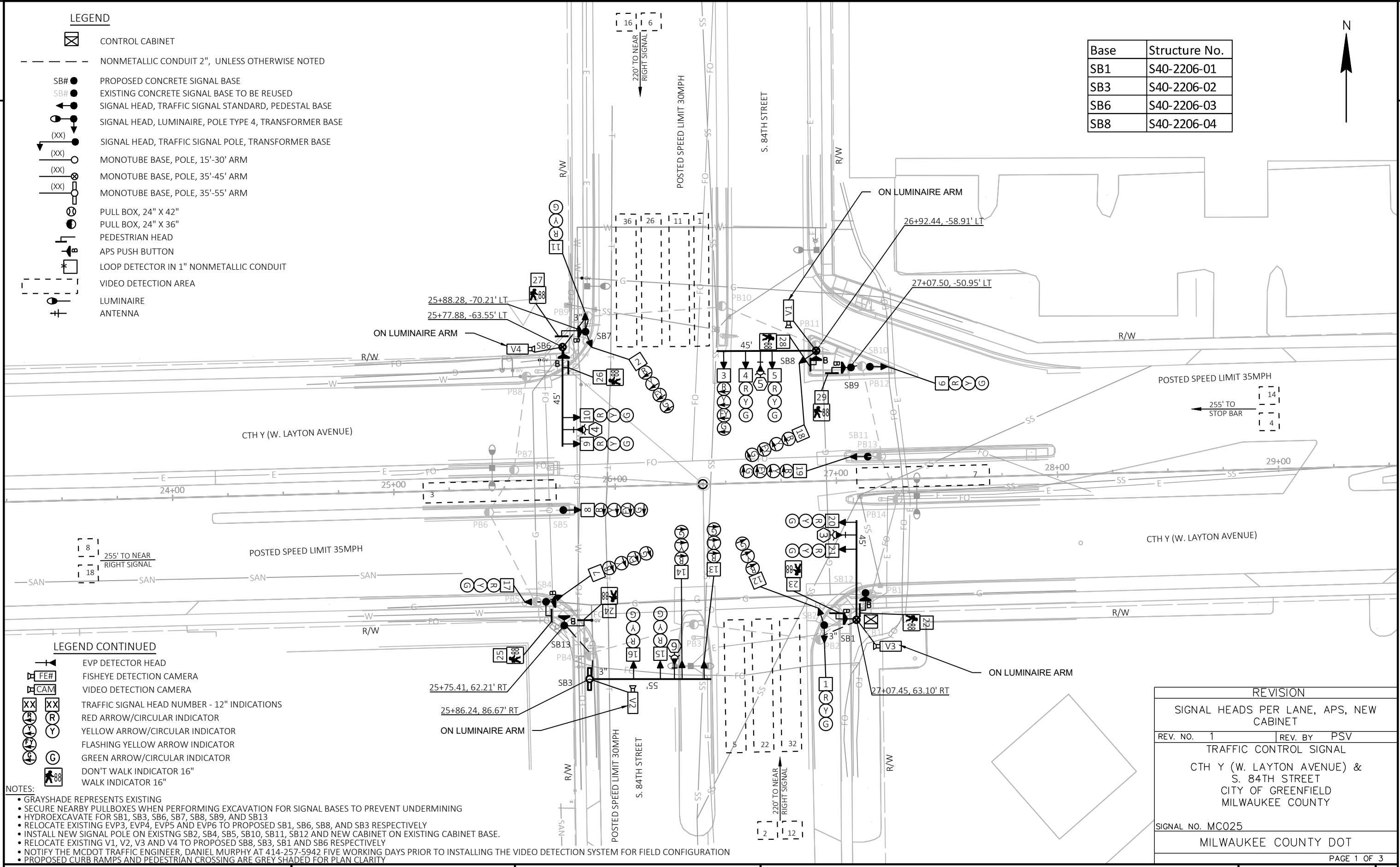


LEGEND

- CONTROL CABINET
- NONMETALLIC CONDUIT 2", UNLESS OTHERWISE NOTED
- SB# PROPOSED CONCRETE SIGNAL BASE
- SB# EXISTING CONCRETE SIGNAL BASE TO BE REUSED
- SIGNAL HEAD, TRAFFIC SIGNAL STANDARD, PEDESTAL BASE
- SIGNAL HEAD, LUMINAIRE, POLE TYPE 4, TRANSFORMER BASE
- SIGNAL HEAD, TRAFFIC SIGNAL POLE, TRANSFORMER BASE
- MONOTUBE BASE, POLE, 15'-30' ARM
- MONOTUBE BASE, POLE, 35'-45' ARM
- MONOTUBE BASE, POLE, 35'-55' ARM
- PULL BOX, 24" X 42"
- PULL BOX, 24" X 36"
- PEDESTRIAN HEAD
- APS PUSH BUTTON
- LOOP DETECTOR IN 1" NONMETALLIC CONDUIT
- VIDEO DETECTION AREA
- LUMINAIRE
- ANTENNA

Base	Structure No.
SB1	S40-2206-01
SB3	S40-2206-02
SB6	S40-2206-03
SB8	S40-2206-04

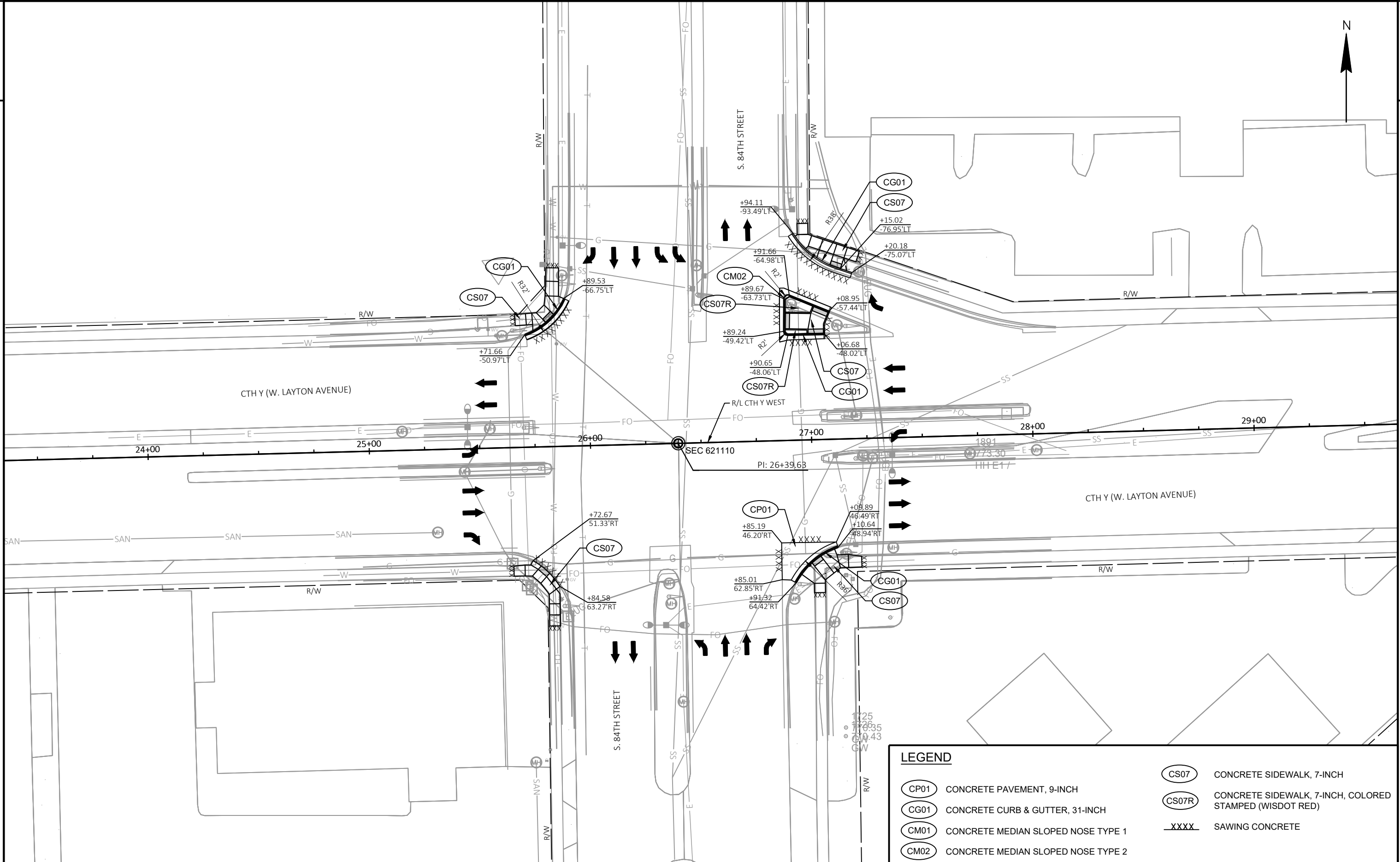


LEGEND CONTINUED

- EVP DETECTOR HEAD
- FE# FISHEYE DETECTION CAMERA
- CAM VIDEO DETECTION CAMERA
- TRAFFIC SIGNAL HEAD NUMBER - 12" INDICATIONS
- RED ARROW/CIRCULAR INDICATOR
- YELLOW ARROW/CIRCULAR INDICATOR
- FLASHING YELLOW ARROW INDICATOR
- GREEN ARROW/CIRCULAR INDICATOR
- DON'T WALK INDICATOR 16"
- WALK INDICATOR 16"

- NOTES:
- GRAYSHADE REPRESENTS EXISTING
 - SECURE NEARBY PULLBOXES WHEN PERFORMING EXCAVATION FOR SIGNAL BASES TO PREVENT UNDERMINING
 - HYDROEXCAVATE FOR SB1, SB3, SB6, SB7, SB8, SB9, AND SB13
 - RELOCATE EXISTING EVP3, EVP4, EVP5 AND EVP6 TO PROPOSED SB1, SB6, SB8, AND SB3 RESPECTIVELY
 - INSTALL NEW SIGNAL POLE ON EXISTING SB2, SB4, SB5, SB10, SB11, SB12 AND NEW CABINET ON EXISTING CABINET BASE.
 - RELOCATE EXISTING V1, V2, V3 AND V4 TO PROPOSED SB8, SB3, SB1 AND SB6 RESPECTIVELY
 - NOTIFY THE MCDOT TRAFFIC ENGINEER, DANIEL MURPHY AT 414-257-5942 FIVE WORKING DAYS PRIOR TO INSTALLING THE VIDEO DETECTION SYSTEM FOR FIELD CONFIGURATION
 - PROPOSED CURB RAMPS AND PEDESTRIAN CROSSING ARE GREY SHADED FOR PLAN CLARITY

REVISION	
SIGNAL HEADS PER LANE, APS, NEW CABINET	
REV. NO. 1	REV. BY PSV
TRAFFIC CONTROL SIGNAL	
CTH Y (W. LAYTON AVENUE) & S. 84TH STREET	
CITY OF GREENFIELD MILWAUKEE COUNTY	
SIGNAL NO. MC025	
MILWAUKEE COUNTY DOT	
PAGE 1 OF 3	

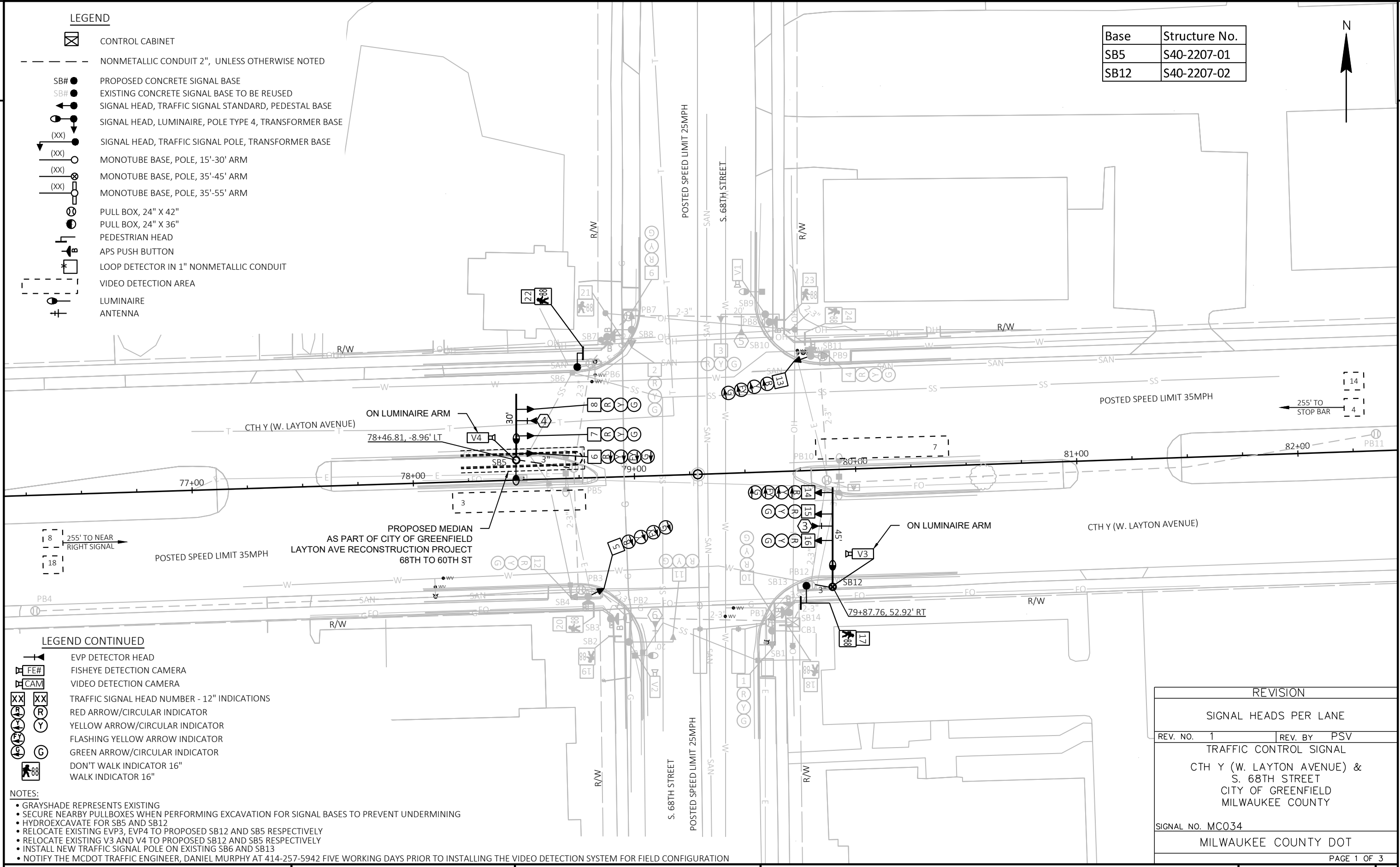


LEGEND	
	CONCRETE PAVEMENT, 9-INCH
	CONCRETE CURB & GUTTER, 31-INCH
	CONCRETE MEDIAN SLOPED NOSE TYPE 1
	CONCRETE MEDIAN SLOPED NOSE TYPE 2
	CONCRETE SIDEWALK, 7-INCH
	CONCRETE SIDEWALK, 7-INCH, COLORED STAMPED (WISDOT RED)
	SAWING CONCRETE

LEGEND

- CONTROL CABINET
- NONMETALLIC CONDUIT 2", UNLESS OTHERWISE NOTED
- SB# ● PROPOSED CONCRETE SIGNAL BASE
- SB# ● EXISTING CONCRETE SIGNAL BASE TO BE REUSED
- SIGNAL HEAD, TRAFFIC SIGNAL STANDARD, PEDESTAL BASE
- SIGNAL HEAD, LUMINAIRE, POLE TYPE 4, TRANSFORMER BASE
- (XX) SIGNAL HEAD, TRAFFIC SIGNAL POLE, TRANSFORMER BASE
- (XX) MONOTUBE BASE, POLE, 15'-30' ARM
- (XX) MONOTUBE BASE, POLE, 35'-45' ARM
- (XX) MONOTUBE BASE, POLE, 35'-55' ARM
- PULL BOX, 24" X 42"
- PULL BOX, 24" X 36"
- PEDESTRIAN HEAD
- APS PUSH BUTTON
- LOOP DETECTOR IN 1" NONMETALLIC CONDUIT
- VIDEO DETECTION AREA
- LUMINAIRE
- ANTENNA

Base	Structure No.
SB5	S40-2207-01
SB12	S40-2207-02




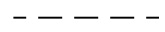












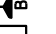

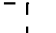
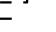

LEGEND CONTINUED

- EVP DETECTOR HEAD
- FE# FISHEYE DETECTION CAMERA
- CAM VIDEO DETECTION CAMERA
- (XX) TRAFFIC SIGNAL HEAD NUMBER - 12" INDICATIONS
- (R) RED ARROW/CIRCULAR INDICATOR
- (Y) YELLOW ARROW/CIRCULAR INDICATOR
- (F) FLASHING YELLOW ARROW INDICATOR
- (G) GREEN ARROW/CIRCULAR INDICATOR
- 88 DON'T WALK INDICATOR 16"
- 16 WALK INDICATOR 16"

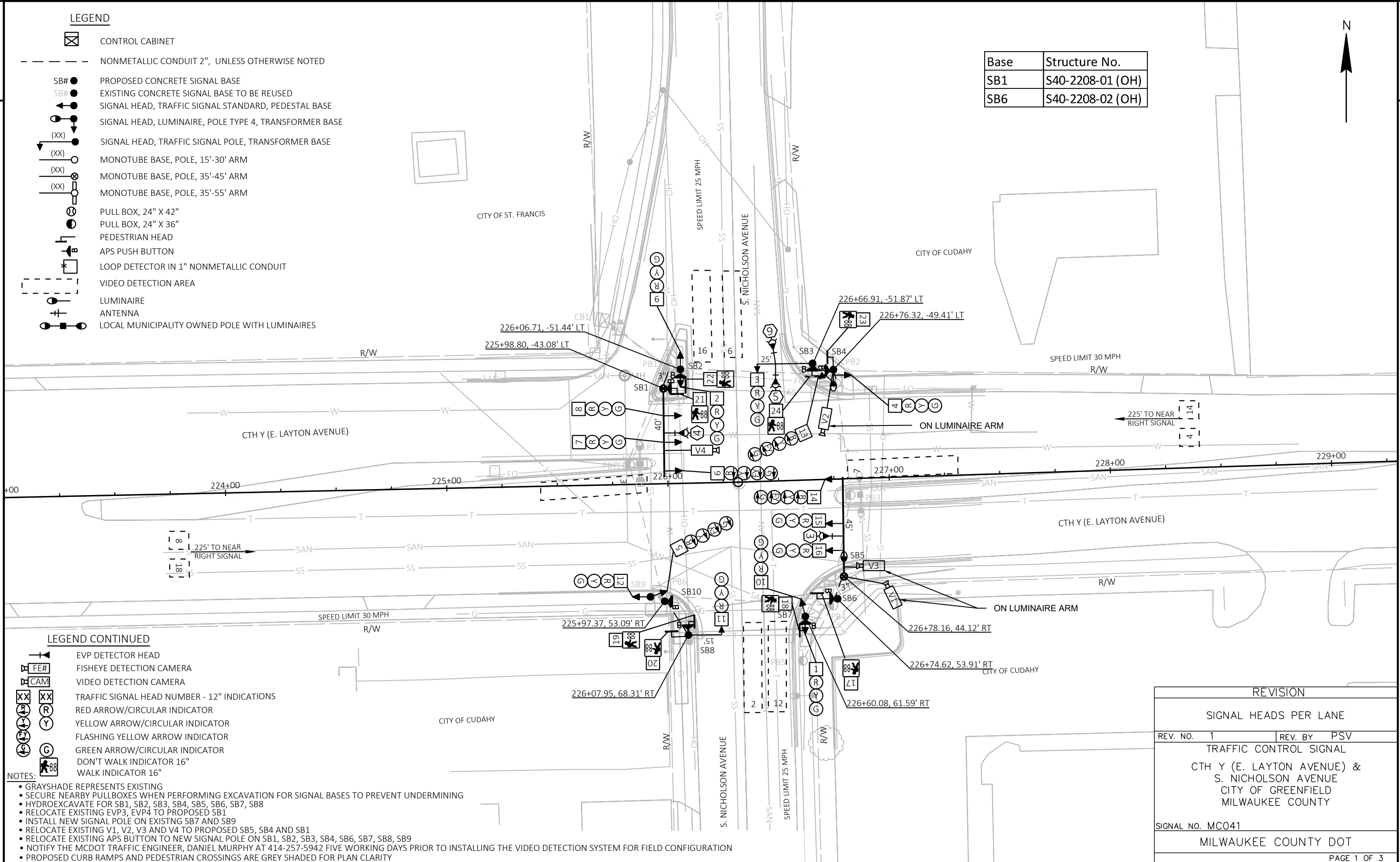
- NOTES:
- GRAYSHADE REPRESENTS EXISTING
 - SECURE NEARBY PULLBOXES WHEN PERFORMING EXCAVATION FOR SIGNAL BASES TO PREVENT UNDERMINING
 - HYDROEXCAVATE FOR SB5 AND SB12
 - RELOCATE EXISTING EVP3, EVP4 TO PROPOSED SB12 AND SB5 RESPECTIVELY
 - RELOCATE EXISTING V3 AND V4 TO PROPOSED SB12 AND SB5 RESPECTIVELY
 - INSTALL NEW TRAFFIC SIGNAL POLE ON EXISTING SB6 AND SB13
 - NOTIFY THE MCDOT TRAFFIC ENGINEER, DANIEL MURPHY AT 414-257-5942 FIVE WORKING DAYS PRIOR TO INSTALLING THE VIDEO DETECTION SYSTEM FOR FIELD CONFIGURATION

REVISION	
SIGNAL HEADS PER LANE	
REV. NO. 1	REV. BY PSV
TRAFFIC CONTROL SIGNAL CTH Y (W. LAYTON AVENUE) & S. 68TH STREET CITY OF GREENFIELD MILWAUKEE COUNTY	
SIGNAL NO. MC034	
MILWAUKEE COUNTY DOT	
PAGE 1 OF 3	

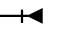


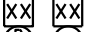





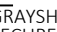
LEGEND

-  CONTROL CABINET
-  NONMETALLIC CONDUIT 2", UNLESS OTHERWISE NOTED
-  SB# ● PROPOSED CONCRETE SIGNAL BASE
-  SB# ● EXISTING CONCRETE SIGNAL BASE TO BE REUSED
-  SIGNAL HEAD, TRAFFIC SIGNAL STANDARD, PEDESTAL BASE
-  SIGNAL HEAD, LUMINAIRE, POLE TYPE 4, TRANSFORMER BASE
-  (XX) SIGNAL HEAD, TRAFFIC SIGNAL POLE, TRANSFORMER BASE
-  (XX) MONOTUBE BASE, POLE, 15'-30' ARM
-  (XX) MONOTUBE BASE, POLE, 35'-45' ARM
-  (XX) MONOTUBE BASE, POLE, 35'-55' ARM
-  PULL BOX, 24" X 42"
-  PULL BOX, 24" X 36"
-  PEDESTRIAN HEAD
-  APS PUSH BUTTON
-  LOOP DETECTOR IN 1" NONMETALLIC CONDUIT
-  VIDEO DETECTION AREA
-  LUMINAIRE
-  ANTENNA
-  LOCAL MUNICIPALITY OWNED POLE WITH LUMINAIRES

Base	Structure No.
SB1	S40-2208-01 (OH)
SB6	S40-2208-02 (OH)

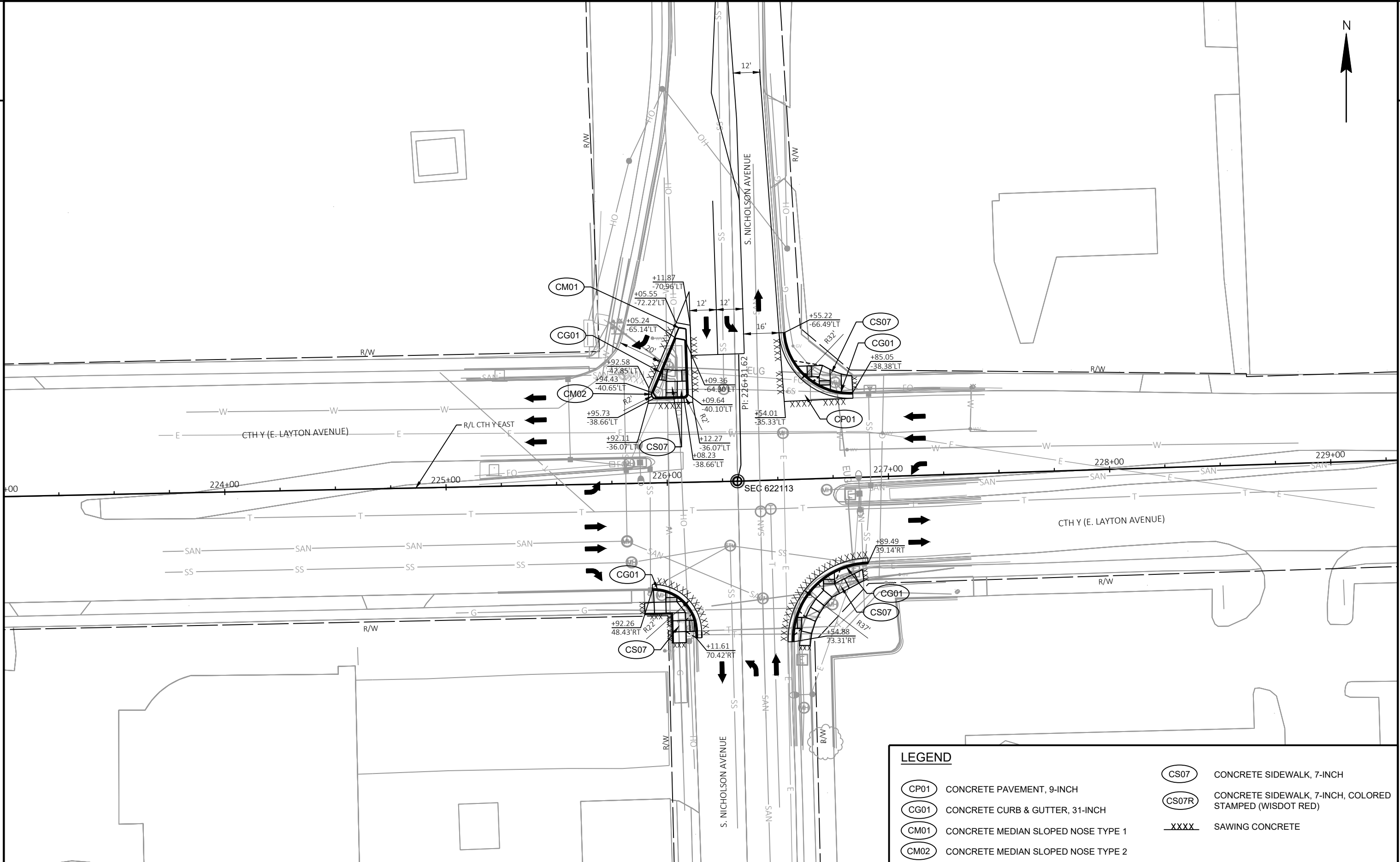


LEGEND CONTINUED

-  EVP DETECTOR HEAD
-  FE# FISHEYE DETECTION CAMERA
-  CAM VIDEO DETECTION CAMERA
-  (XX) TRAFFIC SIGNAL HEAD NUMBER - 12" INDICATIONS
-  (R) RED ARROW/CIRCULAR INDICATOR
-  (Y) YELLOW ARROW/CIRCULAR INDICATOR
-  (A) FLASHING YELLOW ARROW INDICATOR
-  (G) GREEN ARROW/CIRCULAR INDICATOR
-  (W) DON'T WALK INDICATOR 16"
-  (W) WALK INDICATOR 16"

- NOTES:
- GRAYSHADE REPRESENTS EXISTING
 - SECURE NEARBY PULLBOXES WHEN PERFORMING EXCAVATION FOR SIGNAL BASES TO PREVENT UNDERMINING
 - HYDROEXCAVATE FOR SB1, SB2, SB3, SB4, SB5, SB6, SB7, SB8
 - RELOCATE EXISTING EVP3, EVP4 TO PROPOSED SB1
 - INSTALL NEW SIGNAL POLE ON EXISTING SB7 AND SB9
 - RELOCATE EXISTING V1, V2, V3 AND V4 TO PROPOSED SB5, SB4 AND SB1
 - RELOCATE EXISTING APS BUTTON TO NEW SIGNAL POLE ON SB1, SB2, SB3, SB4, SB6, SB7, SB8, SB9
 - NOTIFY THE MCDOT TRAFFIC ENGINEER, DANIEL MURPHY AT 414-257-5942 FIVE WORKING DAYS PRIOR TO INSTALLING THE VIDEO DETECTION SYSTEM FOR FIELD CONFIGURATION
 - PROPOSED CURB RAMPS AND PEDESTRIAN CROSSINGS ARE GREY SHADED FOR PLAN CLARITY

REVISION	
SIGNAL HEADS PER LANE	
REV. NO. 1	REV. BY PSV
TRAFFIC CONTROL SIGNAL CTH Y (E. LAYTON AVENUE) & S. NICHOLSON AVENUE CITY OF GREENFIELD MILWAUKEE COUNTY	
SIGNAL NO. MC041	
MILWAUKEE COUNTY DOT	
PAGE 1 OF 3	



LEGEND	
	CONCRETE PAVEMENT, 9-INCH
	CONCRETE CURB & GUTTER, 31-INCH
	CONCRETE MEDIAN SLOPED NOSE TYPE 1
	CONCRETE MEDIAN SLOPED NOSE TYPE 2
	CONCRETE SIDEWALK, 7-INCH
	CONCRETE SIDEWALK, 7-INCH, COLORED STAMPED (WISDOT RED)
	SAWING CONCRETE