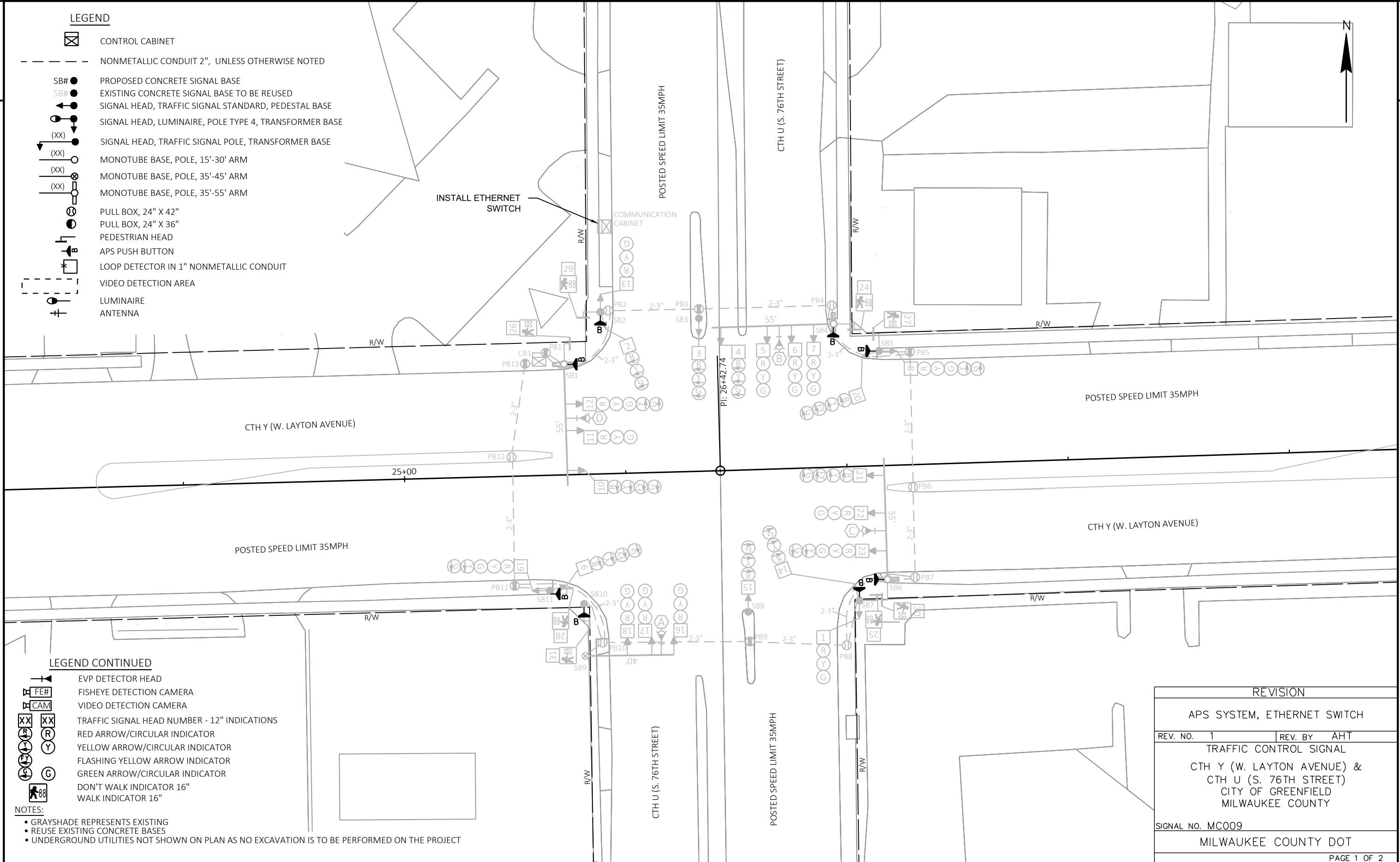


LEGEND

- CONTROL CABINET
- NONMETALLIC CONDUIT 2", UNLESS OTHERWISE NOTED
- SB# PROPOSED CONCRETE SIGNAL BASE
- SB# EXISTING CONCRETE SIGNAL BASE TO BE REUSED
- SIGNAL HEAD, TRAFFIC SIGNAL STANDARD, PEDESTAL BASE
- SIGNAL HEAD, LUMINAIRE, POLE TYPE 4, TRANSFORMER BASE
- (XX) SIGNAL HEAD, TRAFFIC SIGNAL POLE, TRANSFORMER BASE
- (XX) MONOTUBE BASE, POLE, 15'-30' ARM
- (XX) MONOTUBE BASE, POLE, 35'-45' ARM
- (XX) MONOTUBE BASE, POLE, 35'-55' ARM
- PULL BOX, 24" X 42"
- PULL BOX, 24" X 36"
- PEDESTRIAN HEAD
- APS PUSH BUTTON
- LOOP DETECTOR IN 1" NONMETALLIC CONDUIT
- VIDEO DETECTION AREA
- LUMINAIRE
- ANTENNA



INSTALL ETHERNET SWITCH

COMMUNICATION CABINET

LEGEND CONTINUED

- EVP DETECTOR HEAD
- FE# FISHEYE DETECTION CAMERA
- CAM VIDEO DETECTION CAMERA
- (XX) TRAFFIC SIGNAL HEAD NUMBER - 12" INDICATIONS
- (R) RED ARROW/CIRCULAR INDICATOR
- (Y) YELLOW ARROW/CIRCULAR INDICATOR
- (F) FLASHING YELLOW ARROW INDICATOR
- (G) GREEN ARROW/CIRCULAR INDICATOR
- (88) DON'T WALK INDICATOR 16"
- (88) WALK INDICATOR 16"

- NOTES:
- GRAYSHADE REPRESENTS EXISTING
 - REUSE EXISTING CONCRETE BASES
 - UNDERGROUND UTILITIES NOT SHOWN ON PLAN AS NO EXCAVATION IS TO BE PERFORMED ON THE PROJECT

REVISION	
APS SYSTEM, ETHERNET SWITCH	
REV. NO. 1	REV. BY AHT
TRAFFIC CONTROL SIGNAL	
CTH Y (W. LAYTON AVENUE) & CTH U (S. 76TH STREET) CITY OF GREENFIELD MILWAUKEE COUNTY	
SIGNAL NO. MC009	
MILWAUKEE COUNTY DOT	
PAGE 1 OF 2	



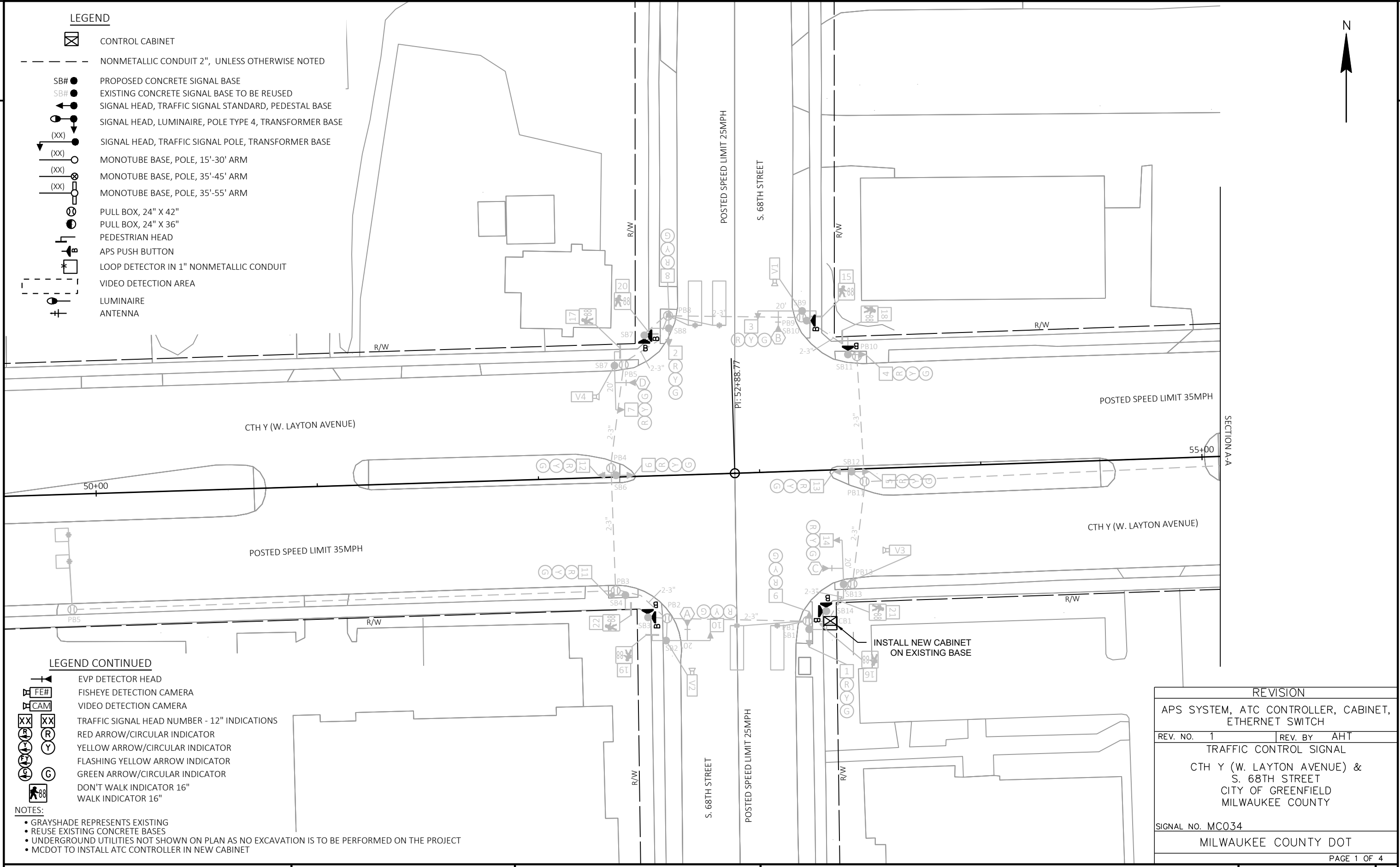
LEGEND

- CONTROL CABINET
- NONMETALLIC CONDUIT 2", UNLESS OTHERWISE NOTED
- PROPOSED CONCRETE SIGNAL BASE
- EXISTING CONCRETE SIGNAL BASE TO BE REUSED
- SIGNAL HEAD, TRAFFIC SIGNAL STANDARD, PEDESTAL BASE
- SIGNAL HEAD, LUMINAIRE, POLE TYPE 4, TRANSFORMER BASE
- SIGNAL HEAD, TRAFFIC SIGNAL POLE, TRANSFORMER BASE
- MONOTUBE BASE, POLE, 15'-30' ARM
- MONOTUBE BASE, POLE, 35'-45' ARM
- MONOTUBE BASE, POLE, 35'-55' ARM
- PULL BOX, 24" X 42"
- PULL BOX, 24" X 36"
- PEDESTRIAN HEAD
- APS PUSH BUTTON
- LOOP DETECTOR IN 1" NONMETALLIC CONDUIT
- VIDEO DETECTION AREA
- LUMINAIRE
- ANTENNA

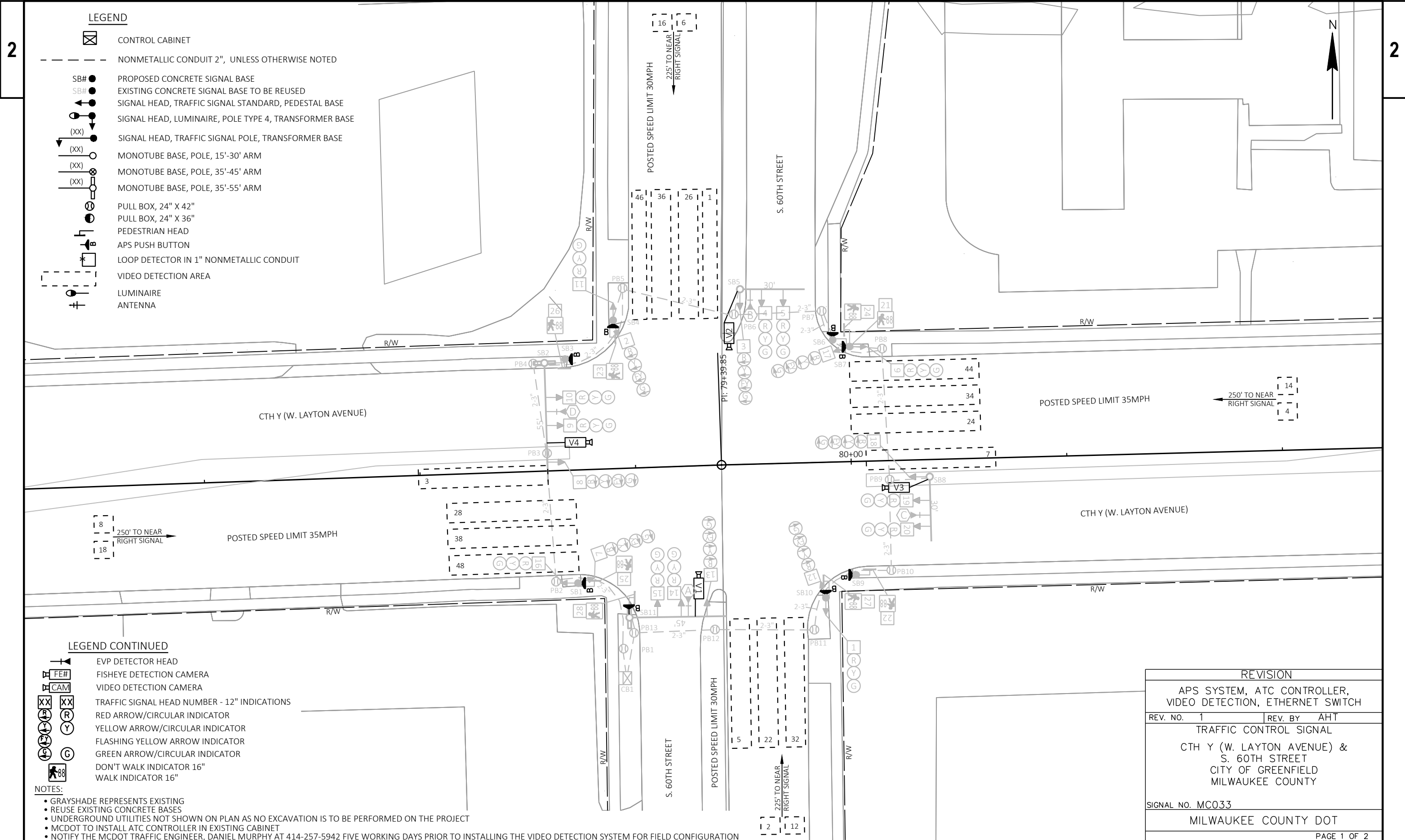
LEGEND CONTINUED

- EVP DETECTOR HEAD
- FISHEYE DETECTION CAMERA
- VIDEO DETECTION CAMERA
- TRAFFIC SIGNAL HEAD NUMBER - 12" INDICATIONS
- RED ARROW/CIRCULAR INDICATOR
- YELLOW ARROW/CIRCULAR INDICATOR
- FLASHING YELLOW ARROW INDICATOR
- GREEN ARROW/CIRCULAR INDICATOR
- DON'T WALK INDICATOR 16"
- WALK INDICATOR 16"

- NOTES:
- GRAYSHADE REPRESENTS EXISTING
 - REUSE EXISTING CONCRETE BASES
 - UNDERGROUND UTILITIES NOT SHOWN ON PLAN AS NO EXCAVATION IS TO BE PERFORMED ON THE PROJECT
 - MCDOT TO INSTALL ATC CONTROLLER IN NEW CABINET



REVISION	
APS SYSTEM, ATC CONTROLLER, CABINET, ETHERNET SWITCH	
REV. NO. 1	REV. BY AHT
TRAFFIC CONTROL SIGNAL	
CTH Y (W. LAYTON AVENUE) & S. 68TH STREET	
CITY OF GREENFIELD MILWAUKEE COUNTY	
SIGNAL NO. MC034	
MILWAUKEE COUNTY DOT	
PAGE 1 OF 4	



LEGEND

- CONTROL CABINET
- NONMETALLIC CONDUIT 2", UNLESS OTHERWISE NOTED
- PROPOSED CONCRETE SIGNAL BASE
- EXISTING CONCRETE SIGNAL BASE TO BE REUSED
- SIGNAL HEAD, TRAFFIC SIGNAL STANDARD, PEDESTAL BASE
- SIGNAL HEAD, LUMINAIRE, POLE TYPE 4, TRANSFORMER BASE
- SIGNAL HEAD, TRAFFIC SIGNAL POLE, TRANSFORMER BASE
- MONOTUBE BASE, POLE, 15'-30' ARM
- MONOTUBE BASE, POLE, 35'-45' ARM
- MONOTUBE BASE, POLE, 35'-55' ARM
- PULL BOX, 24" X 42"
- PULL BOX, 24" X 36"
- PEDESTRIAN HEAD
- APS PUSH BUTTON
- LOOP DETECTOR IN 1" NONMETALLIC CONDUIT
- VIDEO DETECTION AREA
- LUMINAIRE
- ANTENNA

LEGEND CONTINUED

- EVP DETECTOR HEAD
- FISHEYE DETECTION CAMERA
- VIDEO DETECTION CAMERA
- TRAFFIC SIGNAL HEAD NUMBER - 12" INDICATIONS
- RED ARROW/CIRCULAR INDICATOR
- YELLOW ARROW/CIRCULAR INDICATOR
- FLASHING YELLOW ARROW INDICATOR
- GREEN ARROW/CIRCULAR INDICATOR
- DON'T WALK INDICATOR 16"
- WALK INDICATOR 16"

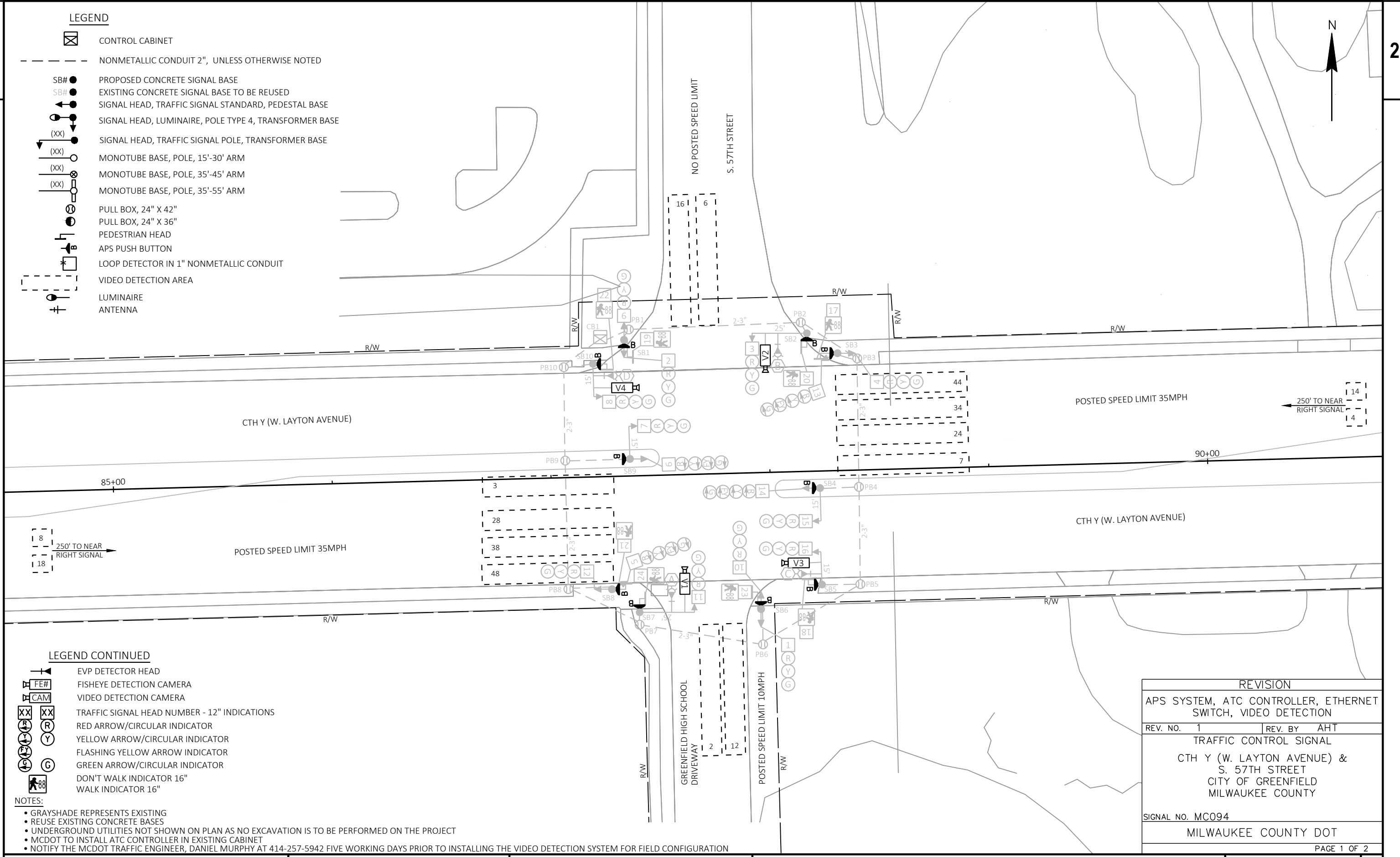
NOTES:

- GRAYSHADE REPRESENTS EXISTING
- REUSE EXISTING CONCRETE BASES
- UNDERGROUND UTILITIES NOT SHOWN ON PLAN AS NO EXCAVATION IS TO BE PERFORMED ON THE PROJECT
- MCDOT TO INSTALL ATC CONTROLLER IN EXISTING CABINET
- NOTIFY THE MCDOT TRAFFIC ENGINEER, DANIEL MURPHY AT 414-257-5942 FIVE WORKING DAYS PRIOR TO INSTALLING THE VIDEO DETECTION SYSTEM FOR FIELD CONFIGURATION

REVISION	
APS SYSTEM, ATC CONTROLLER, VIDEO DETECTION, ETHERNET SWITCH	
REV. NO. 1	REV. BY AHT
TRAFFIC CONTROL SIGNAL	
CTH Y (W. LAYTON AVENUE) & S. 60TH STREET	
CITY OF GREENFIELD MILWAUKEE COUNTY	
SIGNAL NO. MC033	
MILWAUKEE COUNTY DOT	
PAGE 1 OF 2	

LEGEND

- CONTROL CABINET
- NONMETALLIC CONDUIT 2", UNLESS OTHERWISE NOTED
- PROPOSED CONCRETE SIGNAL BASE
- EXISTING CONCRETE SIGNAL BASE TO BE REUSED
- SIGNAL HEAD, TRAFFIC SIGNAL STANDARD, PEDESTAL BASE
- SIGNAL HEAD, LUMINAIRE, POLE TYPE 4, TRANSFORMER BASE
- SIGNAL HEAD, TRAFFIC SIGNAL POLE, TRANSFORMER BASE
- MONOTUBE BASE, POLE, 15'-30' ARM
- MONOTUBE BASE, POLE, 35'-45' ARM
- MONOTUBE BASE, POLE, 35'-55' ARM
- PULL BOX, 24" X 42"
- PULL BOX, 24" X 36"
- PEDESTRIAN HEAD
- APS PUSH BUTTON
- LOOP DETECTOR IN 1" NONMETALLIC CONDUIT
- VIDEO DETECTION AREA
- LUMINAIRE
- ANTENNA



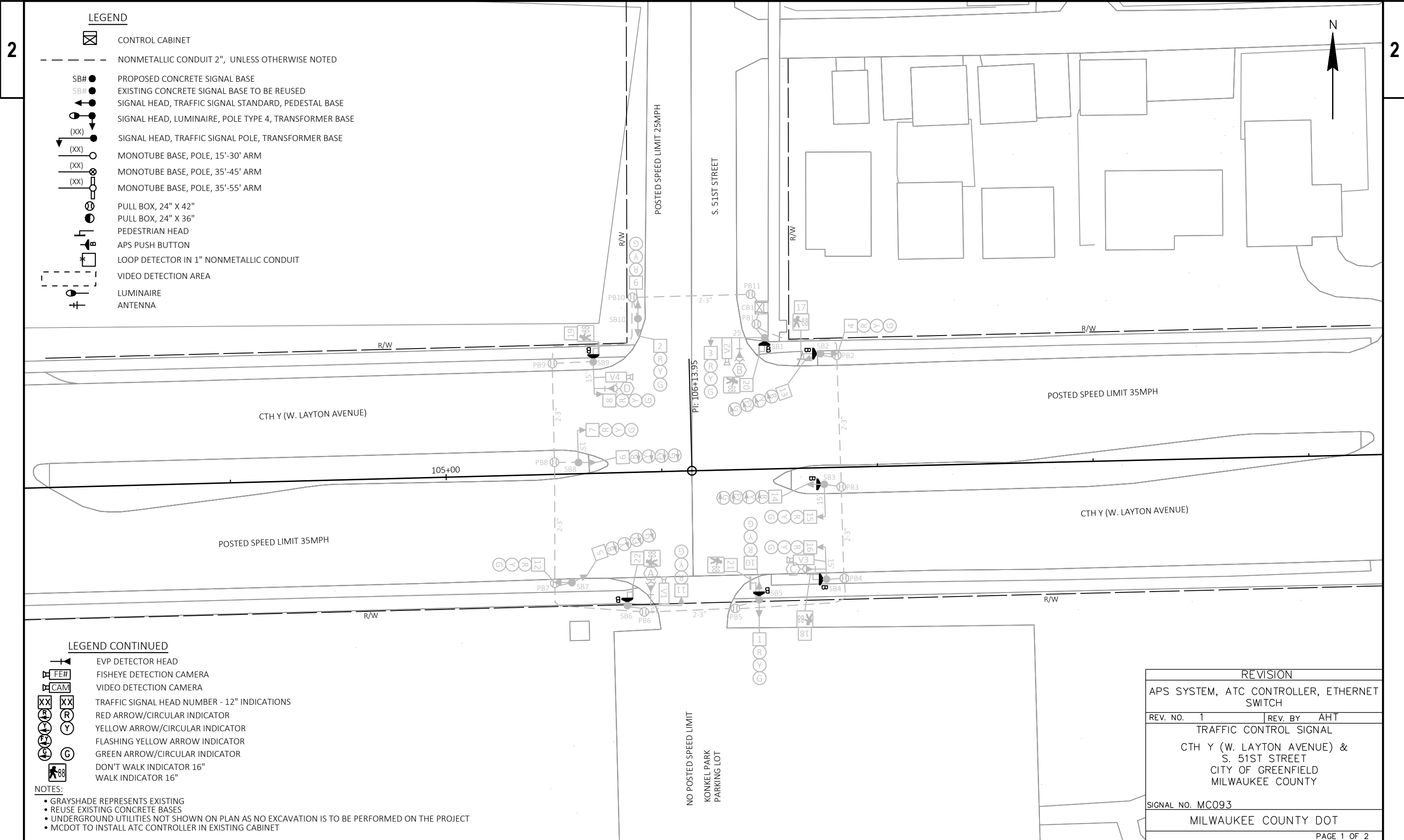
LEGEND CONTINUED

- EVP DETECTOR HEAD
- FISHEYE DETECTION CAMERA
- VIDEO DETECTION CAMERA
- TRAFFIC SIGNAL HEAD NUMBER - 12" INDICATIONS
- RED ARROW/CIRCULAR INDICATOR
- YELLOW ARROW/CIRCULAR INDICATOR
- FLASHING YELLOW ARROW INDICATOR
- GREEN ARROW/CIRCULAR INDICATOR
- DON'T WALK INDICATOR 16"
- WALK INDICATOR 16"

NOTES:

- GRAYSHADE REPRESENTS EXISTING
- REUSE EXISTING CONCRETE BASES
- UNDERGROUND UTILITIES NOT SHOWN ON PLAN AS NO EXCAVATION IS TO BE PERFORMED ON THE PROJECT
- MCDOT TO INSTALL ATC CONTROLLER IN EXISTING CABINET
- NOTIFY THE MCDOT TRAFFIC ENGINEER, DANIEL MURPHY AT 414-257-5942 FIVE WORKING DAYS PRIOR TO INSTALLING THE VIDEO DETECTION SYSTEM FOR FIELD CONFIGURATION

REVISION	
APS SYSTEM, ATC CONTROLLER, ETHERNET SWITCH, VIDEO DETECTION	
REV. NO. 1	REV. BY AHT
TRAFFIC CONTROL SIGNAL	
CTH Y (W. LAYTON AVENUE) & S. 57TH STREET	
CITY OF GREENFIELD MILWAUKEE COUNTY	
SIGNAL NO. MC094	
MILWAUKEE COUNTY DOT	
PAGE 1 OF 2	



LEGEND

- CONTROL CABINET
- NONMETALLIC CONDUIT 2", UNLESS OTHERWISE NOTED
- PROPOSED CONCRETE SIGNAL BASE
- EXISTING CONCRETE SIGNAL BASE TO BE REUSED
- SIGNAL HEAD, TRAFFIC SIGNAL STANDARD, PEDESTAL BASE
- SIGNAL HEAD, LUMINAIRE, POLE TYPE 4, TRANSFORMER BASE
- SIGNAL HEAD, TRAFFIC SIGNAL POLE, TRANSFORMER BASE
- MONOTUBE BASE, POLE, 15'-30' ARM
- MONOTUBE BASE, POLE, 35'-45' ARM
- MONOTUBE BASE, POLE, 35'-55' ARM
- PULL BOX, 24" X 42"
- PULL BOX, 24" X 36"
- PEDESTRIAN HEAD
- APS PUSH BUTTON
- LOOP DETECTOR IN 1" NONMETALLIC CONDUIT
- VIDEO DETECTION AREA
- LUMINAIRE
- ANTENNA


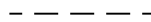




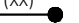
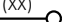







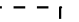
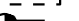
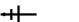
LEGEND CONTINUED

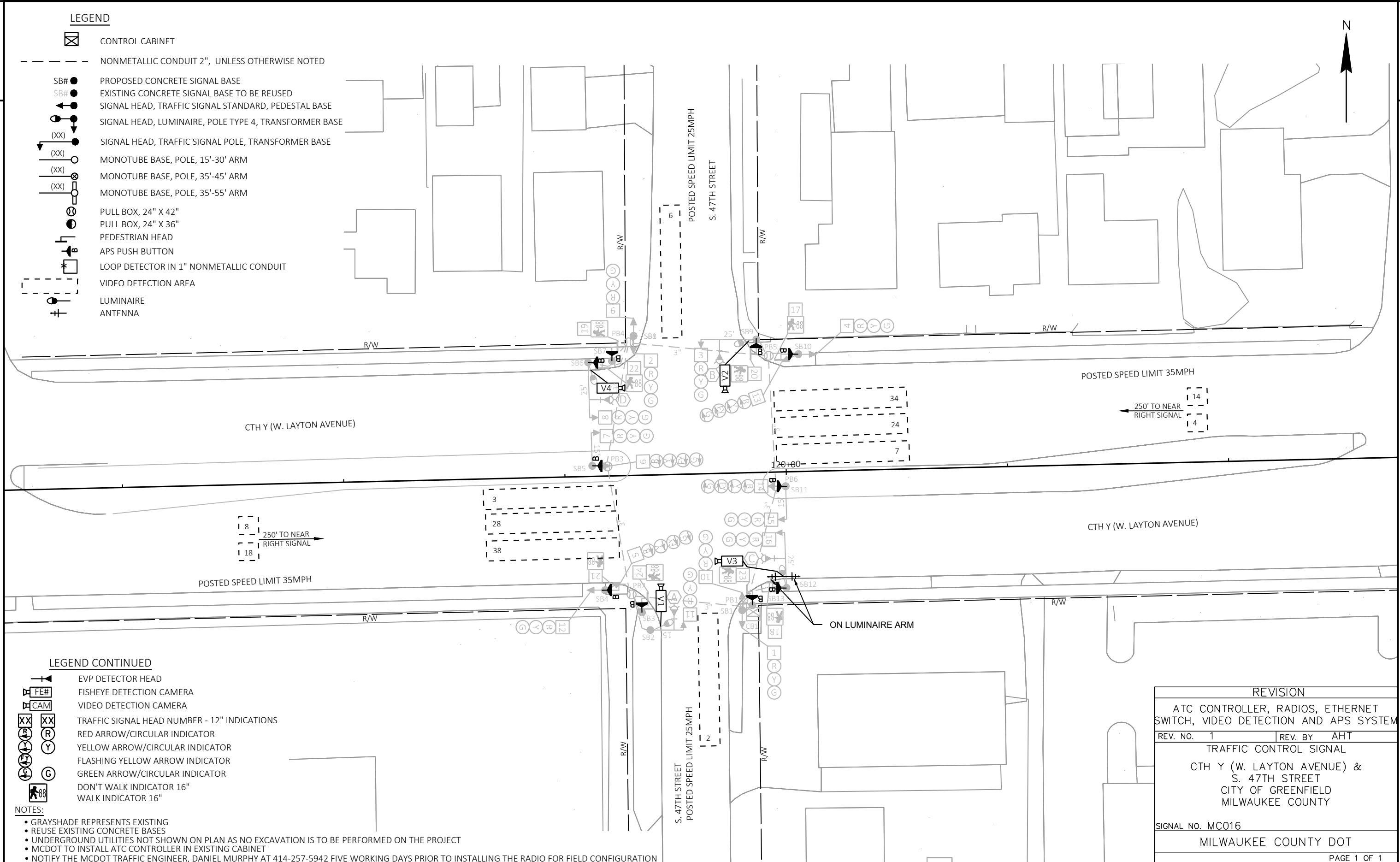
- EVP DETECTOR HEAD
- FISHEYE DETECTION CAMERA
- VIDEO DETECTION CAMERA
- TRAFFIC SIGNAL HEAD NUMBER - 12" INDICATIONS
- RED ARROW/CIRCULAR INDICATOR
- YELLOW ARROW/CIRCULAR INDICATOR
- FLASHING YELLOW ARROW INDICATOR
- GREEN ARROW/CIRCULAR INDICATOR
- DON'T WALK INDICATOR 16"
- WALK INDICATOR 16"

- NOTES:**
- GRAYSHADE REPRESENTS EXISTING
 - REUSE EXISTING CONCRETE BASES
 - UNDERGROUND UTILITIES NOT SHOWN ON PLAN AS NO EXCAVATION IS TO BE PERFORMED ON THE PROJECT
 - MCDOT TO INSTALL ATC CONTROLLER IN EXISTING CABINET


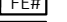
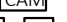
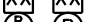




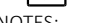

REVISION	
APS SYSTEM, ATC CONTROLLER, ETHERNET SWITCH	
REV. NO. 1	REV. BY AHT
TRAFFIC CONTROL SIGNAL	
CTH Y (W. LAYTON AVENUE) & S. 51ST STREET CITY OF GREENFIELD MILWAUKEE COUNTY	
SIGNAL NO. MC093	
MILWAUKEE COUNTY DOT	
PAGE 1 OF 2	

LEGEND

-  CONTROL CABINET
-  NONMETALLIC CONDUIT 2", UNLESS OTHERWISE NOTED
-  PROPOSED CONCRETE SIGNAL BASE
-  EXISTING CONCRETE SIGNAL BASE TO BE REUSED
-  SIGNAL HEAD, TRAFFIC SIGNAL STANDARD, PEDESTAL BASE
-  SIGNAL HEAD, LUMINAIRE, POLE TYPE 4, TRANSFORMER BASE
-  SIGNAL HEAD, TRAFFIC SIGNAL POLE, TRANSFORMER BASE
-  MONOTUBE BASE, POLE, 15'-30' ARM
-  MONOTUBE BASE, POLE, 35'-45' ARM
-  MONOTUBE BASE, POLE, 35'-55' ARM
-  PULL BOX, 24" X 42"
-  PULL BOX, 24" X 36"
-  PEDESTRIAN HEAD
-  APS PUSH BUTTON
-  LOOP DETECTOR IN 1" NONMETALLIC CONDUIT
-  VIDEO DETECTION AREA
-  LUMINAIRE
-  ANTENNA



LEGEND CONTINUED

-  EVP DETECTOR HEAD
-  FISHEYE DETECTION CAMERA
-  VIDEO DETECTION CAMERA
-  TRAFFIC SIGNAL HEAD NUMBER - 12" INDICATIONS
-  RED ARROW/CIRCULAR INDICATOR
-  YELLOW ARROW/CIRCULAR INDICATOR
-  FLASHING YELLOW ARROW INDICATOR
-  GREEN ARROW/CIRCULAR INDICATOR
-  DON'T WALK INDICATOR 16"
-  WALK INDICATOR 16"

- NOTES:
- GRAYSHADE REPRESENTS EXISTING
 - REUSE EXISTING CONCRETE BASES
 - UNDERGROUND UTILITIES NOT SHOWN ON PLAN AS NO EXCAVATION IS TO BE PERFORMED ON THE PROJECT
 - MCDOT TO INSTALL ATC CONTROLLER IN EXISTING CABINET
 - NOTIFY THE MCDOT TRAFFIC ENGINEER, DANIEL MURPHY AT 414-257-5942 FIVE WORKING DAYS PRIOR TO INSTALLING THE RADIO FOR FIELD CONFIGURATION

REVISION	
ATC CONTROLLER, RADIOS, ETHERNET SWITCH, VIDEO DETECTION AND APS SYSTEM	
REV. NO. 1	REV. BY AHT
TRAFFIC CONTROL SIGNAL	
CTH Y (W. LAYTON AVENUE) & S. 47TH STREET	
CITY OF GREENFIELD	
MILWAUKEE COUNTY	
SIGNAL NO. MC016	
MILWAUKEE COUNTY DOT	
PAGE 1 OF 1	