

LEGEND

SB DETOUR 


CONSTRUCTION ZONE (ROAD/BRIDGE CLOSED) 


C MILWAUKEE - E MASON ST
 OVER LINCOLN MEMORIAL DR B-40-0524
 MILWAUKEE COUNTY
 STATE PROJECT NUMBER:
 2984-15-78

JOHN MARIANI PROJECT ENGINEER CELL: 414-300-7864 JOHN.MARIANI@STRAND.COM	PHIL CIHA WISDOT PROJECT MANAGER PHONE: 414-750-1951 PHILIP.CIHA@DOT.WI.GOV
---	--



LEGEND

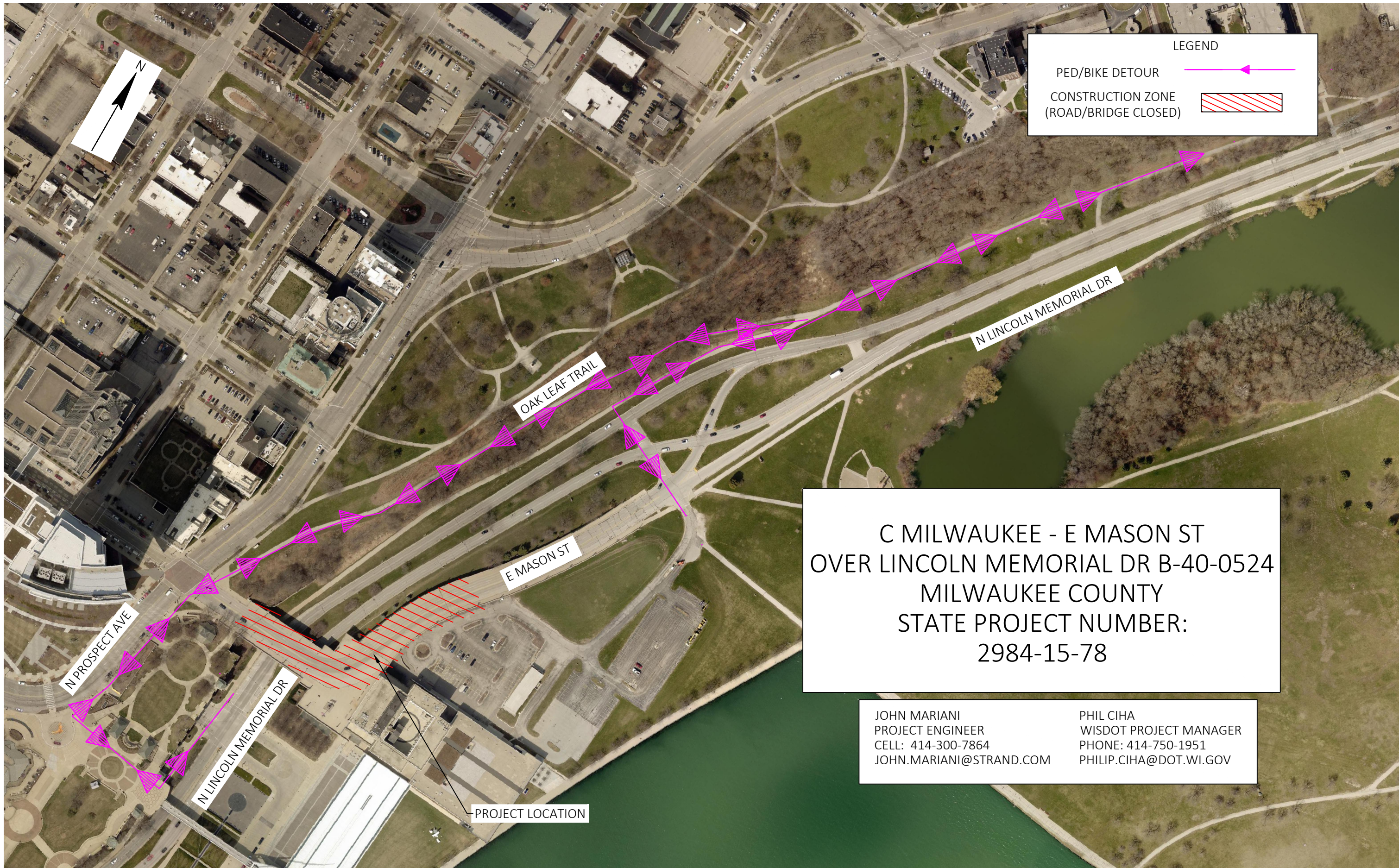
NB DETOUR 

CONSTRUCTION ZONE (ROAD/BRIDGE CLOSED) 


C MILWAUKEE - E MASON ST
 OVER LINCOLN MEMORIAL DR B-40-0524
 MILWAUKEE COUNTY
 STATE PROJECT NUMBER:
 2984-15-78


JOHN MARIANI PROJECT ENGINEER CELL: 414-300-7864 JOHN.MARIANI@STRAND.COM	PHIL CIHA WISDOT PROJECT MANAGER PHONE: 414-750-1951 PHILIP.CIHA@DOT.WI.GOV
---	--

PROJECT LOCATION



LEGEND

PED/BIKE DETOUR 

CONSTRUCTION ZONE (ROAD/BRIDGE CLOSED) 

C MILWAUKEE - E MASON ST
 OVER LINCOLN MEMORIAL DR B-40-0524
 MILWAUKEE COUNTY
 STATE PROJECT NUMBER:
 2984-15-78

JOHN MARIANI PROJECT ENGINEER CELL: 414-300-7864 JOHN.MARIANI@STRAND.COM	PHIL CIHA WISDOT PROJECT MANAGER PHONE: 414-750-1951 PHILIP.CIHA@DOT.WI.GOV
---	--

PROJECT LOCATION