

13TH STREET CULVERT CROSSING

Milwaukee County, in partnership with the Wisconsin Department of Transportation (WisDOT) is underway with the 13th Street reconstruction project. The project stretches from Puetz Road to Drexel Avenue in the City of Oak Creek. The following work is scheduled to take place as part of the project.

Monday, July 29:

- > 13th Street is scheduled to return to a two-way traffic configuration.

Beginning, Thursday August 1:

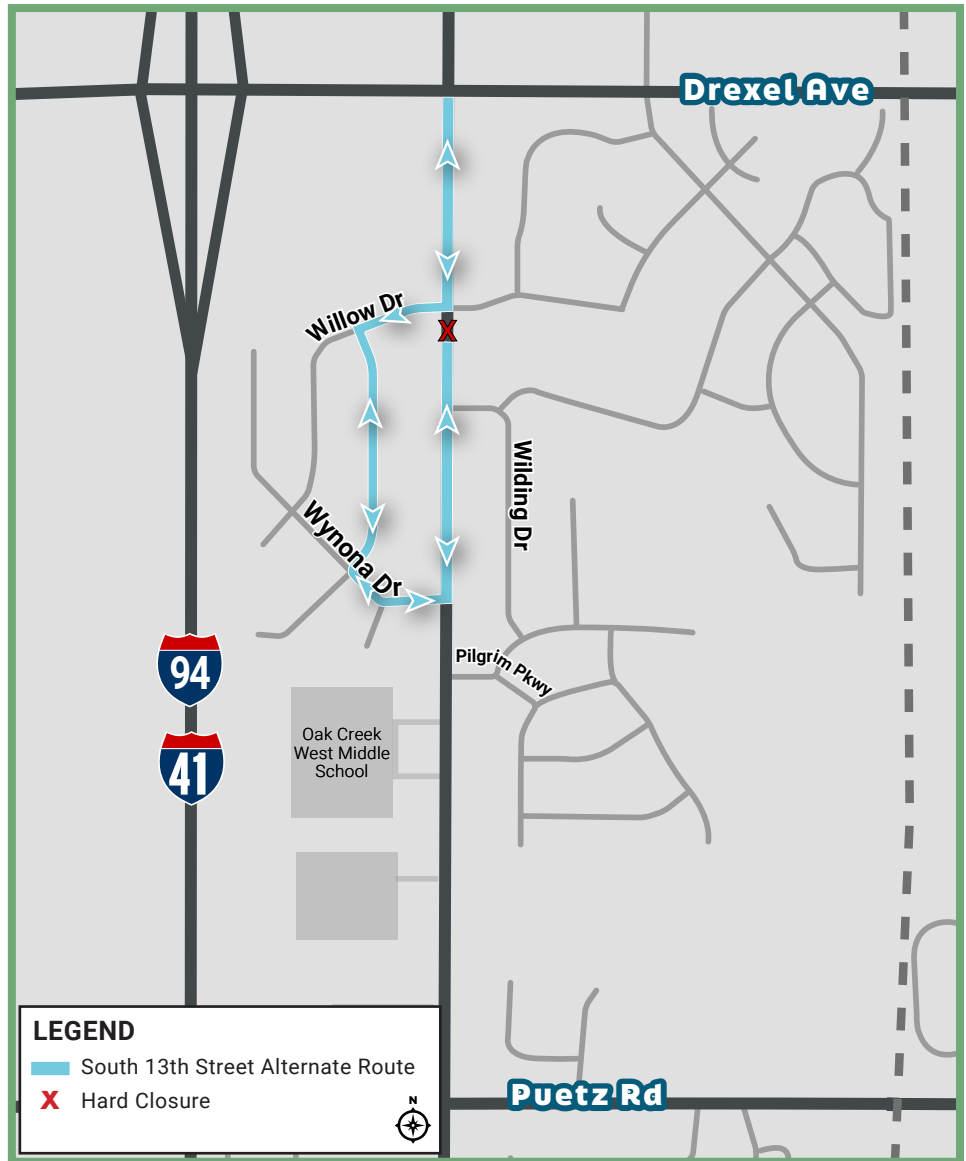
- > 13th Street just south of Willow Drive is scheduled to close for approximately three weeks beginning Thursday, August 1 by 5 a.m., while crews work to perform a culvert crossing.

Alternate Route:

- > Residents who live south of Willow Drive, should utilize Wynona Drive, Willow Drive, 13th Street and Puetz Road to get around the closure.
- > Residents who live north of Willow Drive, should utilize Drexel Avenue to get around the closure.

***Early start operations are scheduled to take place intermittently for the duration of this work.**

*** Please note that all work is weather dependent and is subject to change.**



STAY UP TO DATE!

For additional information, or if you would like to be added to the 13th Street distribution list to receive future project updates, please contact:

ATHENA KUHL

Public Involvement Specialist

(414) 215-0379

akuhl@kapurinc.com

LAUREN JUSTUS

Project Leader

(414) 651-4314

lauren.justus@milwaukeecountywi.gov

PROJECT WEBSITE

