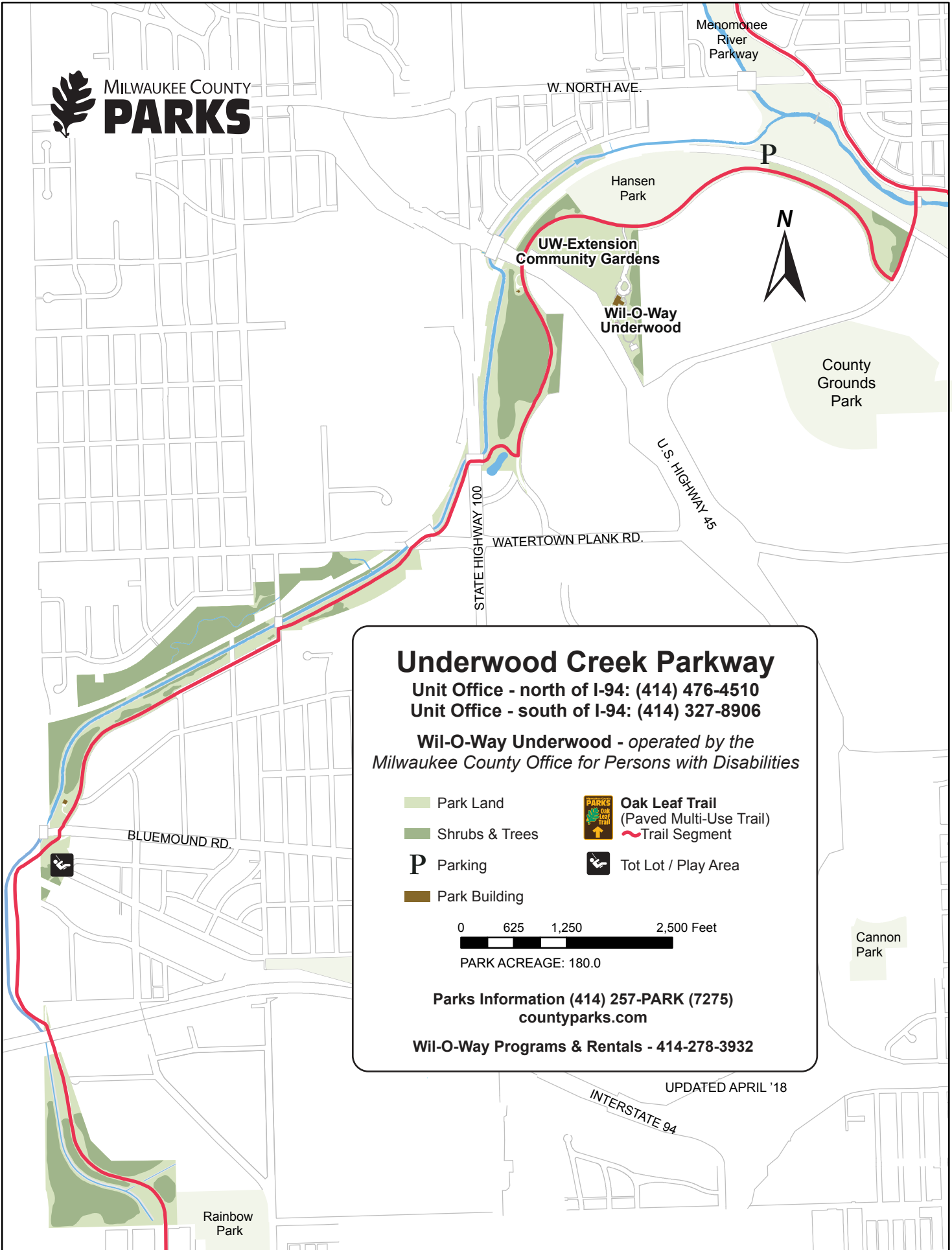




MILWAUKEE COUNTY  
**PARKS**




### Underwood Creek Parkway

Unit Office - north of I-94: (414) 476-4510

Unit Office - south of I-94: (414) 327-8906


*Wil-O-Way Underwood - operated by the Milwaukee County Office for Persons with Disabilities*


 Park Land

 Shrubs & Trees

**P** Parking

 Park Building

 **Oak Leaf Trail**  
(Paved Multi-Use Trail)

 Trail Segment

 Tot Lot / Play Area

0 625 1,250 2,500 Feet

PARK ACREAGE: 180.0

**Parks Information (414) 257-PARK (7275)**  
[countyparks.com](http://countyparks.com)

**Wil-O-Way Programs & Rentals - 414-278-3932**

UPDATED APRIL '18

INTERSTATE 94