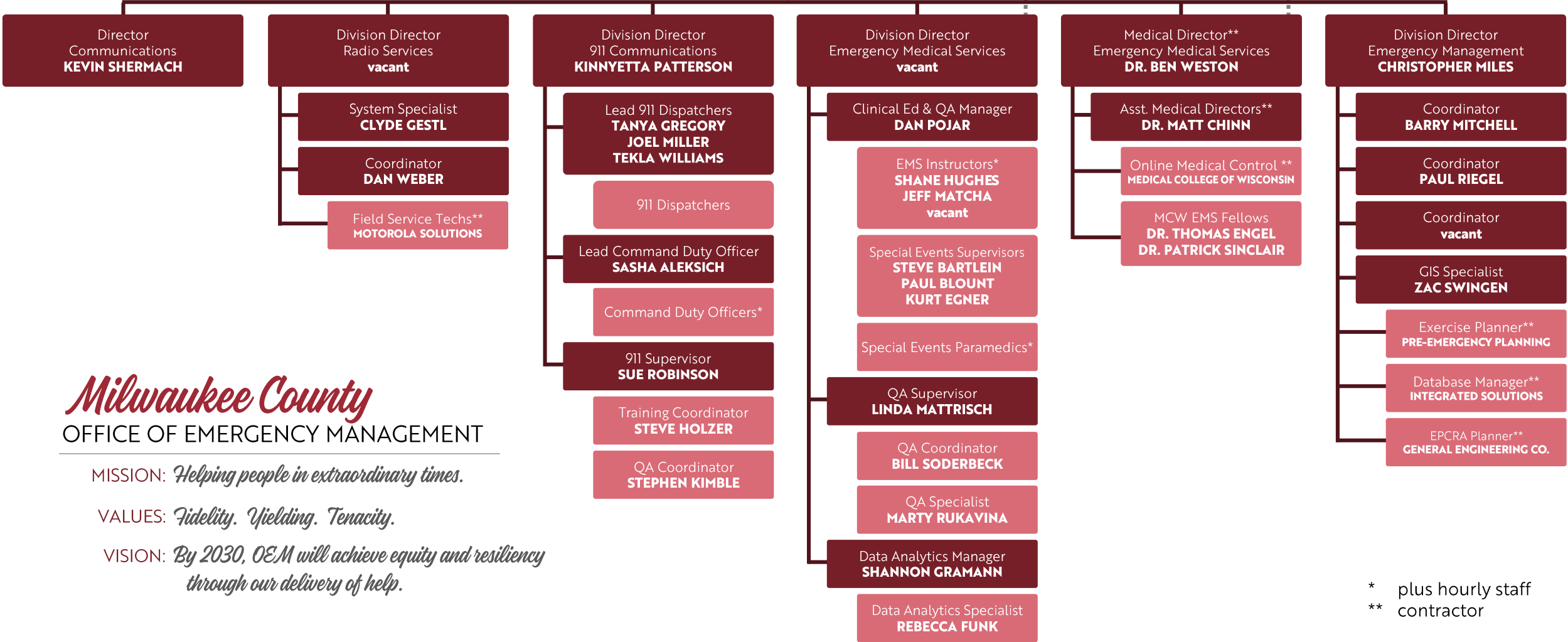




County Executive
CHRIS ABELE

OEM Director
CHRISTINE WESTRICH

MEDICAL COLLEGE OF WISCONSIN
Department of Emergency Medicine
Division of EMS Medicine



Milwaukee County

OFFICE OF EMERGENCY MANAGEMENT

MISSION: *Helping people in extraordinary times.*

VALUES: *Fidelity. Yielding. Tenacity.*

VISION: *By 2030, OEM will achieve equity and resiliency through our delivery of help.*

* plus hourly staff
** contractor