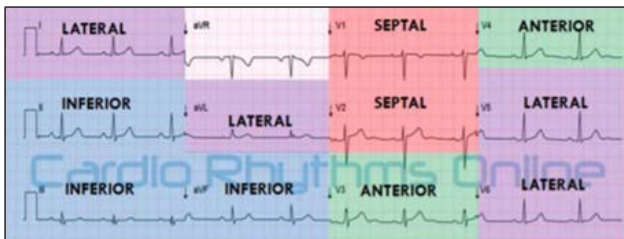
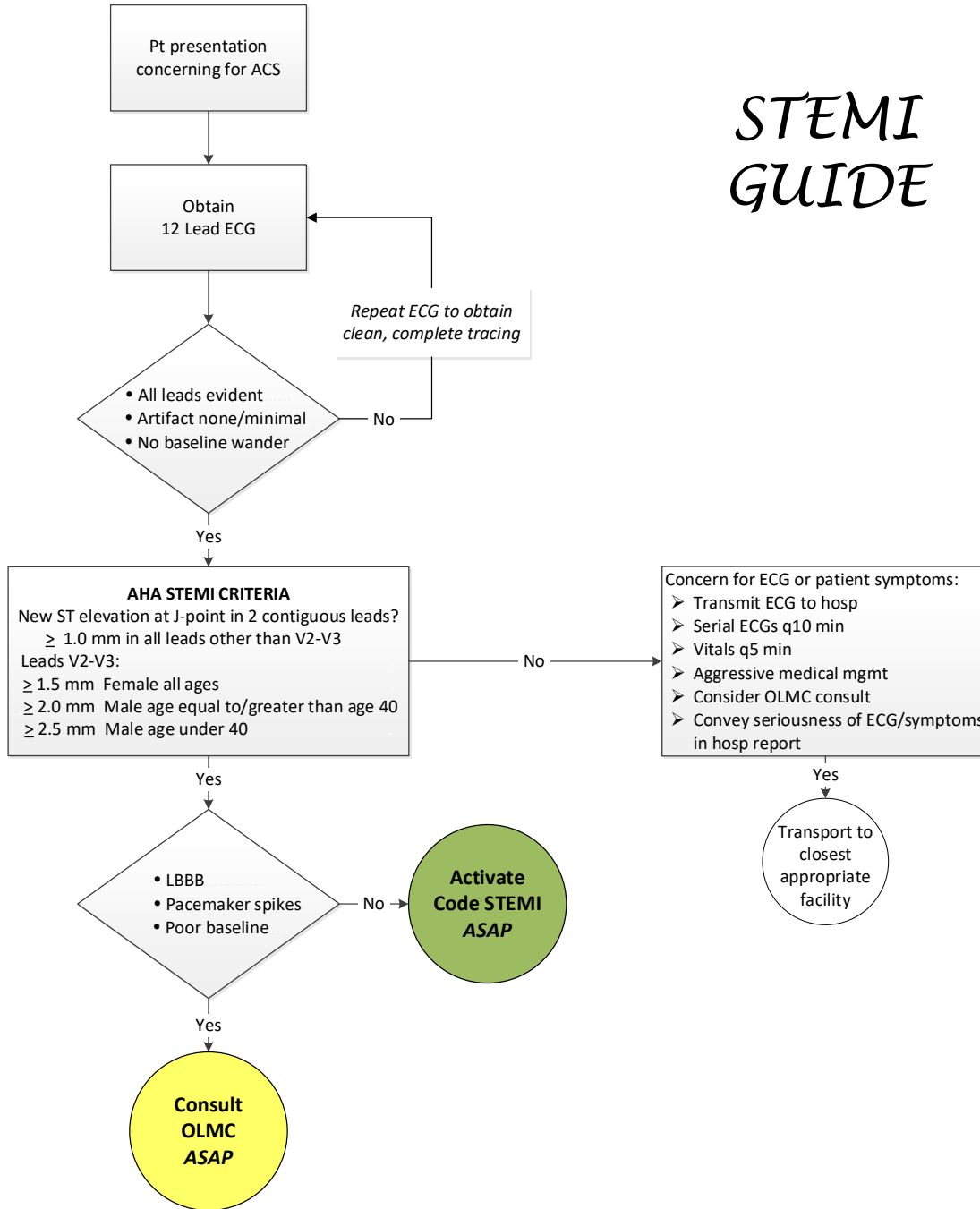




STEMI Guide



STEMI GUIDE



ST Elevation in 2 or more contiguous leads:

- | | | |
|----------------------|-------------------------|---------------------------------|
| Leads II, III, aVF | Inferior wall MI | vessel likely RCA or LCx |
| Leads I, aVL, V5, V6 | Lateral wall MI | vessel likely LCx or LAD branch |
| Leads V1, V2, V3, V4 | Septal/Anterior wall MI | vessel likely LAD |

ST depression may be present in reciprocal leads (opposite wall)