



# Defibrillation

EMT-Basic

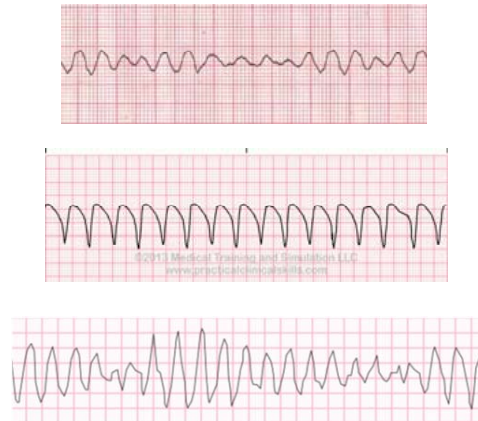
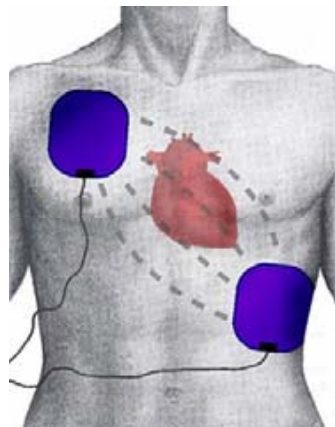
Advanced EMT

Paramedic

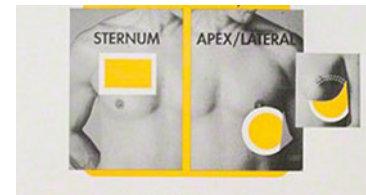
## PROCEDURE

- Assemble and check equipment and confirm high quality CPR is in progress
- Expose the patient's chest and remove any liquids, sweat, hair, or medication patches
- Apply defibrillation pads to patient's chest wall - Anterior-Lateral position is preferred
- Turn on monitor and analyze patient's rhythm. Confirm that rhythm is showing is v-fib or v-tach
- Push "select energy"(Medic) or "analyze" (EMT/AEMT) button on cardiac monitor and select appropriate amount of joules (typically 200J)
- Continue CPR while cardiac monitor is charging
- Ensure patient is clear immediately prior to pressing the shock button
- Shock patient- immediately resume high quality CPR

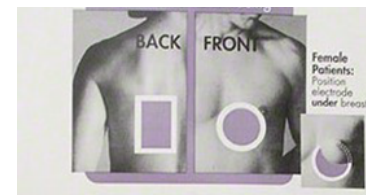
## REFERENCE GRAPHICS



### Anterior Lateral



### Anterior Posterior



## KEY POINTS

- Do not apply defibrillator pads over a pacemaker or automatic implanted cardiac defibrillator (AICD)
- If patient is in refractory VF or VT, change pad orientation to change shock vector per protocol
- Pre and post-shock pauses should not be more than 10 seconds