



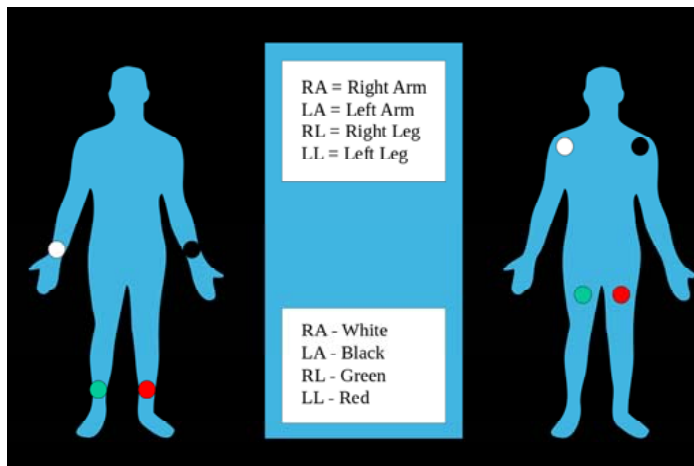
# 4-Lead EKG

Paramedic

## PROCEDURE

- Loosen/remove clothing for electrode placement
- Dry chest if necessary
- Clip/shave excessive body hair to ensure adhesion of the electrodes and/or pads
- Snap leads on to each electrode
- Peel off the protective backing from electrode
- Apply adhesive side of the electrode to patient
- Apply limb leads as follows:
  - Right arm (white)
  - Left arm (black)
  - Right Leg (green)
  - Left leg (red)
- Ensure ECG cable is not pulling on individual electrodes
- Ensure ECG cable is connected to monitor
- Turn on monitor
- Print a 6 inch copy of the waveform to accompany patient to hospital
- Disconnect cables from the electrodes
- Turn off the monitor

## REFERENCE GRAPHICS



## KEY POINTS

- Lead II is the standard lead used to monitor the patient's ECG; the monitor defaults to Lead II
- A 4 lead is not sufficient to rule out cardiac ischemia or injury – a 12 lead must be performed

Medical Director: M. Riccardo Colella, DO, MPH, FACEP

Revision Date: September 2018