



**Trauma**  
**MASS CASUALTY TRIAGE + S.A.L.T.**  
**Practice Guideline**

**Patient Care Goals:**  
 Move pts away from incident towards resources for more comprehensive care

**General Principles:**  
 Move as quickly as possible  
 Begin transports of RED a.s.a.p.  
 Don't neglect triage/ED capacity/command  
 Reassess at zone area  
 Over-triage as harmful as under-triage  
 Dynamic situation due to changing resources

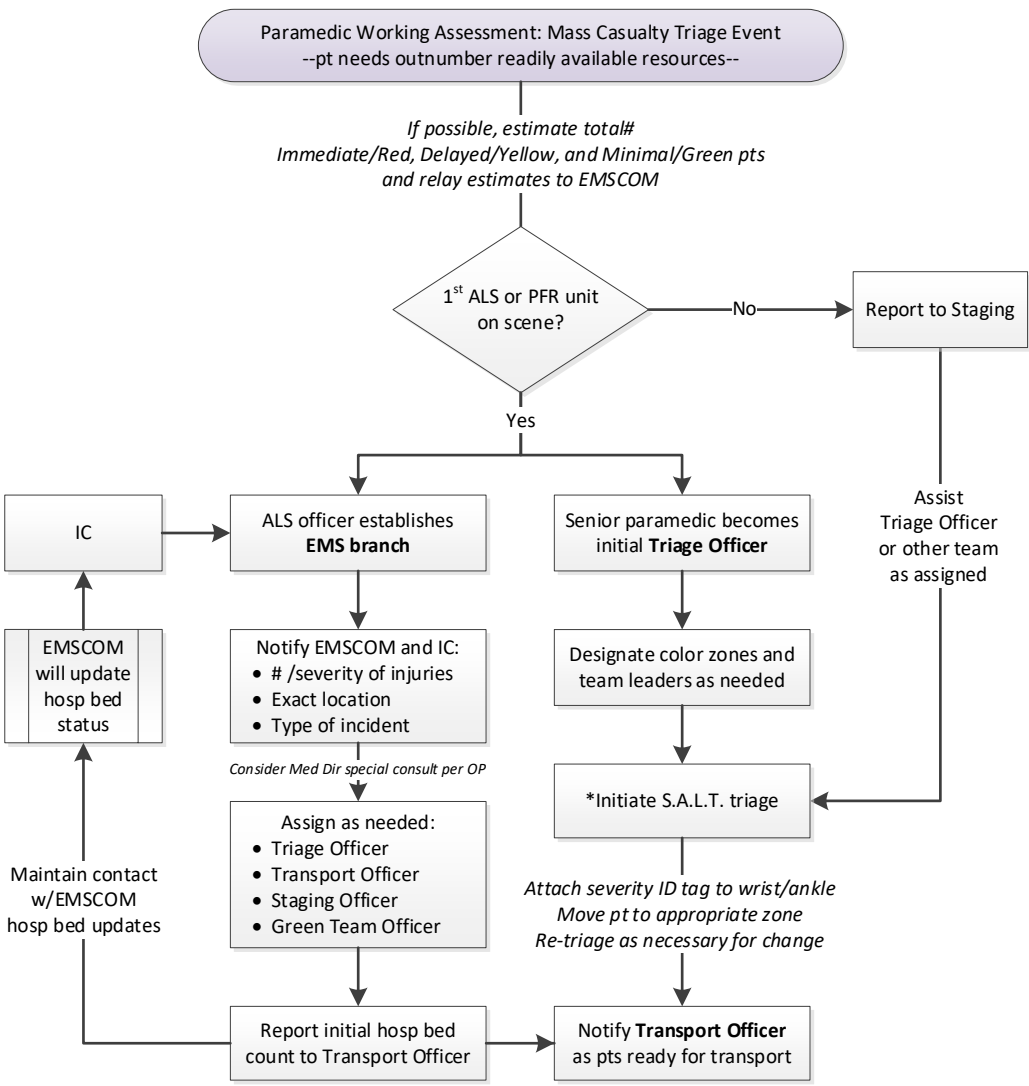
**Patient Management:**  
 \*S.A.L.T. Triage  
 Sort  
 Assess  
 Life Saving Interventions (LSI)  
 Treatment/Transport

**LSIs**  
 Control major hemorrhage  
 Open airway (if child, 2 rescue breaths)  
 Needle chest decompression  
 Auto-inject antidotes if appropriate

**Categories**  
 Red ● Immediate  
 Yellow ● Delayed  
 Green ● Minimal  
 Gray ● Expectant  
 Black ● Dead

**Utilization order of EMS resources:**  
 ◇ Local EMS agency, shared services, and mutual aid units (including air ambulances)  
 ◇ Zone resources (MABAS)  
 ◇ Activation of Milwaukee County Disaster Plan (Annex H-3) may be requested by Incident Commander through Milwaukee County Emergency Management

Refer to individual fire department disaster/multi-casualty incident position descriptions for further specific duties.  
 BLS transport units should use MCI ambulance-to-hosp communication protocol  
 EMS units should report back to staging after transport until released by Incident Command



\*SALT Triage Diagram p.2



**Trauma**  
**MASS CASUALTY TRIAGE + S.A.L.T.**  
**Practice Guideline**

**Step 1**  
Global sorting

**Still / obvious life threat**  
Assess first

**Wave / purposeful movement**  
Assess second

**Walk**  
Assess third

**Step 2**

Individual assessment

- LSI:**
- Control major hemorrhage
  - Open airway (if child, consider two rescue breaths)
  - Needle chest decompression
  - Auto-injector antidotes

Breathing?  
 Yes → [Next Step]  
 No → **Dead**

- Obeys commands or makes purposeful movements?
- Has peripheral pulse?
- Not in respiratory distress?
- Major hemorrhage controlled?

Minor injuries only?  
 All Yes → [Next Step]  
 No → **Delayed**

**Minimal**

Likely to survive given current resources?  
 Yes → **Immediate**  
 No → **Expectant**