

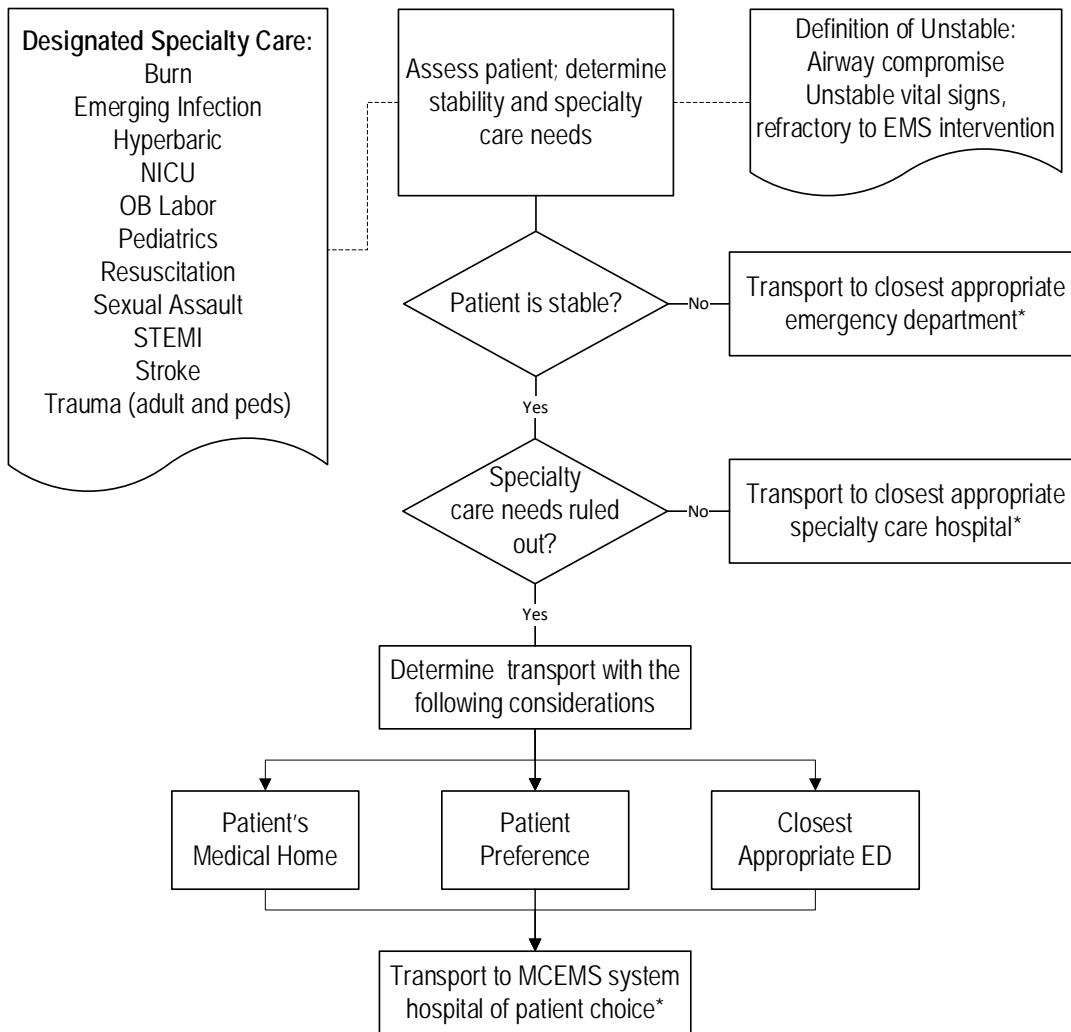


**HOSPITAL DESTINATION AND TRANSPORT
Operational Policy**

POLICY: This policy provides principles and decision-making guidance for patients, EMS providers and hospitals within the Milwaukee County EMS system

Guiding Principles

- EMS and health care systems will partner to ensure access to safe and high quality care.
- Patients have the right to make informed health choices including hospital destination within the Milwaukee County EMS System. Care outside of an informed patient care choice may impact safety and quality, as well as pose economic risks.



Continued Next Page



**HOSPITAL DESTINATION AND TRANSPORT
Operational Policy**

Emergency Departments		
Ascension: All Saints (Racine) Elmbrook Memorial Franklin St. Francis St. Joseph St. Mary's Milwaukee St. Mary's Ozaukee *Ascension WI Greenfield *Ascension WI Menomonee Falls	Aurora: Grafton Sinai St. Luke's Medical Center St. Luke's South Shore West Allis Medical Center Children's Hospital and Health System Children's Hospital of Wisconsin	Froedtert Health: Froedtert Froedtert Menomonee Falls *Froedtert Community Hospital Mequon *Froedtert Community Hospital New Berlin *Froedtert Community Hospital Oak Creek *Froedtert Community Hospital Pewaukee ProHealth Care: Waukesha Memorial VA Medical Center (VA) Zablocki VA Medical Center
Specialty Care Conditions	Hospital	
Burn (without major trauma) Age 18 and greater Age less than 18	Ascension: St. Mary's Milwaukee Children's Hospital of Wisconsin	
Emerging Public Health Infectious Diseases	As directed through the Milwaukee County Office of Emergency Management in conjunction with local, state, and federal public health authorities	
Hyperbaric (CO poison, dive related decompression)	Aurora: St. Luke's Medical Center	
Neonatal Intensive Care Unit (Unstable neonates delivered in the field)	Ascension: St. Joseph, Ascension St. Mary's Milwaukee, All Saints – Racine Children's Hospital of Wisconsin	
Obstetric patients in active labor The following hospitals have obstetric services—the facility where patient is receiving prenatal care is preferred	Ascension: All Saint's Racine, Elmbrook, St. Francis, St. Joseph, St. Mary's Milwaukee, St. Mary's Ozaukee Aurora: Grafton, Sinai, West Allis Medical Center (Women's Pavilion) Froedtert: Froedtert Hospital, Froedtert Menomonee Falls ProHealth: Waukesha Memorial NOTE: All emergency departments are equipped and required to receive OB patient in active labor if imminent delivery is occurring and transport to a hospital with obstetric care would pose a delivery risk.	
Pediatric emergency, critical care and specialty services	Children's Hospital of Wisconsin	
Resuscitation (Sudden cardiac arrest, includes ROSC and patients transported w/CPR)	Ascension: All Saint's Racine, Elmbrook, St. Joseph, St. Mary's Milwaukee Aurora: Grafton, St. Luke's Medical Center Children's Hospital of Wisconsin Froedtert: Froedtert Hospital ProHealth: Waukesha Memorial	
Sexual Assault Age 18 and greater Age less than 18	Aurora: Sinai, West Allis Medical Center (Women's Pavilion) Children's Hospital of Wisconsin Froedtert: Froedtert Hosp, Froedtert Meno Falls, Froedtert Comm Hosp: Mequon, New Berlin, Oak Creek, Pewaukee	
STEMI ST segment elevation myocardial infarction	Ascension: All Saint's Racine, Elmbrook, St. Joseph, St. Mary's Milwaukee Aurora: Grafton, St. Luke's Medical Center Children's Hospital of Wisconsin Froedtert: Froedtert Hospital ProHealth: Waukesha Memorial	
Stroke - LVO Negative LKW less than 24 hours	Transport to the closest Primary Stroke Center (PSC) Ascension: All Saints Racine, Elmbrook, Franklin, St. Francis, St. Joseph, St. Mary's Milwaukee, St. Mary's Ozaukee Aurora: Grafton, Sinai, St. Luke's Medical Center, St. Luke's South Shore, West Allis Medical Center Children's Hospital of Wisconsin Froedtert: Froedtert Hospital, Froedtert Menomonee Falls ProHealth: Waukesha Memorial	
Stroke - LVO Positive LKW less than 24 hours	Transport to closest Comprehensive Stroke Center (CSC): Ascension: St. Mary's Milwaukee Aurora St. Luke's Medical Center Children's Hospital of Wisconsin Froedtert Hospital <div style="border: 1px solid black; padding: 5px; width: fit-content; margin-left: auto; margin-right: auto;"> NOTE: Direct transport to CSC if it <u>does not add</u> >15 min to closest PCS transport time </div>	
Trauma Centers Age 18 and greater Age less than 18	Froedtert Hospital Children's Hospital of Wisconsin	

Note: Psychiatric emergencies can be properly cared for at any receiving facility ED *Limited Resource Hospital Emergency Department. See p.4



**HOSPITAL DESTINATION AND TRANSPORT
Operational Policy**

<i>Receiving hospital for specialty care conditions</i>								
<i>Hospital</i>	<i>Stroke</i>	<i>RESUS</i>	<i>STEMI</i>	<i>Trauma</i>	<i>Burn</i>	<i>Unstable Newborn</i>	<i>Hyperbaric</i>	<i>Sexual Assault</i>
Ascension All Saints Racine	Primary	Y	Y	N	N	Y	N	N
Ascension Elmbrook	Primary	Y	Y	N	N	N	N	N
Ascension Franklin	Primary	N	N	N	N	N	N	N
Ascension St. Francis	Primary	N	N	N	N	N	N	N
Ascension St. Joseph	Primary	Y	Y	N	N	Y	N	N
Ascension St. Mary's – Milwaukee	Comprehensive LVO+	Y	Y	N	18 years & over	Y	N	N
Ascension St. Mary's – Ozaukee	Primary	N	N	N	N	N	N	N
Ascension *LRHED Ascension WI – Greenfield	N	N	N	N	N	N	N	N
Ascension *LRHED Ascension WI – Meno Falls	N	N	N	N	N	N	N	N
Aurora Grafton	Primary	Y	Y	N	N	N	N	N
Aurora Sinai	Primary	N	N	N	N	N	N	Over 18 years
Aurora St. Luke's Milwaukee	Comprehensive LVO+	Y	Y	N	N	N	CO without burns	N
Aurora St. Luke's – South Shore	Primary	N	N	N	N	N	N	N
Aurora West Allis Medical Center	Primary	N	N	N	N	N	N	Over 18 years
Children's Hospital of Wisconsin	Primary	Y	Y	Under 18 years	Under 18 years	Y	N	Under 18 years
Froedtert Froedtert Hospital	Comprehensive LVO+	Y	Y	18 years & over	N	N	N	Over 18 years
Froedtert Froedtert Menomonee Falls	Primary	N	N	N	N	N	N	Over 18 years
Froedtert *LRHED Froedtert CH – Mequon	N	N	N	N	N	N	N	Over 18 years
Froedtert *LRHED Froedtert CH – New Berlin	N	N	N	N	N	N	N	Over 18 years
Froedtert *LRHED Froedtert CH – Oak Creek	N	N	N	N	N	N	N	Over 18 years
Froedtert *LRHED Froedtert CH – Pewaukee	Primary	Y	Y	N	N	N	N	Over 18 years
Pro Health Waukesha Memorial	N	N	N	N	N	N	N	N
VA Zablocki Medical Center	N	N	N	N	N	N	N	N

Note: Psychiatric emergencies can be properly cared for at any receiving facility ED

*Limited Resource Hospital Emergency Department. See p.4



***Limited Resource Hospital Emergency Department Guiding Principles:**

Milwaukee County EMS recognizes approved Limited Resource Hospital Emergency Departments (LRHED) (aka Neighborhood or Micro Hospitals) as an additional community resource and transport destination for the appropriately identified EMS patient.

LRHED's can stabilize emergencies and arrange secondary transfer for patients that need traditional acute care hospital services.

LRHED's have in-patient capabilities/beds but the inpatient units usually lack:

1. Any specialty designations (Stroke, STEMI, RESUS, etc)
2. ICU level care
3. Any surgical capabilities
4. Any medical procedural/interventional capabilities (i.e. cath, EGD, bronchoscopy, etc)
5. Ancillary services (often no PT/OT, specialty care consults (varies), respiratory care, etc)

Secondary transfer from a LRHED to an acute care hospital may have inherent delays to life or time-sensitive interventions and other immediate support needs of an acute care hospital regardless of a seamless transfer process.

Secondary transfer from a LRHED to a hospital may be associated with increased costs to patients (second ambulance bill, other professional services, etc.).

The following patients should **NOT** be transported to a LRHED**:

- Meeting Level I/II trauma center criteria
- Field identified STEMI
- Field identified Stroke
- Post-Cardiac Arrest Syndromes (ROSC)
- Pregnant > 20 weeks of gestational age with obstetric related concerns
- Meeting Burn Center Criteria
- Open fractures
- Major pediatric injury or illness
- With advanced airway that is adequately managed

** If a patient is experiencing a life-threatening condition that is unable to be managed by EMS providers in the field and that will likely decompensate prior to reaching an acute care hospital, EMS providers can transport such patients to a Limited Resource Hospital ED if it is the closest emergency department for stabilization.



***Hospital Access, BYPASS and Limited-Divert Conditions:**

The Milwaukee County EMS system recognizes EMResource as an important notification tool between hospital and EMS agencies and modifies the ALERT STATUS definitions to align with our system practice.

Hospital based emergency departments, Free-Standing Emergency Departments and in-patient hospitals may experience an inability to provide access for emergency department or hospital care (the ability to accept/admit to the hospital not reflecting emergency department status) due to two general situations:

1. **BYPASS** CONDITIONS:

A facility has sustained a major internal emergency (structural damage, environmental, HAZMAT, utilities failure, security, etc.) and cannot treat any patients, including self-referrals, by EMS or interfacility transfers. The emergency departments and/or hospitals should immediately inform the EMS system by changing the applicable ED Status and/or Hospital Status alert to **Bypass** on the EMResource website followed by phone notification to the Milwaukee County EMS Communication Center at 414.278.4343. Emergency departments and/or hospitals may delegate notification responsibility to EMS Communication Center during this phone call. The Milwaukee County EMS Communication Center will work with affiliated agencies to inform EMS of the **Bypass** condition. The emergency department or hospital will be closed to ambulance transports during this time period. The emergency department or hospital will inform the EMS system when the **Bypass** condition resolves by changing the status to **"OPEN"** on the EMResource website followed by phone notification to the Milwaukee County EMS Communication Center at 414.278.4343.

2. **LIMITED DIVERT** CONDITIONS:

A critical equipment failure or similar interruption that precludes providing emergency department access for special care needs (e.g. CT scanner failure precluding assessment for patients having stroke symptoms, interventional lab failure precluding stroke or STEMI care, etc.). Emergency departments should immediately inform the EMS system by changing the ED Status to **LIMITED DIVERT** on the EMResource website followed by phone notification to the Milwaukee County EMS Communication Center at 414.278.4343. Emergency departments and/or hospitals may delegate notification responsibility to EMS Communication Center during this phone call. The Milwaukee County EMS Communication Center will work with affiliated agencies to inform EMS of the **LIMITED DIVERT** condition. The emergency department will be closed for the specialty care condition but remain open to all other ambulance transports. The emergency department will inform the EMS system when the **LIMITED DIVERT** condition resolves by changing the ED status to **"OPEN"** on the EMResource website followed by phone notification to the Milwaukee County EMS Communication Center at 414.278.4343.

The Milwaukee County EMS Medical Director may further triage **LIMITED DIVERT** conditions and EMS transports based on the operational needs and capacities of the EMS system.

The Milwaukee County EMS System does not operationally recognize the **Peak Census** status definition on EMResource. Ambulances will not divert due to Peak Census status alone.