



**Universal Care  
MEDICATION CROSS CHECK  
Practice Guideline**

ADAPTED WITH PERMISSION FROM WICHITA-SEDGWICK COUNTY EMS SYSTEM

The MACC must be completed prior to the administration of any medication.

If a discrepancy, disagreement, or need for clarification is encountered at any step in the process, it MUST be resolved prior to continuing the cross-check.

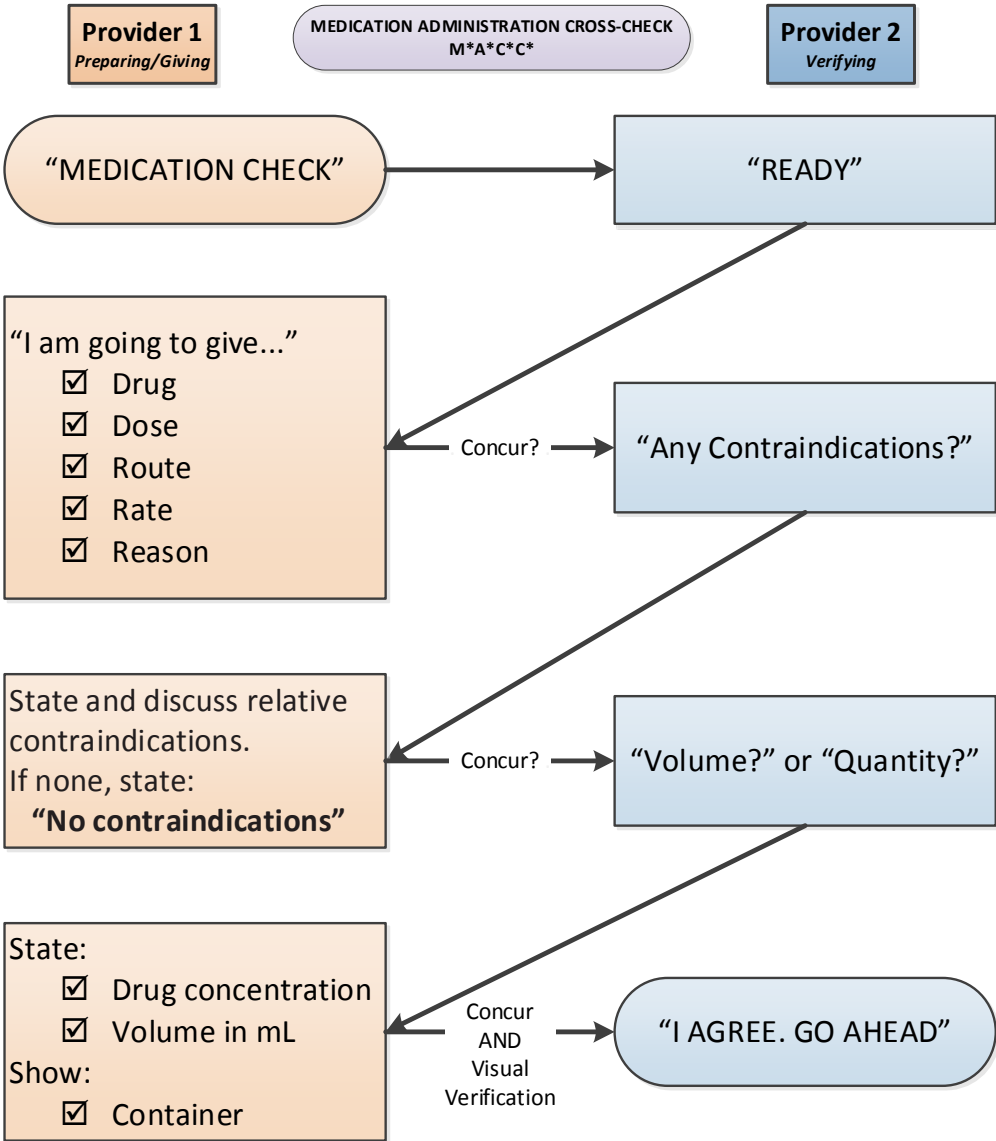
If there is an interruption or change in patient condition of any kind, the process must be re-initiated by Provider 1.

**Contraindications** include:

- ❖ Expiration date
- ❖ Known patient allergies
- ❖ Verification of appropriate vital signs

Avoid ambiguous statements of confirmations like 'okay.'

Essentially only Provider 2 can authorize the administration of the medication.



**RED RULE of Medication Administration**  
**(A Duty to Avoid Causing UNJUSTIFIABLE Harm)**  
**NEVER give the contents of a syringe that is not labeled or**  
**without visualizing the vial or ampule from which it was immediately drawn**

Initiated: 03/01/2018  
 Reviewed/Revised:  
 Revision

Approved: Benjamin Weston, MD, MPH Medical Director  
 Approved: Dan Pojar, BSEMS, FP-C, NRP EMS Division Director  
 WI DHS EMS Approval: 03/01/2018

Pg 1 of 1