



# OEM-EMS CV-19 Testing

EMT

AEMT

Paramedic

Active Duty Fire/EMS Personnel Only – MUST Show Valid ID

## Eligibility Criteria



The Milwaukee County EMS System is experiencing an outbreak of COVID-19. An outbreak is defined as 2 or more individuals testing positive for COVID-19 in the previous 14 days. Any active EMS personnel within the Milwaukee County EMS System that meets ANY of the below criteria is eligible for testing:

1. Experiencing any symptom(s) of COVID-19
2. In close contact with a person testing positive for COVID-19
3. Referred for testing by public health agency or health care provider
4. Otherwise elevated concern for COVID-19

## Screening & Scheduling



Complete the [Outbreak Testing Site Form](#) and select your testing date.  
Hours of operations are Monday, Wednesday, and Friday from 0900-1200 (except holidays).  
Location map on page 2

## PPE



All members seeking testing are required to wear a mask while waiting in line and inside the clinic.  
Cones will be laid out to identify a 6 foot space.  
Congregating is not allowed under any circumstances.

## Registration



Click here to access [CovidConnectWI](#) and complete the registration.  
This **MUST** be completed before arrival for testing.  
Present your QR code to the specimen collector upon request.

## Results

Results will automatically be sent to the e-mail you register with CovidConnectWI.  
Results will be shared with Public Health via WEDSS.  
Results take approximately 48 hours.

results

Resources



# OEM-EMS COVID-19 Testing

EMT

AEMT

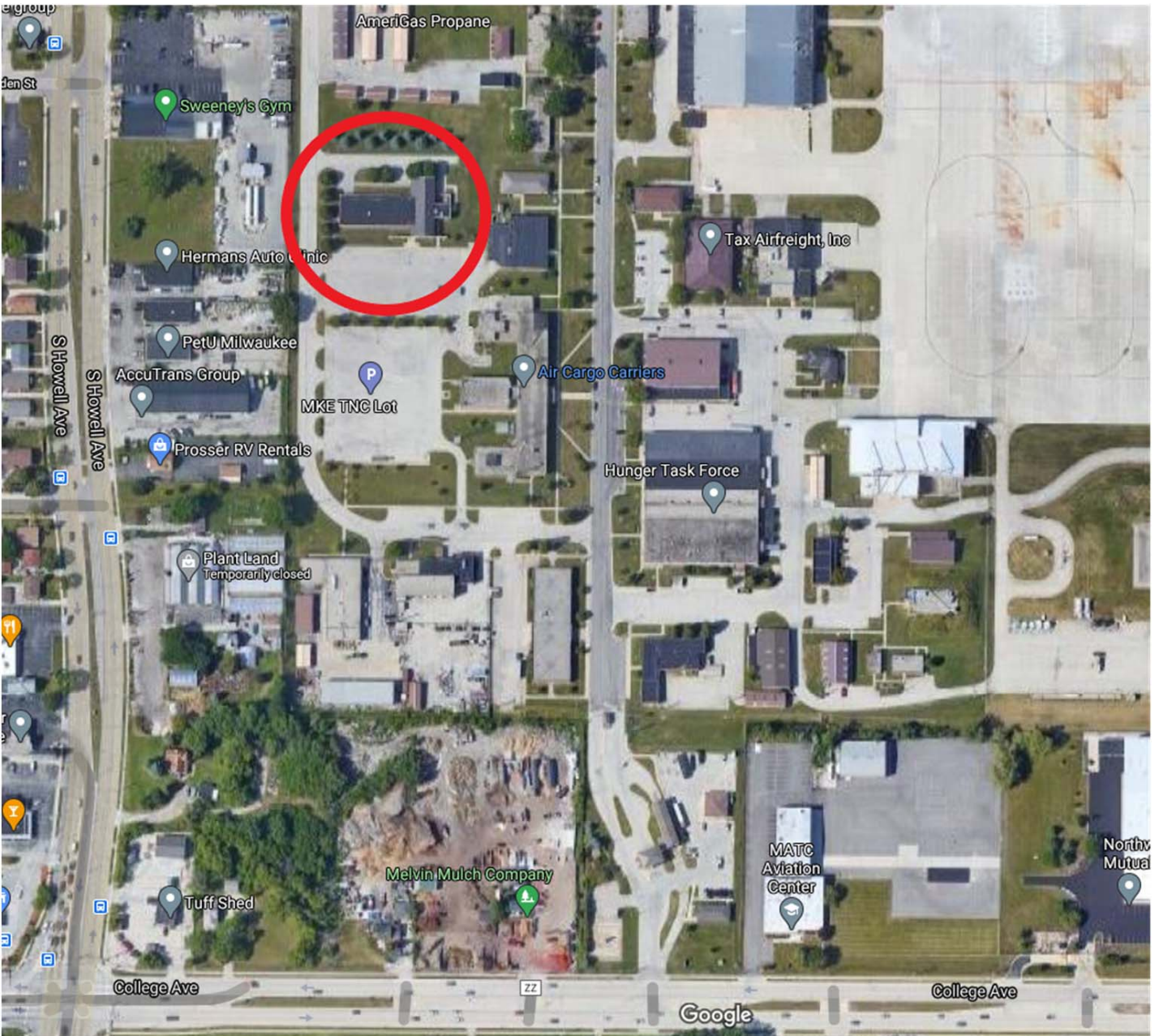
Paramedic

### Parking:

Parking in the lot is free.

Enter the structure from the north (double doors on the west end of the structure).

Enter the 440th gates from College Avenue and follow the signage to the "Staging Lot". The OEM SUV will indicate the area to line up for testing.



Resources