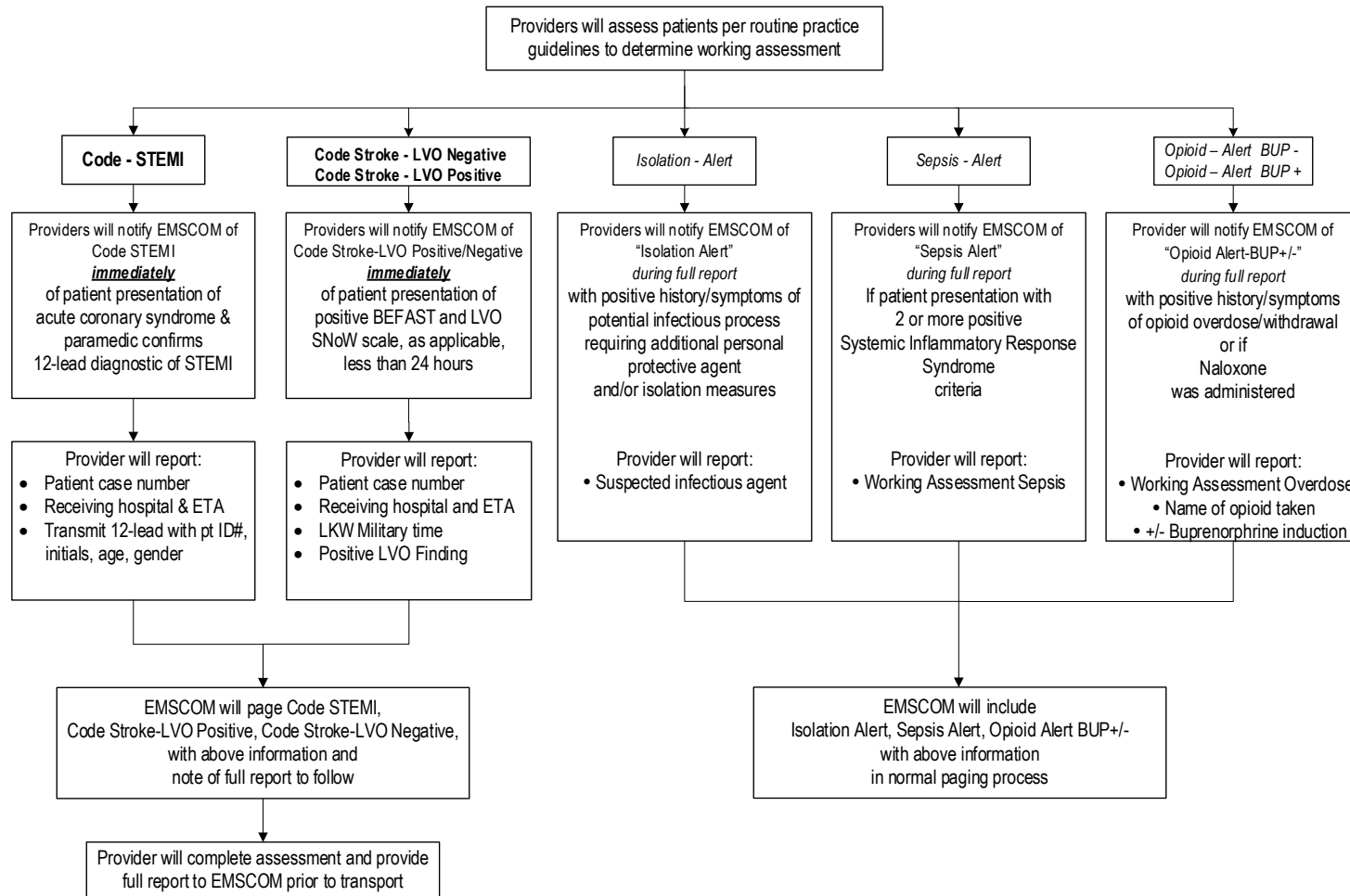




ALERTS: ISOLATION, OPIOID, SEPSIS

Universal Care:
CODE: STEMI, STROKE LVO POSITIVE/NEGATIVE
Practice Guideline



Initiated: 11/04/2013
 Reviewed/Revised: 04/15/2023
 Revision 8

Approved: Benjamin Weston, MD, MPH Medical Director
 Approved: Dan Pojar, BSEMS, FP-C, NRP EMS Division Director
 WI DHS EMS Approval: 06/15/2020



ALERTS: ISOLATION, OPIOID, SEPSIS

Universal Care:
CODE: STEMI, STROKE LVO POSITIVE/NEGATIVE
Practice Guideline

POLICY: Milwaukee County EMS Communications will provide early notification of the impending arrival of patients with the following working assessments:

- Suspected STEMI as identified by patient presentation of acute coronary syndrome and paramedic confirmed 12 lead diagnostic of STEMI
- Suspected STROKE LVO NEGATIVE as identified by a positive BEFAST, negative LVO, and last known well (LKW) military time less than 24 hours
- Suspected STROKE LVO POSITIVE as identified by a positive BEFAST, positive LVO, and last known well (LKW) military time less than 24 hours
- Suspected infectious process requiring additional personal protective equipment or isolation measures
- Suspected sepsis
- Suspected opioid use or withdrawal and whether patient received buprenorphine from EMS

Notes:

- **Code STEMI, Code Stroke LVO Negative, and Code Stroke LVO Positive are pre-arrival notifications.** The intention is to provide the receiving hospital with as much pre-arrival notification as possible to allow the hospital to gather resources not readily available in the emergency department.
- **Isolation Alert, Opioid Alert BUP+/-, and Sepsis Alert** are designed to increase awareness on the behalf of the receiving emergency department to allow for focused approaches to managing patients needing isolation, experienced an opioid overdose, or may be septic.

Initiated: 11/04/2013
Reviewed/Revised: 04/15/2023
Revision 8

Approved: Benjamin Weston, MD, MPH Medical Director
Approved: Dan Pojar, BSEMS, FP-C, NRP EMS Division Director
WI DHS EMS Approval: 06/15/2020