

MILWAUKEE TRANSPORT SERVICES, INC.

Monday, July 8, 2019

ADDENDUM NO: 1

BID NO: 2019-17 FIRE HYDRANT REPAIR

OPENING DATE: JULY 22, 2019 @ 2:00 PM, CST

PLEASE NOTE THE FOLLOWING QUESTION(S):

During the July 2, 2019 pre-bid walk through, vendors requested drawings of the hydrant area. They are attached here.

Also, find attached, the sign in sheet from the pre-bid walk through.

BID 2019-17

Please sign and return one copy with the BID Documents.

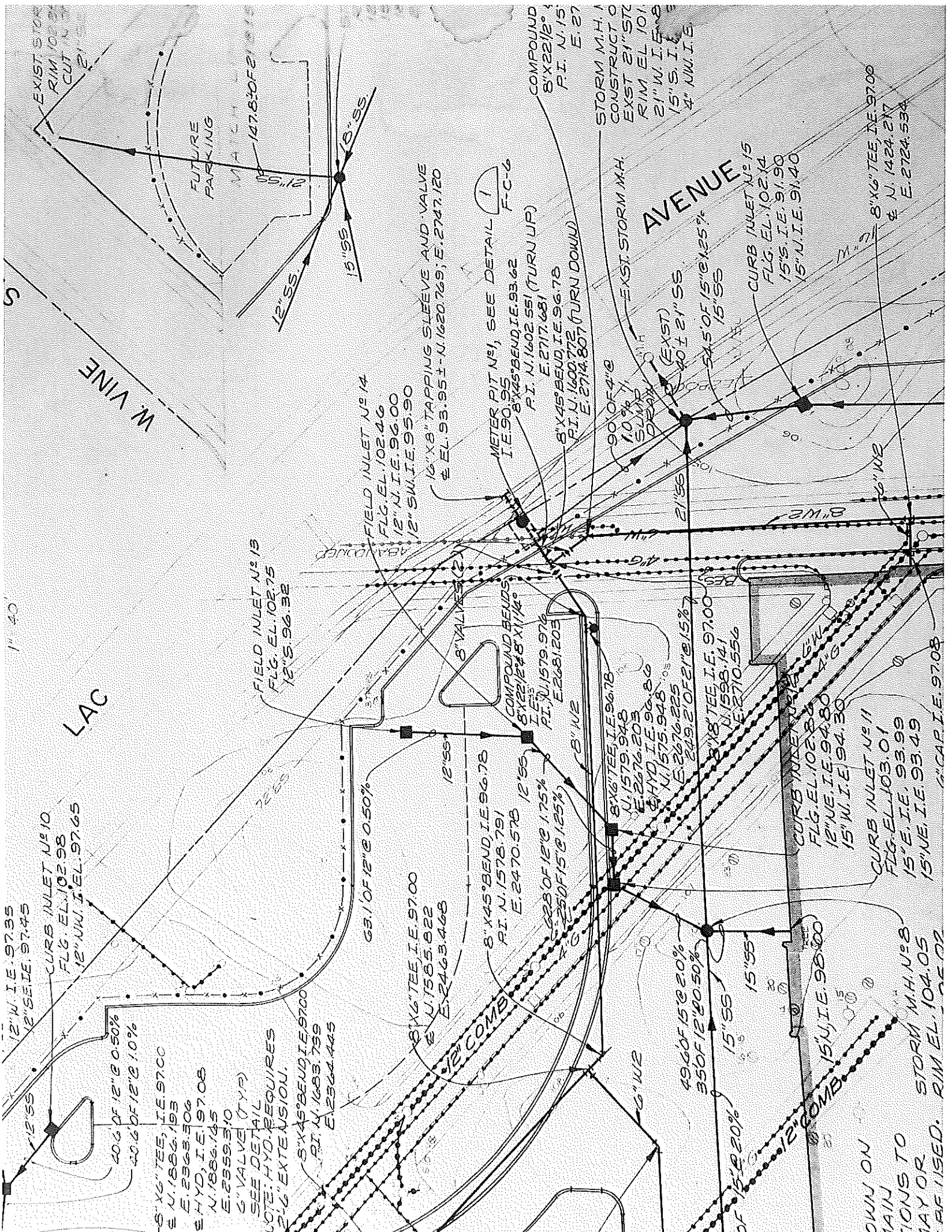
We acknowledge receipt of Addendum # 1.

Name

Company Name

Signature

Date



12" W.I.E. 97.35
12" S.E.I.E. 97.45

CURB INLET NO. 10
FLG. EL. 102.98
12" NW.I. EL. 97.65

40' OF 12" @ 0.50%
40' OF 12" @ 1.0%

8'x16" TEE, I.E. 97.00
N. 17882.193
E. 23663.306

HYD. I.E. 97.08
N. 1886.145
E. 23559.510

6" VALVE (TYP)
SEE DETAIL

NOTE: HYD. REQUIRES
2' L' EXTENSION.

8'x45' BEND, I.E. 97.00
P.I. N. 1683.759
E. 23664.445

8'x16" TEE, I.E. 97.00
N. 1585.822
E. 2463.468

8'x45' BEND, I.E. 96.78
P.I. N. 1576.791
E. 2470.578

COMPOUND BENDS
8'x22' 1/4" x 11' 1/4"
I.E. 96.78
P.I. N. 1579.976
E. 2651.203

8'x16" TEE, I.E. 96.78
N. 1579.948
E. 2676.203

HYD. I.E. 96.80
N. 1575.948
E. 2676.225

24' OF 12" @ 1.5%

8'x18" TEE, I.E. 97.00
N. 1588.141
E. 2710.556

8'x16" TEE, I.E. 97.00
N. 1588.141
E. 2710.556

CURB INLET NO. 11
FLG. EL. 102.84
12" NE. I.E. 94.80
15" NW. I.E. 94.30

CURB INLET NO. 11
FLG. EL. 103.01
15" E. I.E. 93.99
15" NE. I.E. 93.49

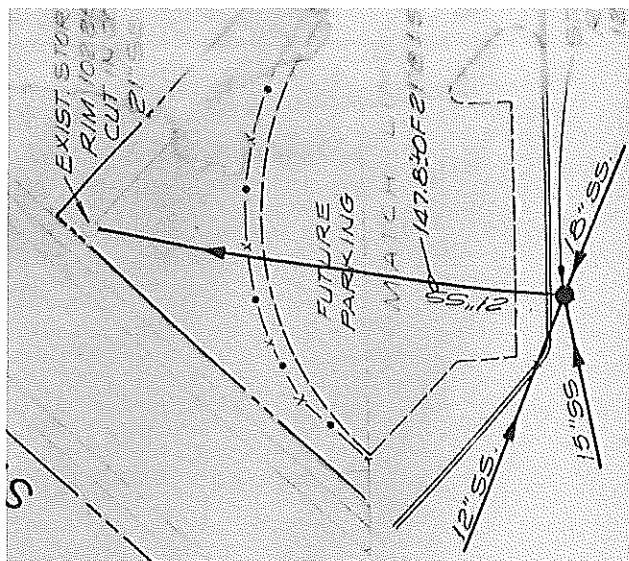
8'x16" TEE, I.E. 97.00
N. 1424.217
E. 2724.534

1" 40'

LAC

W VINE

AVENUE



FIELD INLET NO. 14
FLG. EL. 102.46
12" N. I.E. 96.00
12" S.W. I.E. 95.90

16" x 8" TAPPING SLEEVE AND VALVE
E. EL. 93.95 ± - N. 1620.769; E. 2747.120

METER PIT NO. 1, SEE DETAIL
F-C-6
I.E. 90.95
P.I. N. 1602.551 (TURN UP)
E. 2717.681

8'x45' BEND, I.E. 96.78
P.I. N. 1600.772 (TURN DOWN)
E. 2714.807

COMPOUND
8'x22' 1/2"
P.I. N. 1575.948
E. 2710.556

STORM M.H. NO. 8
CONSTRUCT
EXIST 21" ST
RIM EL 101.10
21" W. I.E. 96.80
15" S. I.E. 91.40
4" NW. I.E. 91.40

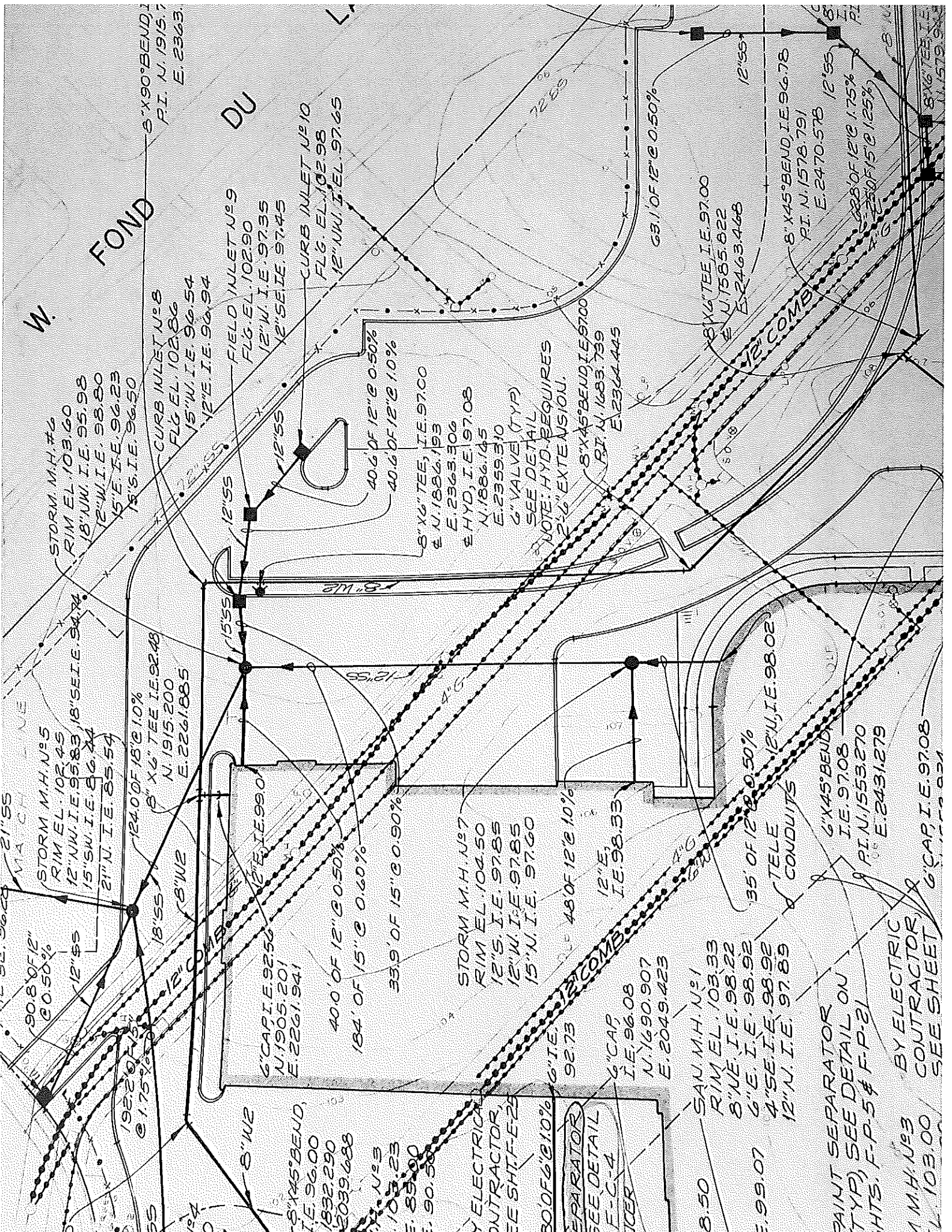
90' OF 4" @ 10%
SUMP
DRAIN

EXST. STORM M.H.
90' OF 4" @ 10%
SUMP
DRAIN

CURB INLET NO. 15
FLG. EL. 102.14
15" S. I.E. 91.90
15" N. I.E. 91.40

8'x16" TEE, I.E. 97.00
N. 1424.217
E. 2724.534

DOWN ON
MAIN
LINES TO
STORM M.H. NO. 8
MAY BE USED. RIM EL. 104.05



STORM M.H. #2
RIM EL. 103.60
12" NW, I.E. 95.98
12" W, I.E. 98.80
15" E, I.E. 96.23
15" S, I.E. 96.50

STORM M.H. #5
RIM EL. 102.45
12" NW, I.E. 95.83
15" SW, I.E. 96.24
21" N, I.E. 95.54

STORM M.H. #7
RIM EL. 103.60
12" NW, I.E. 95.98
12" W, I.E. 98.80
15" E, I.E. 96.23
15" S, I.E. 96.50

STORM M.H. #8
RIM EL. 102.86
15" W, I.E. 96.54
12" E, I.E. 96.94

STORM M.H. #9
RIM EL. 102.90
12" W, I.E. 97.35
2" SE, I.E. 97.45

STORM M.H. #10
RIM EL. 102.98
12" NW, I.E. 97.65

STORM M.H. #11
RIM EL. 104.50
12" S, I.E. 97.85
12" W, I.E. 97.85
15" N, I.E. 97.60

STORM M.H. #12
RIM EL. 104.50
12" S, I.E. 97.85
12" W, I.E. 97.85
15" N, I.E. 97.60

STORM M.H. #13
RIM EL. 104.50
12" S, I.E. 97.85
12" W, I.E. 97.85
15" N, I.E. 97.60

STORM M.H. #14
RIM EL. 104.50
12" S, I.E. 97.85
12" W, I.E. 97.85
15" N, I.E. 97.60

STORM M.H. #15
RIM EL. 104.50
12" S, I.E. 97.85
12" W, I.E. 97.85
15" N, I.E. 97.60

STORM M.H. #16
RIM EL. 104.50
12" S, I.E. 97.85
12" W, I.E. 97.85
15" N, I.E. 97.60

STORM M.H. #17
RIM EL. 104.50
12" S, I.E. 97.85
12" W, I.E. 97.85
15" N, I.E. 97.60

STORM M.H. #18
RIM EL. 104.50
12" S, I.E. 97.85
12" W, I.E. 97.85
15" N, I.E. 97.60

STORM M.H. #19
RIM EL. 104.50
12" S, I.E. 97.85
12" W, I.E. 97.85
15" N, I.E. 97.60

STORM M.H. #20
RIM EL. 104.50
12" S, I.E. 97.85
12" W, I.E. 97.85
15" N, I.E. 97.60

STORM M.H. #21
RIM EL. 104.50
12" S, I.E. 97.85
12" W, I.E. 97.85
15" N, I.E. 97.60

STORM M.H. #22
RIM EL. 104.50
12" S, I.E. 97.85
12" W, I.E. 97.85
15" N, I.E. 97.60

STORM M.H. #23
RIM EL. 104.50
12" S, I.E. 97.85
12" W, I.E. 97.85
15" N, I.E. 97.60

STORM M.H. #24
RIM EL. 104.50
12" S, I.E. 97.85
12" W, I.E. 97.85
15" N, I.E. 97.60

BY ELECTRIC CONTRACTOR, SEE DETAIL F-C-4
PAINT SEPARATOR (TYP) SEE DETAIL ON SHEETS F-P-5 & F-P-21
M.M.H. #3 BY ELECTRIC CONTRACTOR, SEE SHEET EL. 103.00