

**REQUEST FOR QUALIFICATIONS
FOR**


Professional Airport Consulting Services To Complete Environmental
Assessments
At Milwaukee Mitchell International Airport (MKE)
Pre-Proposal Meeting
3/1/2022



1

Agenda


- Sign in
- RFQ Location
- Review Scope
- Review List of Potential Projects
- Review Map of Potential Projects
- 2023 Project Urgency
- DBE Requirements
- Schedule



2

Sign In

- In Person
 - Name
 - Company
 - Email
 - DBE Status
- Via Teams
 - Type in the chat:
 - Name
 - Company
 - Email
 - DBE Status




3

RFQ Location

RFQ: MKE Airport Engineering/Professional Services
<https://county.milwaukee.gov/EN/Admin-Services/Bids-and-RFPs>


Any and all updates will be posted to this site up to 2 days prior to proposals being due.



4

Review Scope


- Seeking 1 qualified engineering / consulting team to supplement internal staff capabilities related to airfield environmental professional service needs at MKE.
- The consultant selection process and subsequent fee negotiation and contracting will follow the requirements of FAA AC 150/5100-14E.
- Scope and fee to be negotiated on a project by project basis.



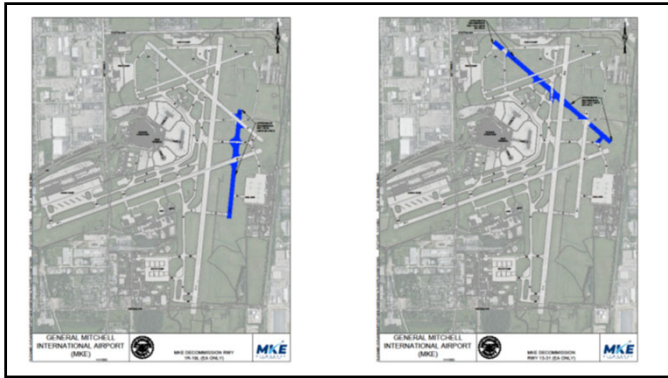
5

Projects

- Environmental Assessment for the Decommissioning of Runway 1R/19L
- Environmental Assessment for the Decommissioning of Runway 13/31




6



7

2023 Project Urgency

- Impacts to MKE's CIP
- Will need to negotiate scope and fees, finalize contracts, and start ASAP
 - Runway 1R/19L can start immediately
 - Runway 13/31 anticipated June start




8

Review DBE Requirements

- Anticipated 17% DBE participation goal for the projects under this RFQ.
- Submit your team, with team member DBE status with your qualification statements (Attachment 3 of RFQ).

Engineering / Professional Services at Milwaukee Mitchell International Airport (MKE)			
CONSULTANT TEAM MEMBERS			
Firm's Name	Address	CERTIFICATION STATUS	
		DBE	NONE


#Check applicable certification status boxes. Submit this form with proposal.



9

Review Schedule

2/20/2023 Issue Request for Qualifications
3/1/2023 Pre-Proposal Meeting (1pm)
3/23/2023 RFQ Due (12 pm Noon)
- Review Submission Requirements
4/4/2023 Selection Committee Review
4/11/2023 Consultant Interviews. Keep this day open. Consultants to be interviewed will be notified no later than end of business 4/4/2023.
4/12/2023 Consultant selection award (will occur no sooner than this date).



10



Questions?

Justin Weiss, PE
Project Manager – Airport Engineering
MKE & MWC
(414) 747-6233
jweiss@mitchellairport.com



11
