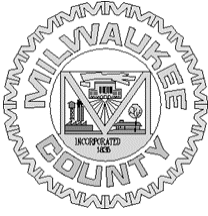


DEPARTMENT OF ADMINISTRATIVE SERVICES



Milwaukee County

September 19, 2025

To All Interested Consultants

Project: New Criminal Courthouse Planning Phase IV –
Surveying Services

Project No.: WC027601

Subject: ADDENDUM #1 TO REQUEST FOR
PROPOSALS (R.F.P.)

The Surveying Services pre-proposal meeting was held September 18, 2025, virtually via Teams meeting. The project background presentation and attendee list are included in the following pages of this addendum.

Questions regarding the RFP need to be formally submitted (regardless of discussion in the pre-proposal meeting) via email by 3:00 pm on September 24, 2025, to Peter Nilles at peter.nilles@milwaukeecountywi.gov and Patrick Flaherty at pflaherty@concord-cc.com.

Sincerely,

Peter Nilles
Director, Facilities Planning and Development



**Project: Milwaukee County New Criminal Courthouse Planning Phase IV
Surveying Services**

**SIGN-IN SHEET
PRE-BID MEETING – September 18, 2025
Location: Virtual Teams Meeting**

Name	Company	Email
Jon Chapman	raSmith	jon.chapman@rasmith.com
Mickala Brown	GRAEF	mickala.brown@graef-usa.com
David Koslo	GRAEF	david.koslo@graef-usa.com
Carla Rollins	GRAEF	carla.rollins@graef-usa.com
Angy Singh	KSingh	angy.singh@ksinghengineering.com
Pranav Seth	AECOM	pranav.seth@aecom.com
Dave Beck	Bloom Companies	dbeck@bloomcos.com
Jon Weil	Bloom Companies	jweil@bloomcos.com
Aaron Gash	Milwaukee County	aaron.gash@milwaukeecountywi.gov
Jenine Eilers	Milwaukee County	Jenine.eilers@milwaukeecountywi.gov
Peter Nilles	Milwaukee County	peter.nilles@milwaukeecountywi.gov
Kendall Noel	The Concord Group	knoel@concord-cc.com
Ana Kovacic	The Concord Group	akovacic@concord-cc.com
Bruce Wetzels	The Concord Group	bwetzels@concord-cc.com

Investing in Justice: Courthouse Complex Surveying Services

Optional Pre-Proposal Meeting
September 18, 2025

Department of Administrative Services
Facilities Management Division



Agenda

- Introductions
- Project Overview
- Project Site/Survey Area
- Project Scope
- RFP Schedule
- TBE Participation Requirements
- Questions



Project Overview

Courthouse Complex Modernization:

Milwaukee County is requesting proposals from qualified consultants to survey the County's Courthouse Complex, adjacent parcels and right of ways in Milwaukee, WI.

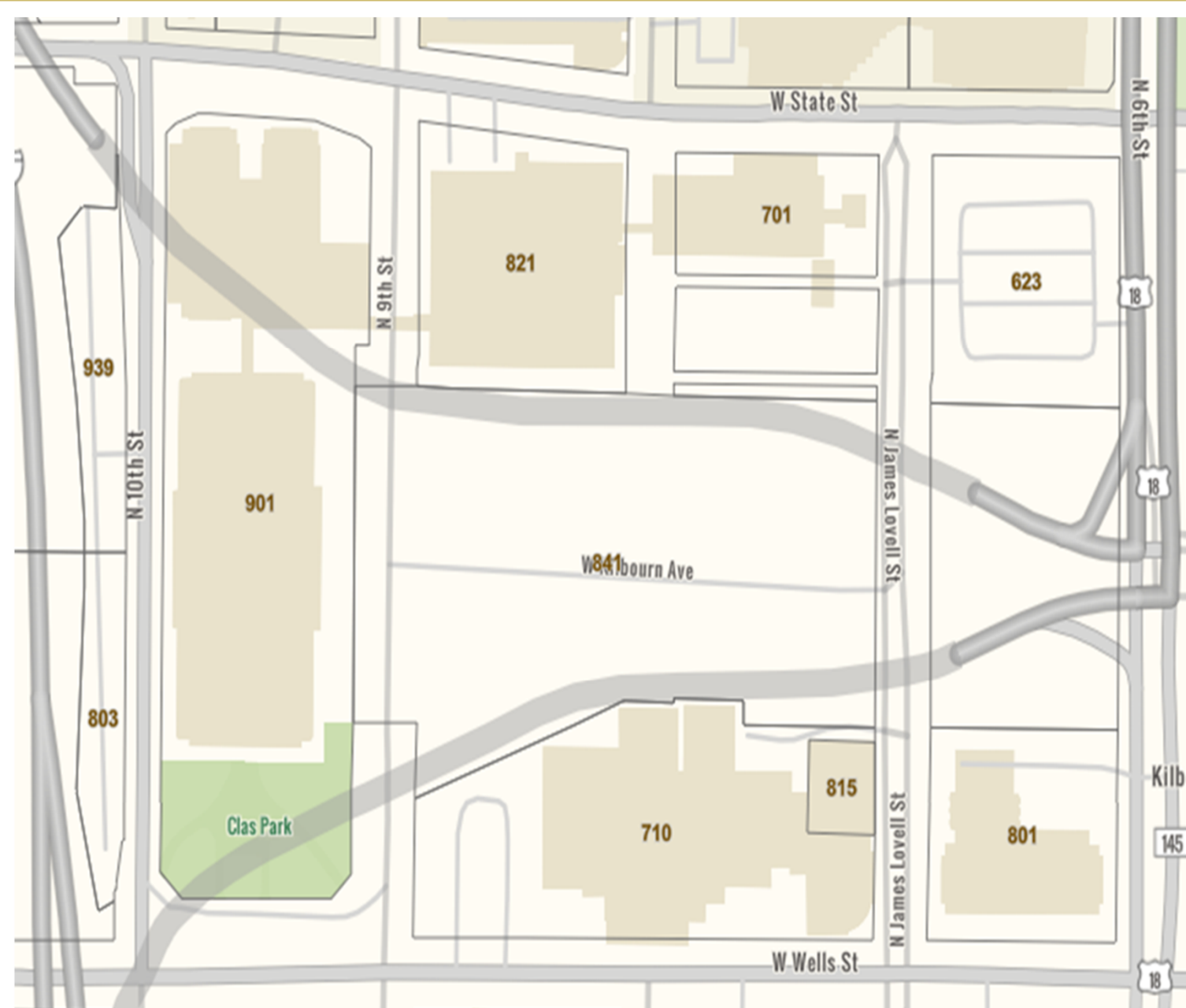
The survey will be used to provide critical site investigations, analysis, and recommendations to inform the design and construction decisions, ensure regulatory compliance, manage environmental risk, provide information for realistic cost estimating and safe construction execution at the new Milwaukee County Justice Courthouse Complex, which will replace the County's Public Safety Building.

Project Site/ Survey Area

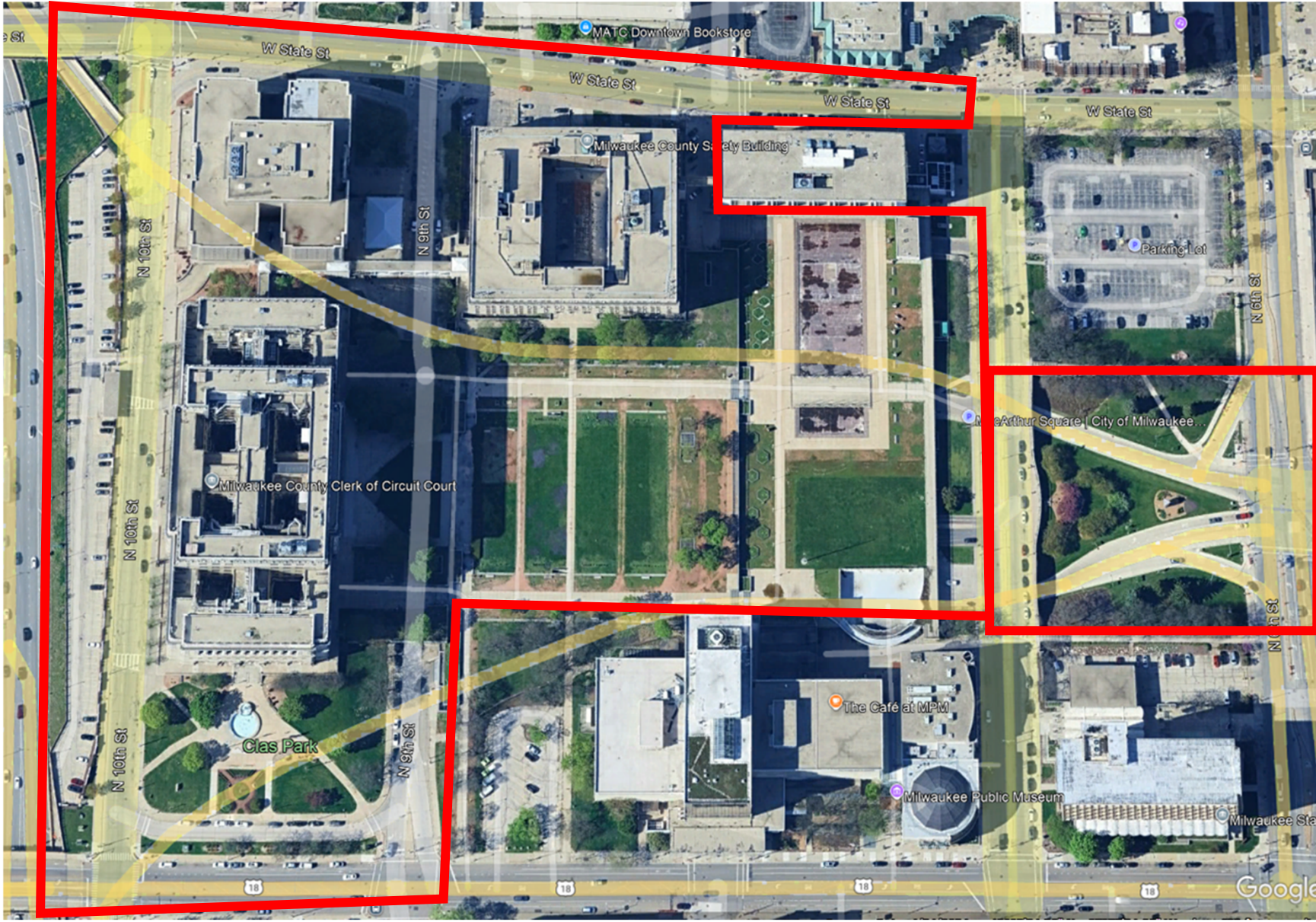
Survey Extents

The surveying consultants will be performing surveying services that include:

- Parcels: 803, 939, 821 (Public Safety Building), 841 (MacArthur Square), 901 (Historic Courthouse and Criminal Justice Facility),
- Right-of-Ways (ROW): 9th Street, 10th Street, W State Street and W. Wells street, the vacated Right-of-Way for 8th street
- Subsurface on and off ramps connecting I-43 to N 6th Street.
- MacArthur Square below-grade Parking Structure
- Two tunnels connecting MacArthur Square the Public Safety Building.



Project Site/ Survey Area



Project Scope

Project Management/Coordination

- Submit a Survey Work Plan, attend meetings, obtain and review pertinent documents from government and private entities, coordinate potholing, **coordinate with Digger's hotline and contract with private locating company.**

Field Verification & Survey Services

- ALTA/ACSM Boundary Survey
 - Provide detailed land boundary information for the courthouse complex parcels, adjacent properties and right of ways.
- Topographic Survey
 - Deliver detailed information about the natural and man-made features of the courthouse complex, adjacent properties and right of way.
- Utility Survey (including Sewer)
 - Locate and map all above-ground and underground utilities.
- MacArthur Square Below-grade Parking Structure
 - Provide accurate spatial and structural data of the parking structure and pedestrian tunnels
- Ramp to Kilbourn Avenue and Tunnels
 - Deliver precise spatial and structural data of the ramp to Kilbourn Avenue and Tunnels.

RFP Schedule

ACTIVITY	ANTICIPATED SCHEDULE
RFP-Issuance	September 12, 2025
RFP-Pre-proposal meeting (optional)	September 18, 2025, 3:00 p.m., via Teams
RFP Final Questions Due	September 24, 2025
RFP-Questions Addendum	September 29, 2025
RFP-Proposal Due Date	October 9, 2025, 3:00 p.m.
RFP-Scoring and Shortlist	October 17, 2025
RFP-Interviews (If required)	Week of October 20, 2025
RFP-Selection	October 31, 2025
RFP-Award, Contract Execution, Notice to Proceed	December 12, 2025



TBE Requirements

- 8.5% TBE participation goal
- RFP Attachment D – TBE Requirements
 - TBE-00 – TBE Utilization Specification for Professional Services
 - TBE-01
 - Certificate of Good Faith Efforts
 - Contractible Work Items
 - Soliciting from Interested Firms
 - TBE-02 – Subcontractor/Subconsultant/Supplier Information Sheet
 - TBE-14 – Commitment to Contract with TBE
- Questions? Email Jenine Eilers at oeicompliance@milwaukeecountywi.gov



RFP Response Submission Guidelines

- Prospective respondents are reminded to review Attachment B to this RFP in its entirety as that document governs form and content that should be included in the response.
- Responses are due October 9th, 2025, by 3:00pm.



Questions?

Peter Nilles at peter.nilles@milwaukeecountywi.gov
Patrick Flaherty at pflaherty@concord-cc.com

*To ensure a response from Milwaukee County,
submit any questions by September 24, 2025.*

