



Addendum 003

09/30/2024

Projects:

Milwaukee County Medical Examiner and Office of Emergency Management Facility
Secured Residential Care Center for Children and Youth (SRCCCY)
New DHHS / Coggs Admin Building

The purpose of this Addendum is to add existing facility site visits to our RFP process. The RFP Schedule and Evaluation Process as adjusted accordingly.

All Site Tours of Existing Facilities are OPTIONAL and do not require service provider presence to submit a proposal.

1. REVISED: Schedule and Evaluation Process

Existing Facilities Site Visits	October 7 th 2024
Questions/Requests for Information Due	October 9 th 2024
Final Addendum	October 15 th 2024
Responses are due on or before	October 23 rd 2024
Service Provider In-Person Interviews	Week of October 28 th
Service Provider selection / Notice to Proceed	November

2. Existing Facilities Tour Schedule

Date: October 7th, 2024

Coggs Admin Building	9:30 – 10:15
911 Communications & Radio Services	10:45 – 11:30
Medical Examiner	11:45 – 12:30
Office of Emergency Management	12:45 – 1:00
Wrap Up	1:00 – 1:30

Locations:

Coggs Admin Building: 1220 W. Vliet Street Milwaukee, WI 53205

911 Communications & Radio Services: 821 W. State Street, Milwaukee WI 53233

Milwaukee County Medical Examiner: 933 W Highland Ave, Milwaukee, WI 53233

Milwaukee County Office of Emergency Management: 633 W Wisconsin Ave Ste 700, Milwaukee, WI 53203

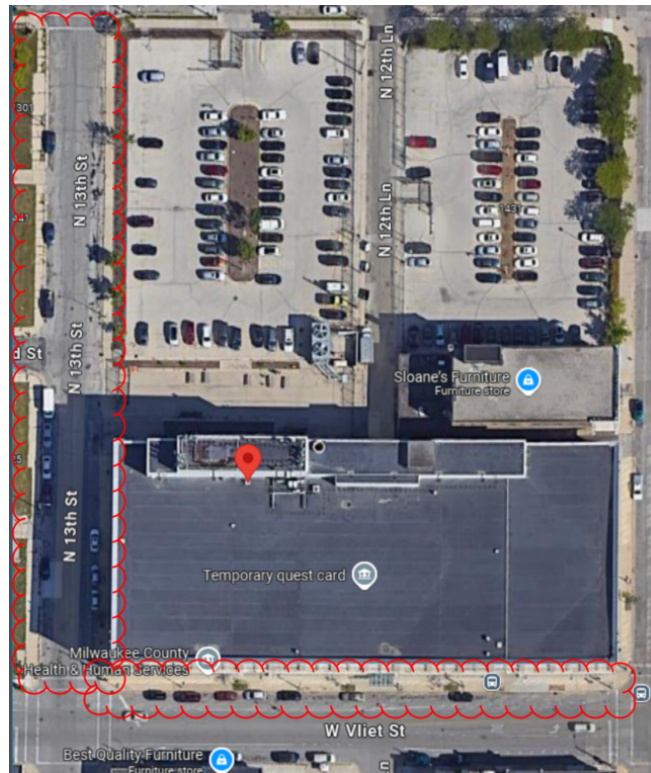
Carpooling to each existing facility is encouraged.

Parking Options:

Coggs Admin Building: 1220 W. Vliet Street Milwaukee, WI 53205

Street Parking – N 13th St

Street Parking – W Vliet St



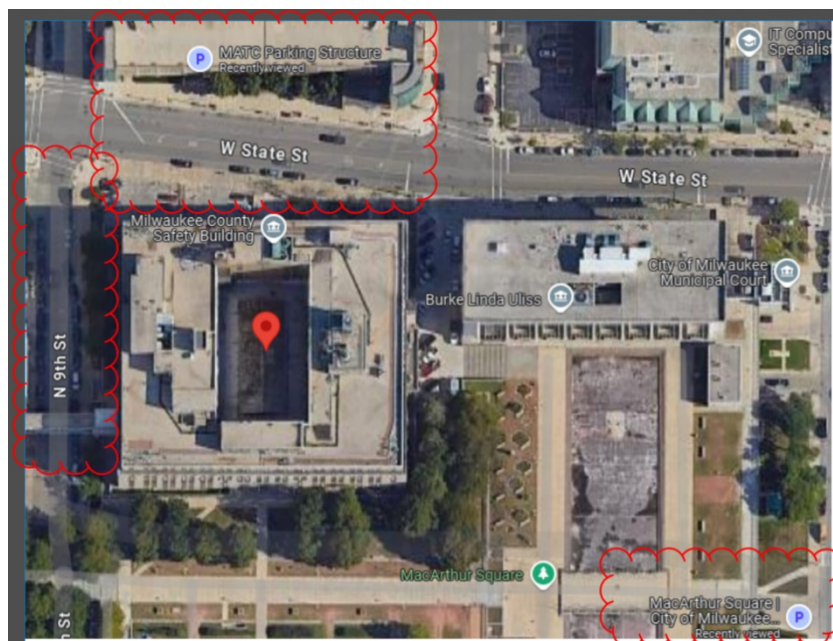
911 Communications & Radio Services: 821 W. State Street, Milwaukee WI 53233

Street Parking – N 9th St

Street Parking – W State St

Structured Parking – MacArthur Square Parking Structure

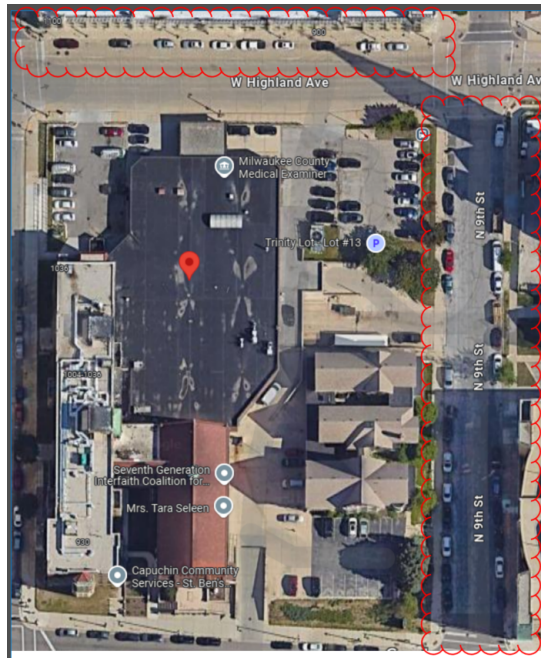
Structured Parking – MATC Parking Structure



Milwaukee County Medical Examiner: 933 W Highland Ave, Milwaukee, WI 53233

Street Parking – W Highland Ave

Street Parking – N 9th St



Milwaukee County Office of Emergency Management: 633 W Wisconsin Ave Ste 700, Milwaukee, WI 53203

Secure Parking – Clark Garage

Street Parking – W Wisconsin Ave

