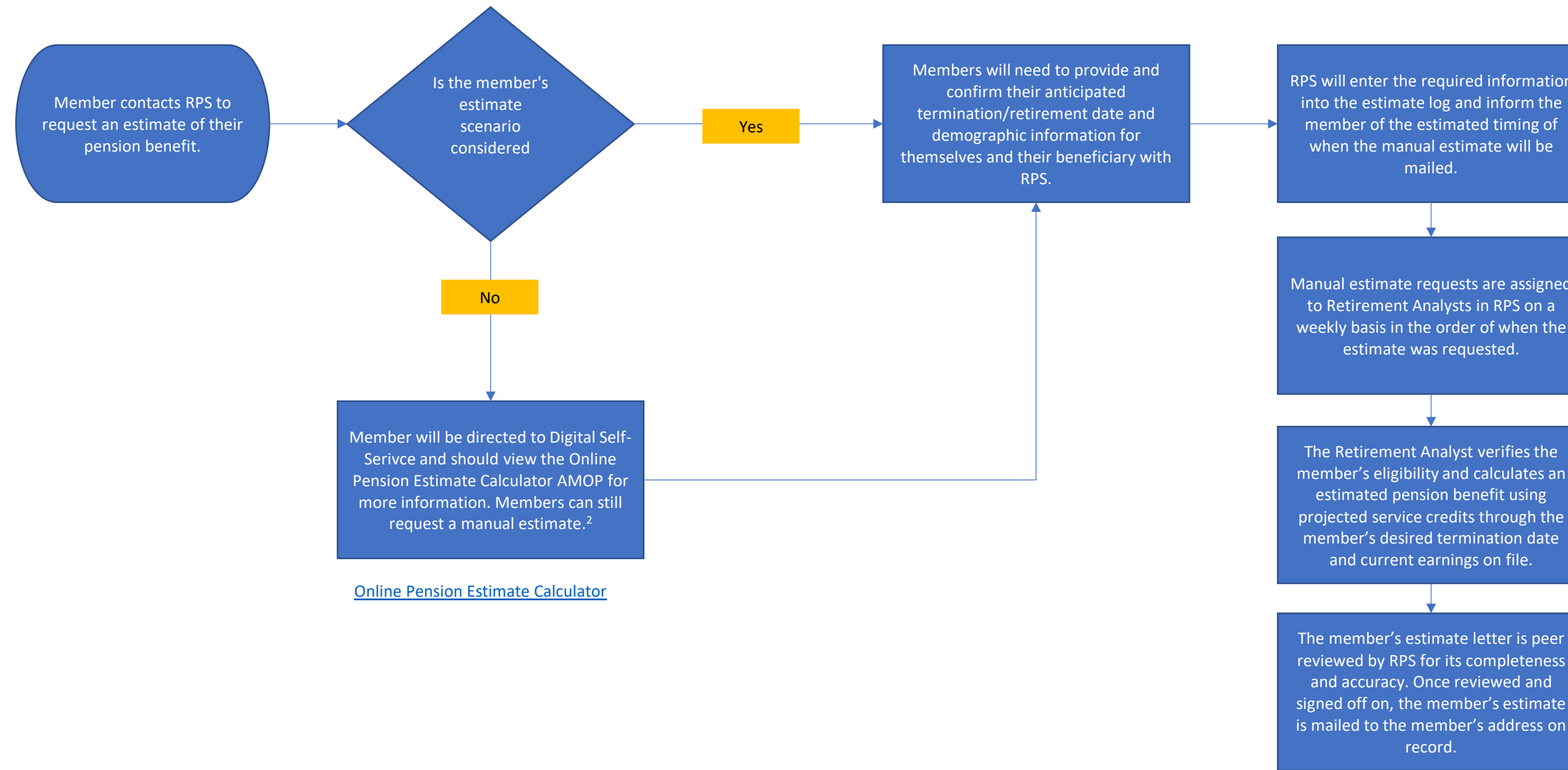


02.06.05 Estimate Request Process
Appendix C - Process Flowchart



¹ "Complex calculations" could include, but is not limited to, the following scenarios: divorced members, reciprocity, service in both ERS and OBRA, military time, active deaths, re-retirement, benefit waivers, buy-in/buy-back, multiple unions in work history.

² Any member of ERS (including those not yet vested) who is not already retired may request a manual estimate including up to four retirement scenarios in a 12-month period. A scenario includes a separation/retirement date plus a backdrop date (if any) and a beneficiary. Changing any of those three components (a separation/retirement date, a backdrop date, or a beneficiary) will constitute an additional scenario.