



MILWAUKEE COUNTY
DEPARTMENT OF HEALTH
& HUMAN SERVICES
**AGING & DISABILITIES
SERVICES**

Handy

News & Notes

Milwaukee Community Update – January 2026

Welcome to your monthly newsletter! Here you'll find exciting, fun-filled winter activities for the whole family to enjoy. Whether that's telling stories at the StorySlam, watching the Admirals play, or playing Bingo with family & friends.



Tell Your Story with Ex Fabula!

Ex Fabula StorySlams are live events where community members connect and share true, personal stories. All are welcome to attend.

At each event, any attendee can put their name in the hat for the chance to take the stage and share a story based on the night's theme. Audience members can also be a part of the storytelling by submitting UltraShorts! These are "ultra-short" stories on the night's theme, usually written on a slip of paper that are then read onstage by the emcee.

Accessibility

To encourage participation from a broad range of storytellers, we offer a variety of accommodation options upon request, including but not limited to:

- Reserved ADA seating
- Materials in Braille, large print, or text formats
- ASL interpretation
- Extended storytelling time for individuals who have related speech, language, memory, or other communication challenges
- Transportation reimbursement

Individuals can request accommodations by providing details in the "order notes" field during checkout or by reaching out to Ex Fabula Executive Director Megan McGee at 414-530-3503 or megan@exfabula.org.

Ex Fabula Winter Events

StorySlam: Brave (with ASL interpretation!)

Stories of Heroic Acts and Taking Risks

Date: Tuesday, January 6, 2026

Time: 6:30pm doors, 7pm stories

Location: Pilot Project Brewing, 1128 N 9th St, Milwaukee, WI 53233

Cost: \$12 advance / \$15 at the door if tickets remain.

Limited Pay-it-forward tickets available!

Tickets: <https://www.exfabula.org/product/storyslam-brave-1-6/>

AfterDark: For The Culture

A Night Celebrating Black and Brown Voices

Date: Thursday, February 12, 2026

Time: 6:30pm doors, 7pm stories

Location: Radio Milwaukee, 220 E Pittsburgh Ave, Milwaukee, WI 53204

Cost: \$12 advance / \$15 at the door if tickets remain.

Limited Pay-it-forward tickets available!

Tickets: <https://www.exfabula.org/product/afterdark-for-the-culture-2-12/>

Keep in Touch!

Ex Fabula on Facebook: <https://www.facebook.com/ExFabula>

Ex Fabula on Instagram: <https://www.instagram.com/exfabula/>

Ex Fabula on LinkedIn: <https://www.linkedin.com/company/exfabula/>

Email us: info@exfabula.org

Call us: 414-530-3503



SOUTHEASTERN WISCONSIN LIONS BOLD INC.

What is BOLD?

BOLD is open to all legally blind people. Event participation is free. BOLD's purpose is to allow the blind and visually impaired to experience outdoor sports and leisure activities while developing their social and athletic skills. For more information call Kevin Meyers, Outreach director at 414-839-0635 or Ray Tweedale, President at 262-224-5517.

BOLD Activities for January:

Cross-Country Skiing

Saturday, January 3rd, 17th, 31st

Time: 10:00am except January 17th (1:00pm)

Come and join the fun cross-country skiing. It is a great way to get a good workout. If you have never tried this easy sport, come with us and give it a try. Rental equipment is available. BOLD will pay for rental equipment if you do not have your own, which is available at the park.

The park has its own snow machine for making snow if necessary.

Lunch will be served after skiing.

Physical Requirements: Must be able to stand and walk on slick surfaces. We will train you to ski if needed.

Event Specific Requirements: Dress for cold conditions in layers with no cotton next to the skin, wicking material is preferred. Don't forget to wear a hat and gloves.

Note: Guide dogs are not recommended for this event.

Downhill Skiing

Sunday, January 4th, 11th, 18th, 25th

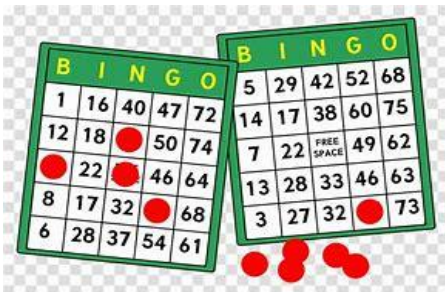
Time: 4:30pm –8:30pm

The BOLD downhill ski program has several guides who are professional ski instructors, (certified by the Professional Ski Instructors of America). The instructors are available for beginners and experienced VIP's and guides. The instructors are happy to introduce new participants to the sport as well as working with experienced skiers to enhance your skills. Guides are encouraged to arrive by 4:30pm for assignments and preparations to guide the VIPs.

Physical Requirements: Must be able to stand and walk on slick surfaces. Must be able to pay attention and respond to directions from a guide. We will train you to ski if needed.

Event Specific Requirements: Dress for cold conditions in layers with no cotton next to the skin, wicking material is preferred. Don't forget to wear a hat and gloves.

Note: The schedule is based on weather conditions. Cancellations will be made by 2:00pm on the date of the event. Guide dogs are not recommended for this event.



Virtual Bingo

Wednesday, January 7th & 21st

Time: 6:00pm-8:30pm

You are invited to a virtual Bingo game! You can use your own large print Braille and embossed card or provide the numbers of your own card. You can also request a PDF card to be emailed to you that can be printed. Only ONE CARD can be played per person and your card MUST be registered with activity director.

Notes: The Last Number Called rule will be enforced. There are cash prizes. No need to sign up, just join using the Zoom sign in which will be provided.

Snow Tubing

Saturday, January 10th

Time: 10:00am - 3:00pm

The hill has 45+ chutes to soar down the quarter mile run with speeds up to 30 mph. They put a sleeve around the tube, so you have a bottom to sit on along with handles on each side. There is a rope attached to the tube so you can pull the tube along with you. There is no need to trek back up the hill for your next run. They have two magic carpet lifts which will bring you up the hill while standing with the tube behind you. We will go for lunch after tubing at 12:30pm. We will be back in Milwaukee area by 3:00pm.

Physical requirements: This event requires a fair amount of physical endurance, and we would like to have a 1 to 1 VIP to guide ratio. Your help is appreciated by arranging your own guide.

Event Specific Requirements: Dress for cold conditions in layers with no cotton next to the skin, wicking material is preferred. Don't forget to wear a hat and gloves.

Notes: Guide dogs are not recommended for this event.

If you have any questions call Kevin Meyers, Outreach director at 414-839-0635.

ILLEGALLY PARKS CARDS

You are ILLEGALLY PARKED!

[@MKECoOPD](#)

The Milwaukee County Office for Persons with Disabilities (OPD) has a supply of these cards. If you'd like some, please contact Jacqueline Formanek at 414-278-3938 or email jacqueline.formanek@milwaukeecountywi.gov with your complete name and mailing address.





TRANSIT PLUS

MILWAUKEE COUNTY PARATRANSIT SERVICES

WisGo is coming to Transit Plus!

Beginning January 5, 2026, you can load money and pay for your Transit Plus ride with your WisGo card. To pick up your new Transit Plus ID WisGo card and learn more about it, attend an open house event:

MCTS Administration Building

- Tuesday January 6, 2026 9:00 AM - 12:00 PM
- Wednesday January 7, 2026 1:00 PM - 3:00 PM

Marcia P. Coggs Health and Human Services Center Room 104

- Wednesday January 7, 2026 9:00 AM - 12:00 PM

Independence First

- Thursday January 8, 2026 1:00 PM - 3:00 PM

Kelly Senior Center

- Tuesday January 13, 2026 10:00 AM - 12:00 PM

Clinton Rose Senior Center

- Wednesday January 14, 2026 10:00 AM - 12:00 PM

Washington Park Senior Center

- Thursday January 15, 2026 10:00 AM - 12:00 PM

Wilson Park Senior Center

- Friday January 16, 2026 10:00 AM - 12:00 PM



If you cannot attend one of the events listed, no worries! Expect to receive your card by mail in early February. Be sure Transit Plus has you up-to-date address, so you don't miss out!

Visit the Transit Plus website to learn more!

For ADA accommodations call 414-343-1700 one week prior to attendance.



TRANSIT PLUS
MILWAUKEE COUNTY PARATRANSIT SERVICES

WisGo



TRANSIT PLUS

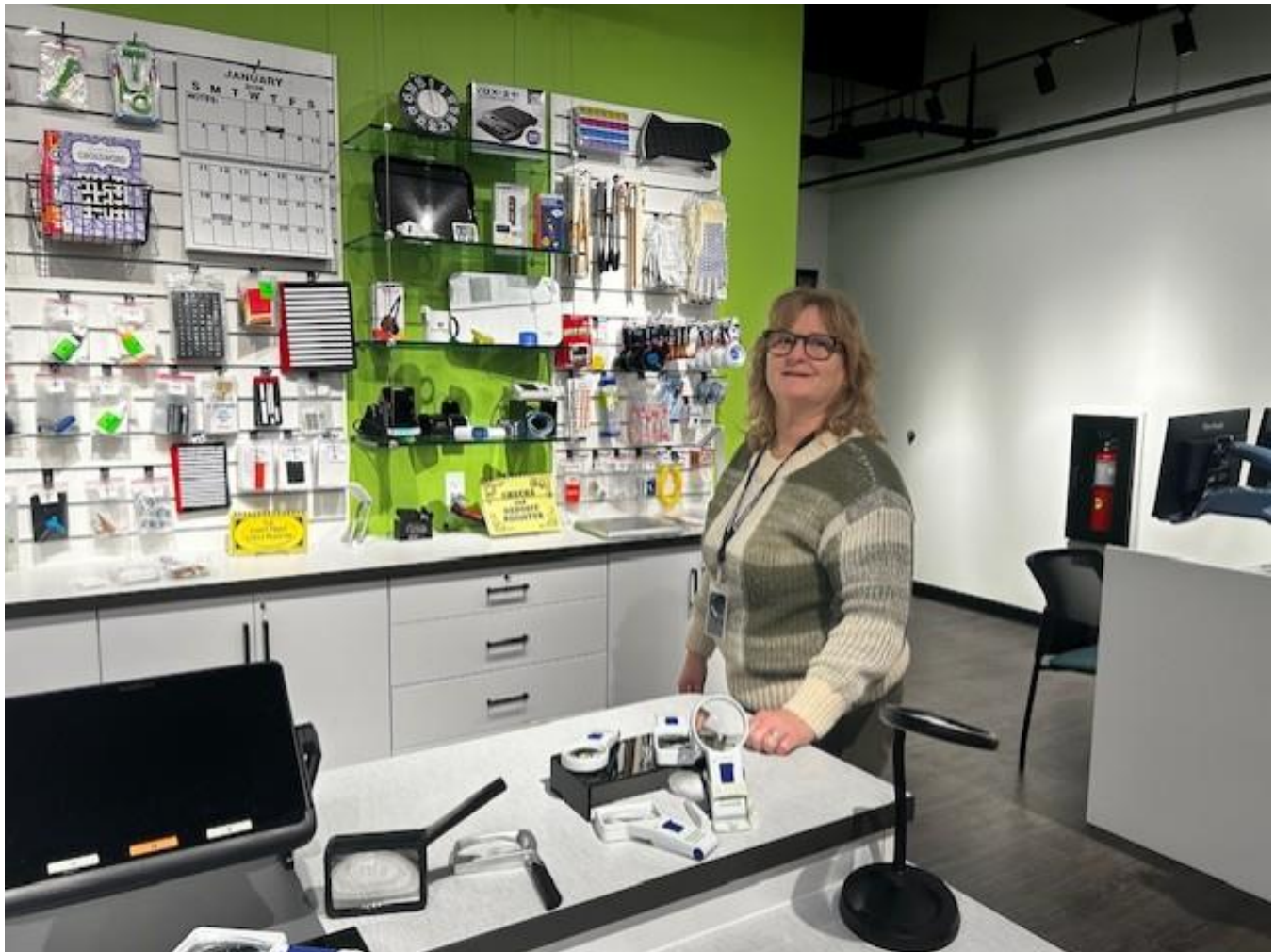
MILWAUKEE COUNTY PARATRANSIT SERVICES



Need to apply for service or renew your paratransit eligibility?

The Transit Plus application and medical verification form can now be submitted online. Check out this convenient new option on ridemcts.com/accessibility/transitplus/application-process.

"Vision Forward is now settling into the new location. Our store is fully stocked, freshly organized, and Mary is ready to help you find the perfect magnifier or bump dots to help support your independence. We can't wait to welcome you at 10150 W National Avenue, Ste 100, West Allis, 53227."





MILWAUKEE COUNTY TICKET PROGRAM

ADMIRALS TICKET REQUEST FORM January 2026

Please complete this form and return it *along with a self-addressed STAMPED envelope to:*
Tickets, Milwaukee County Office for Persons with Disabilities, 1220 W. Vliet Street, Suite 302L, Milwaukee WI 53205.

[Email Ticket Requests are also accepted.](#)
 jacqueline.formanek@milwaukeecountywi.gov

Ticket requests will be limited as follows:

ADMIRALS – Individuals with Disabilities = 4 tickets per game (Max); **Organizations** = 4 tickets per game (Max).

LIMITED TO 2 "FREE" GAMES PER MONTH!

*The ticket program has a limited number of FREE tickets for each game!
 Additional games, beyond the 2 FREE games can be had at \$10 per ticket while supplies last.*

		Number of Tickets (4 Max)				Place an X	
		W/C	Comp	LM	Reg	\$10	Free
X = Confirmed (Office Use Only)	January 8th, Manitoba, 7pm						
	January 13th, Griffins, 7pm						
	January 16th, Wolves, 7pm						
	January 24th (limited ADA seating available), Wild, 6pm						
	January 27th, Rockford, 7pm						

W/C = Wheelchair Platform Seating
 Comp = Companion
 LM = Limited Mobility Aisle Seats
 Reg = Regular Seating

Payment By Credit Card Only! – (Please circle appropriate card)

Mastercard Visa American Express

Acct. # _____

Exp. Date: _____

Name: _____

Organization: _____

W-O-W Card No.: _____

Address: _____

City: _____ State: _____ Zip: _____

Primary Phone: _____

Special Needs: _____



PRIVATE PARTY RENTALS

Looking to book your next family gathering or community-group event? Weddings, family reunions, birthday parties, graduations, showers, organizational meetings, are among the many events held here each year. Both Wil-O-Way facilities are in beautiful Milwaukee County parks. The buildings are accessible and have a large hall and kitchen. The spacious grounds have picnic tables, walking trails, wading pools, and accessible playgrounds.

BOOK AN EVENT NOW!

Current Capacity 180 people

Check out the [Facility Guidelines](#) & [Facility Rentals Calendar](#).

Wil-O-Way Grant (South Milwaukee)



Wil-O-Way Underwood (Wauwatosa)



SHARE HANDY NEWS & NOTES!

Do you work with someone or know someone who would be interested in or would benefit from the information in Handy News & Notes? If so, please refer them to the link below to sign up for this FREE information source.

<https://county.milwaukee.gov/EN/Sign-Up-for-E--Notify>

OFFICE FOR PERSONS WITH DISABILITIES (OPD)



Director: Jacqueline Formanek

- Marcia P. Coggs Human Services Center • 1230 W Cherry St • Milwaukee County 53205
- (414) 239-5679 • 711 (TRS)

[Office Persons with Disabilities Website](#)