

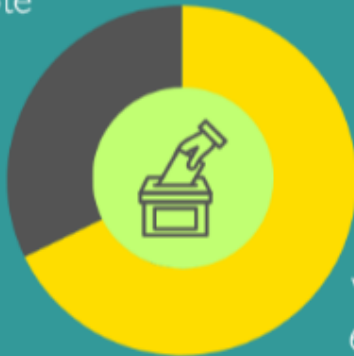
Civic Participation

Civic Participation Index

Voter Turnout Rate 2020 Election

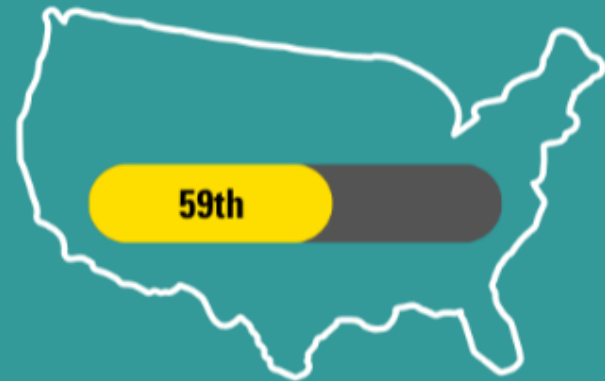
VOTER TURNOUT

Did Not Vote
32.2%



Voted
67.8%

Milwaukee County

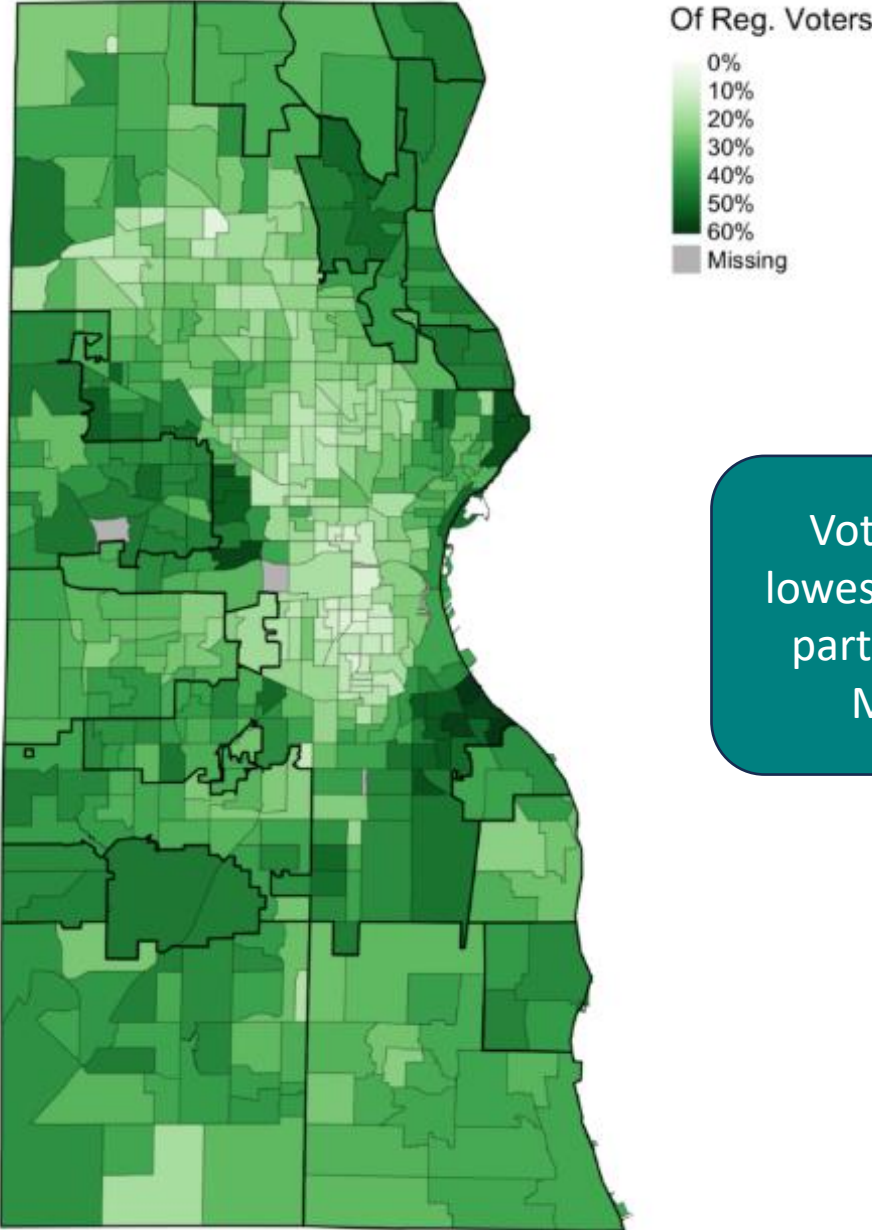


National Percentile Rank

Information Futures Lab, Brown University. (2024). Data Sources. Retrieved from The Civic Information Index: <https://civicinfoindex.org/the-index/#Data>

Milwaukee County's voter turnout rate is above the national average.

Voter Turnout: Spring 2024 Election

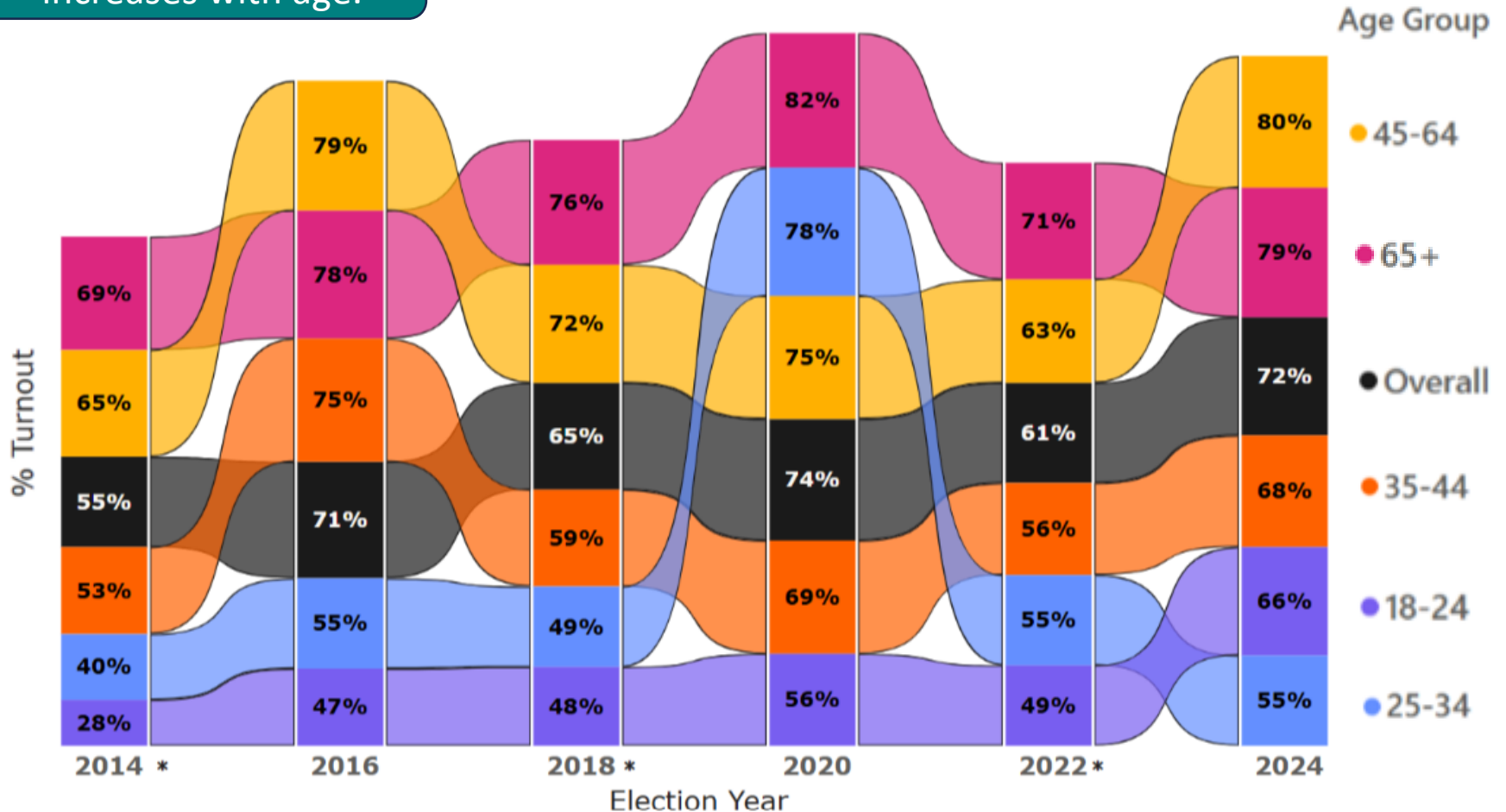


Voter turnout is lowest in the central part of the City of Milwaukee.

Voter Turnout

% Turnout by Age Group (Wisconsin)

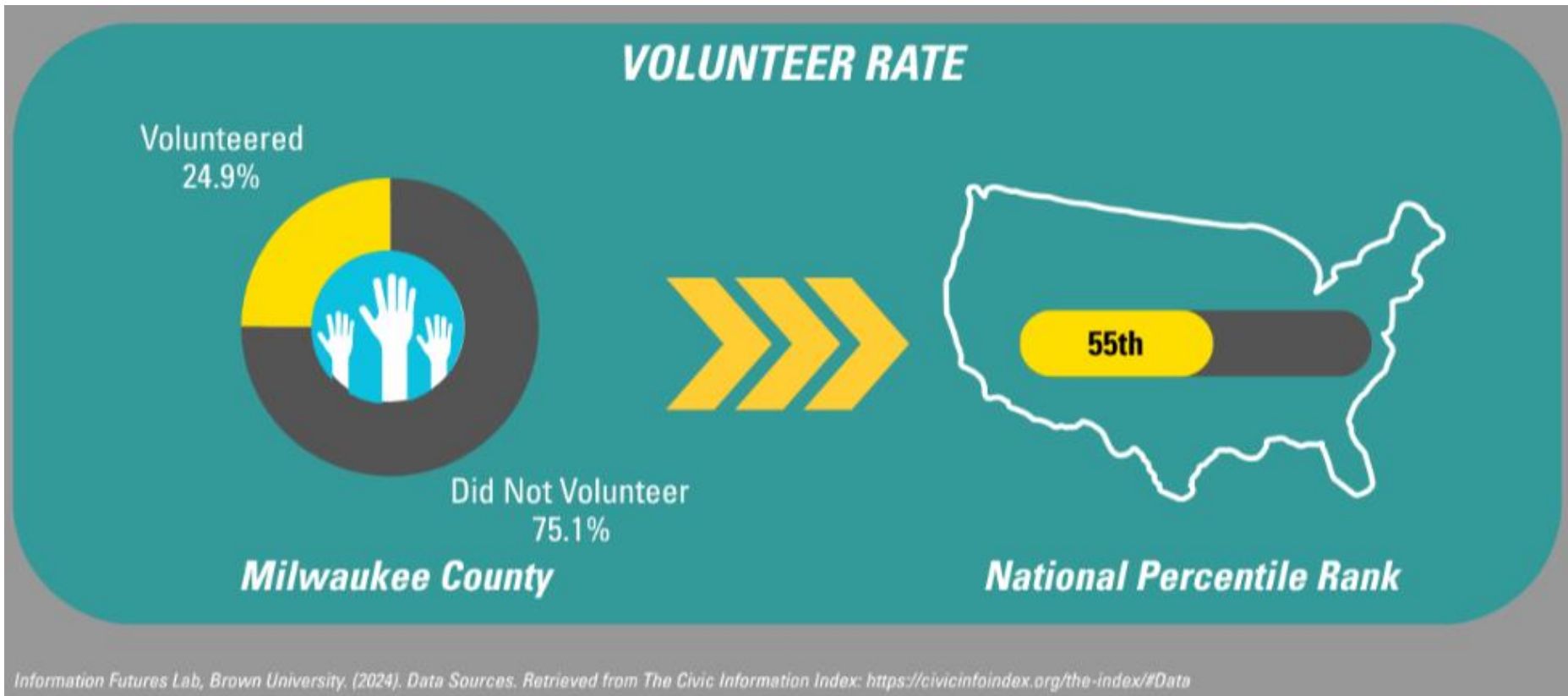
Voter turnout generally increases with age.



*Mid-terms

Civic Participation Index

Volunteer Rate



Milwaukee County's volunteer rate is above the national average.

Civic Participation Index

Charitable Contribution Rate

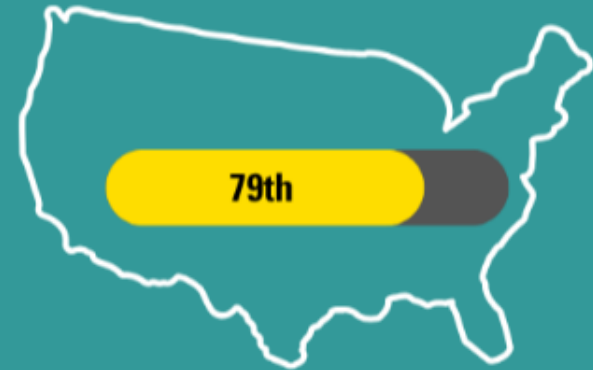
CHARITABLE CONTRIBUTIONS

% of Adjusted Gross Income (AGI)

1.3% Contributions



Milwaukee County



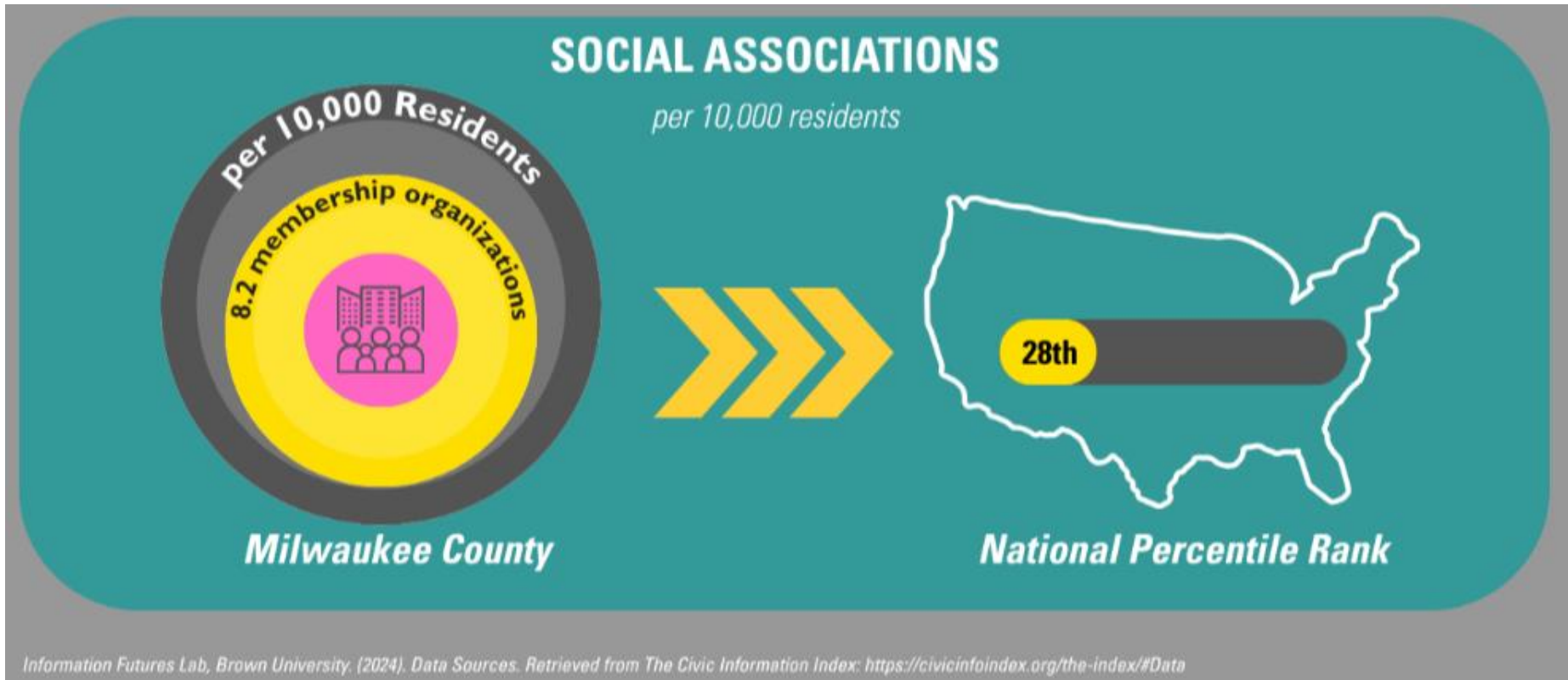
National Percentile Rank

Information Futures Lab, Brown University. (2024). Data Sources. Retrieved from The Civic Information Index: <https://civicinfoindex.org/the-index/#Data>

Milwaukee County's rate of charitable giving is well above the national average.

Civic Participation Index

Social Associations per 10,000 Residents



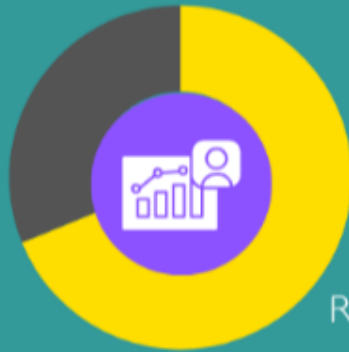
Milwaukee County's rate of social/membership organizations is above the national average.

Civic Participation Index

Census Response Rate

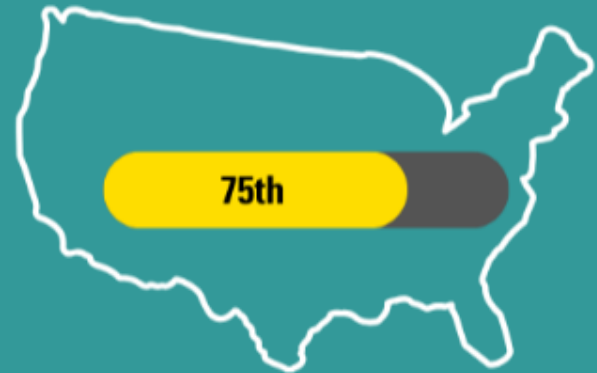
CENSUS RESPONSE RATE

Did Not Respond
31.2%



Responded
68.8%

Milwaukee County



National Percentile Rank

Information Futures Lab, Brown University. (2024). Data Sources. Retrieved from The Civic Information Index: <https://civicinfoindex.org/the-index/#Data>

Milwaukee County's census response rate is well above the national average.