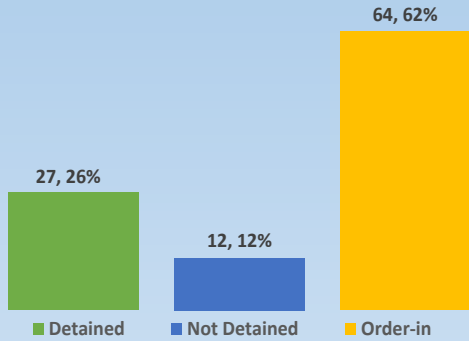




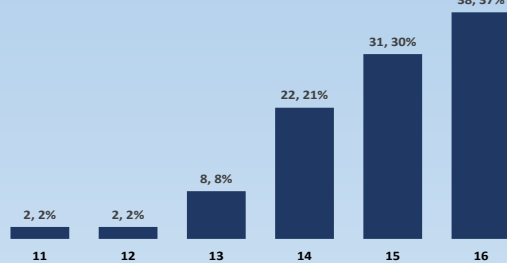
# DYFS Monthly Data Blast

February 2021

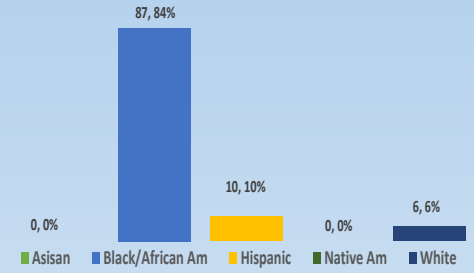
## February Referrals (Total 103)



## February Referrals by Age



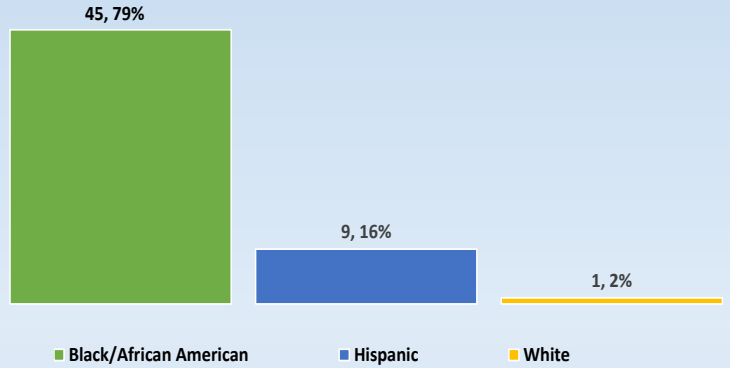
## February Referrals by Race/Ethnicity



## Detention Admissions—February

Monthly Detentions	#
Admissions	55
Discharges	65
Average Length of Stay	49.8 Days

## Detention Admissions—Race/Ethnicity



## Detention Risk Assessment Instrument (DRAI)

DRAIs Completed	68	
DRAI Overrides	9	13.2%

## Youth on Supervision

Supervision Type	#
Consent Decree	61
Courtesy Supervision	4
Deferred Prosecution	30
JIPS Supervision	8
Probation	264

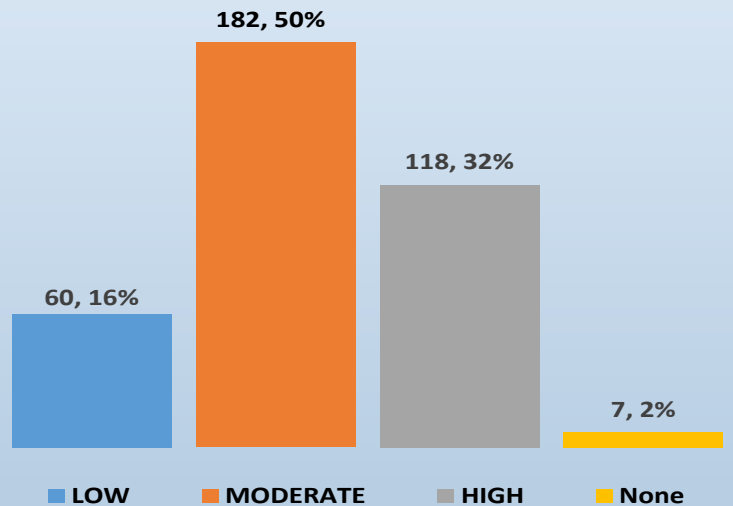
**Grand Total 367**

## Active Wraparound Youth

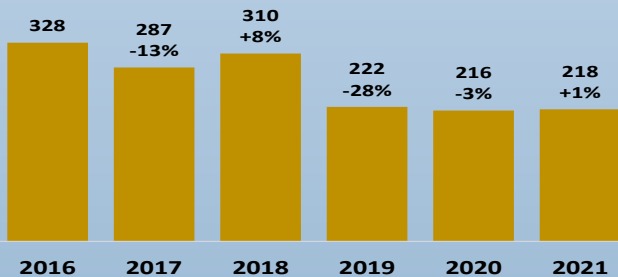
Wraparound Type	#
Wraparound-Home/ Legal Guardian	52
Wraparound-Out of Home Care	52

**Total 104**

## Youth on Supervision by Overall Risk Level



## Y-T-D Referral Comparison



## Corrections Admissions/Active Youth

	Adm	LHS	CLS	Mendota	Aftercare
Regular	4	17	1	5	15
SJO	0				

**Youth Waived: 2**