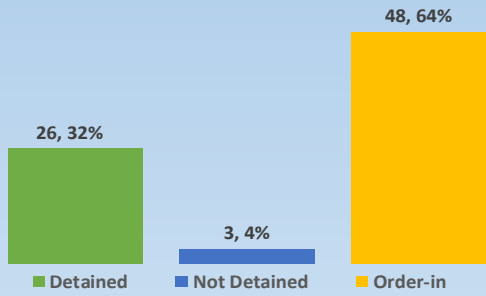




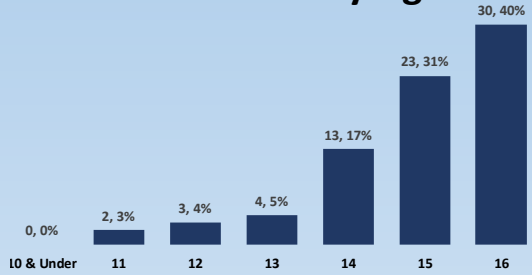
# DYFS Monthly Data Blast

**June 2020**

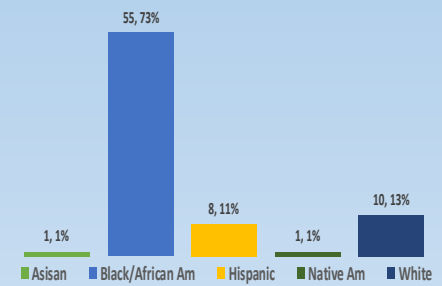
## June Referrals (Total 75)



## June Referrals by Age



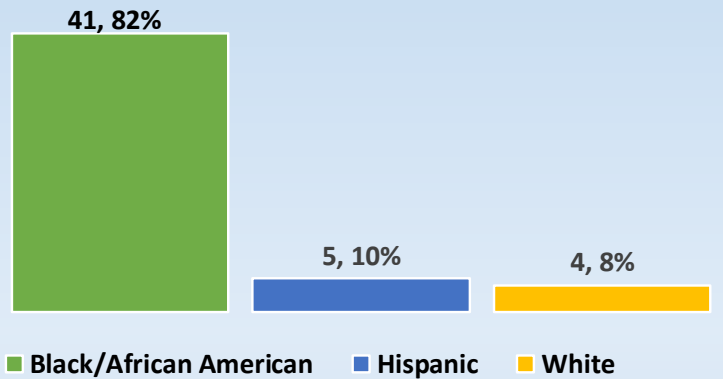
## June Referrals by Race/Ethnicity



## Detention Admissions

Monthly Detentions	#
Admissions	50
Discharges	55
Average Length of Stay	44.4 Days

## Detention Admissions—Race/Ethnicity



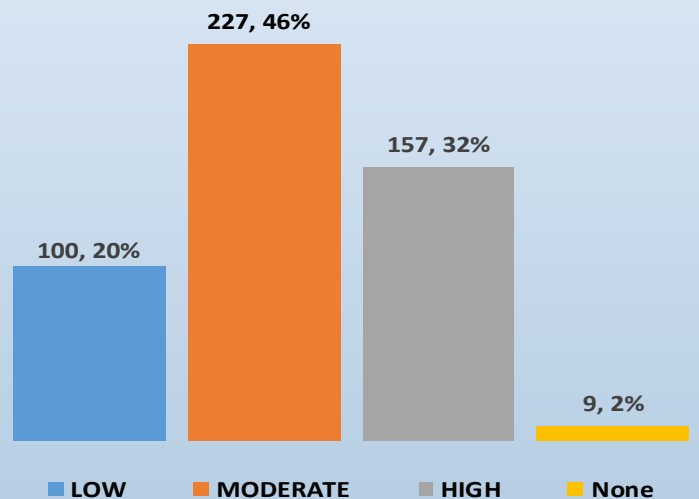
## Detention Risk Assessment Instrument (DRAI)

DRAIs Completed	54	
DRAI Overrides	1	1.9%

## Youth on Supervision

Supervision Type	#
Consent Decree	91
Courtesy Supervision	5
Deferred Prosecution	40
JIPS Supervision	13
Probation	344
<b>Grand Total</b>	<b>493</b>

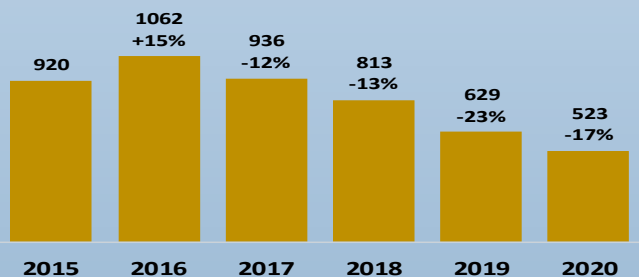
## Youth on Supervision by Overall Risk Level



## Active Wraparound Youth

Category	#
Wraparound-Home/ Legal Guardian	67
Wraparound-Out of Home Care	76
<b>Total</b>	<b>143</b>

## Y-T-D Referral Comparison



## Corrections Admissions/Active Youth

	Adm	LHS	CLS	Mendota	Aftercare
Regular	4	23	2	3	18
SJO	3	17	0	5	33

Youth Waived: 0