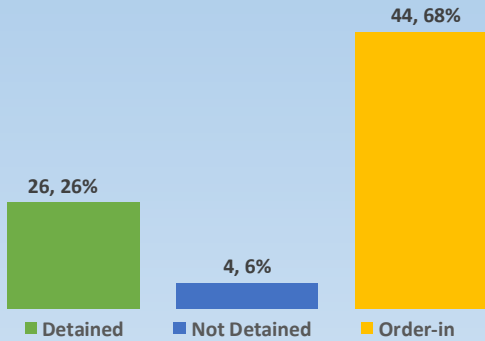




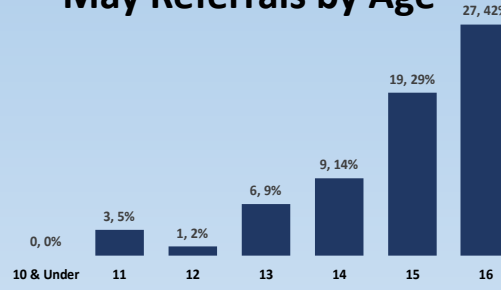
# DYFS Monthly Data Blast

**May 2020**

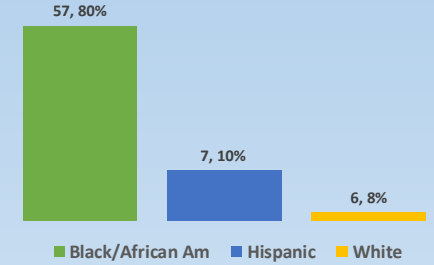
## May Referrals (Total 65)



## May Referrals by Age



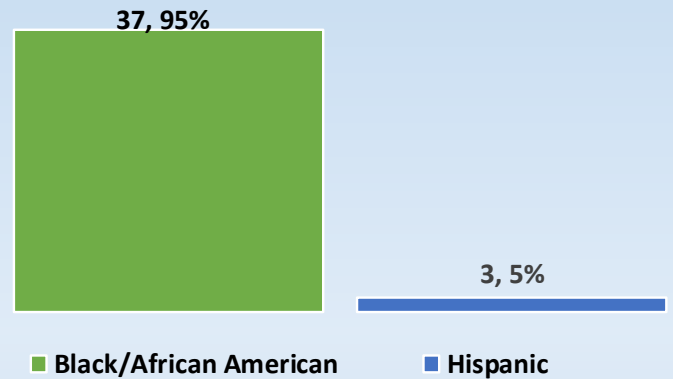
## May Referrals by Race/Ethnicity



## Detention Admissions

Monthly Detentions	#
Admissions	39
Discharges	38
Average Length of Stay	32.9 Days

## Detention Admissions—Race/Ethnicity



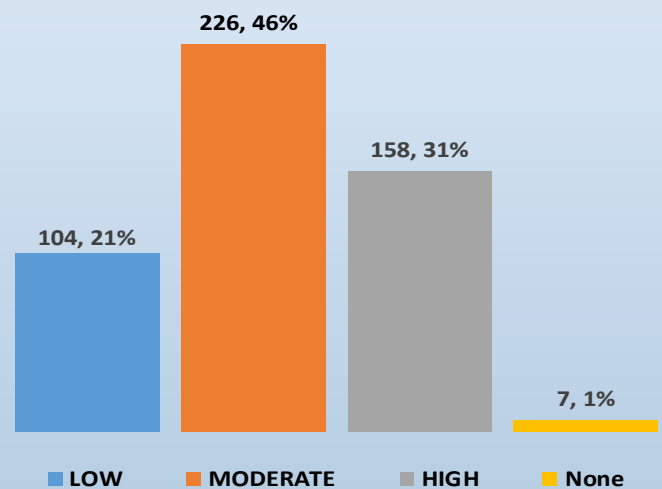
## Detention Risk Assessment Instrument (DRAI)

DRAIs Completed	43	
DRAI Overrides	2	4.7%

## Youth on Supervision

Supervision Type	#
Consent Decree	90
Courtesy Supervision	4
Deferred Prosecution	44
JIPS Supervision	14
Probation	337
<b>Grand Total</b>	<b>489</b>

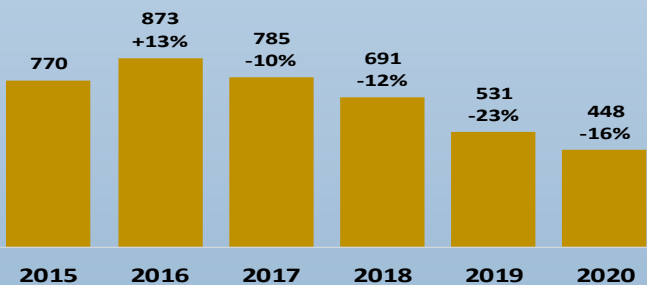
## Youth on Supervision by Overall Risk Level



## Active Wraparound Youth

Wraparound Type	#
Wraparound-Home/ Legal Guardian	70
Wraparound-Out of Home Care	75
<b>Total</b>	<b>145</b>

## Y-T-D Referral Comparison



## Corrections Admissions/Active Youth

	Adm	LHS	CLS	Mendota	Aftercare
Regular	2	26	2	4	16
SJO	1	19	0	5	31

Youth Waived: 0