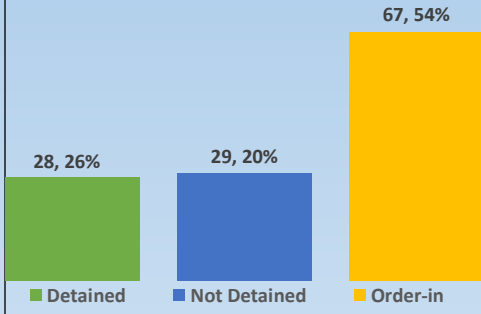




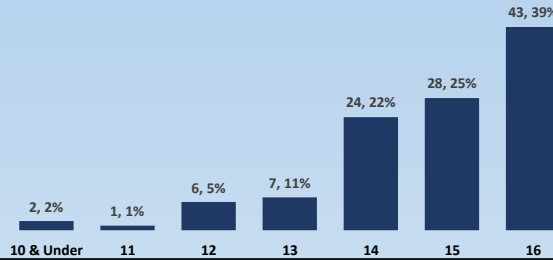
# DYFS Monthly Data Blast

**January 2020**

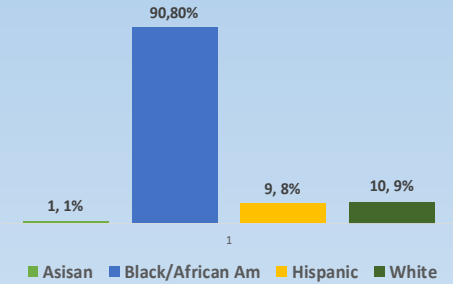
## January Referrals (Total 111)



## January Referrals by Age



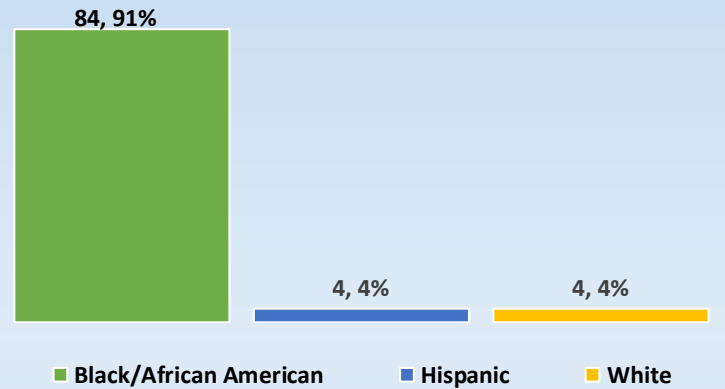
## January Referrals by Race/Ethnicity



## Detention Admissions

Monthly Detentions	#
Admissions	92
Discharges	90
Average Length of Stay	15.5 Days

## Detention Admissions—Race/Ethnicity



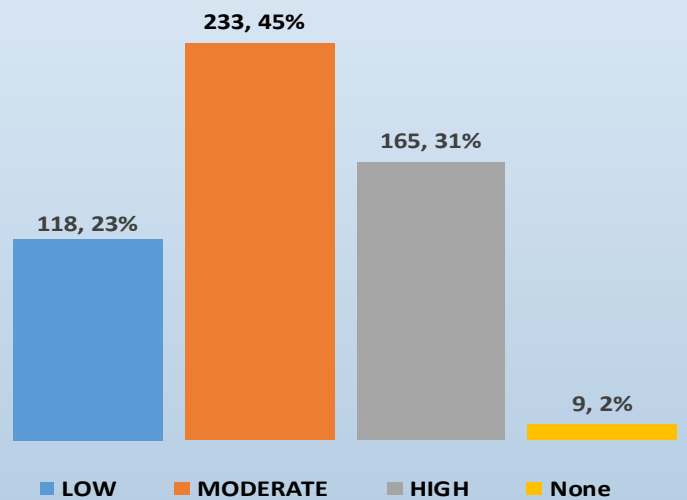
## Detention Risk Assessment Instrument (DRAI)

DRAIs Completed	105	
DRAI Overrides	11	10%

## Youth on Supervision

Supervision Type	#
Consent Decree	76
Courtesy Supervision	8
Deferred Prosecution	56
JIPS Supervision	23
Probation	360
<b>Grand Total</b>	<b>523</b>

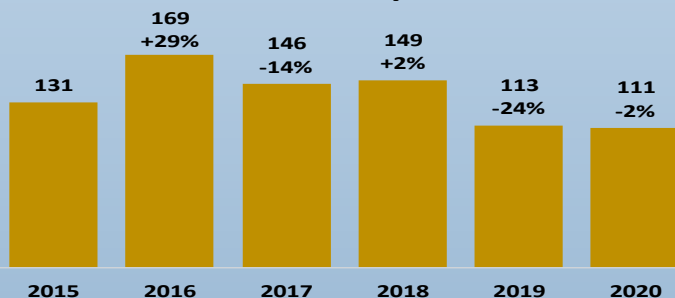
## Youth on Supervision by Overall Risk Level



## Active Wraparound Youth

Wraparound Type	#
Wraparound-Home/ Legal Guardian	59
Wraparound-Out of Home Care	79
<b>Total</b>	<b>138</b>

## Y-T-D Referral Comparison



## Corrections Admissions/Active Youth

	Adm	LHS	CLS	Mendota	Aftercare
Regular	4	31	3	5	17
SJO	0	20	1	4	32

Youth Waived: 0