

# Milwaukee County-Behavioral Health Services: Children's Community Mental Health Services and Wraparound Milwaukee System of Care

## Milwaukee County Mental Health Clinic

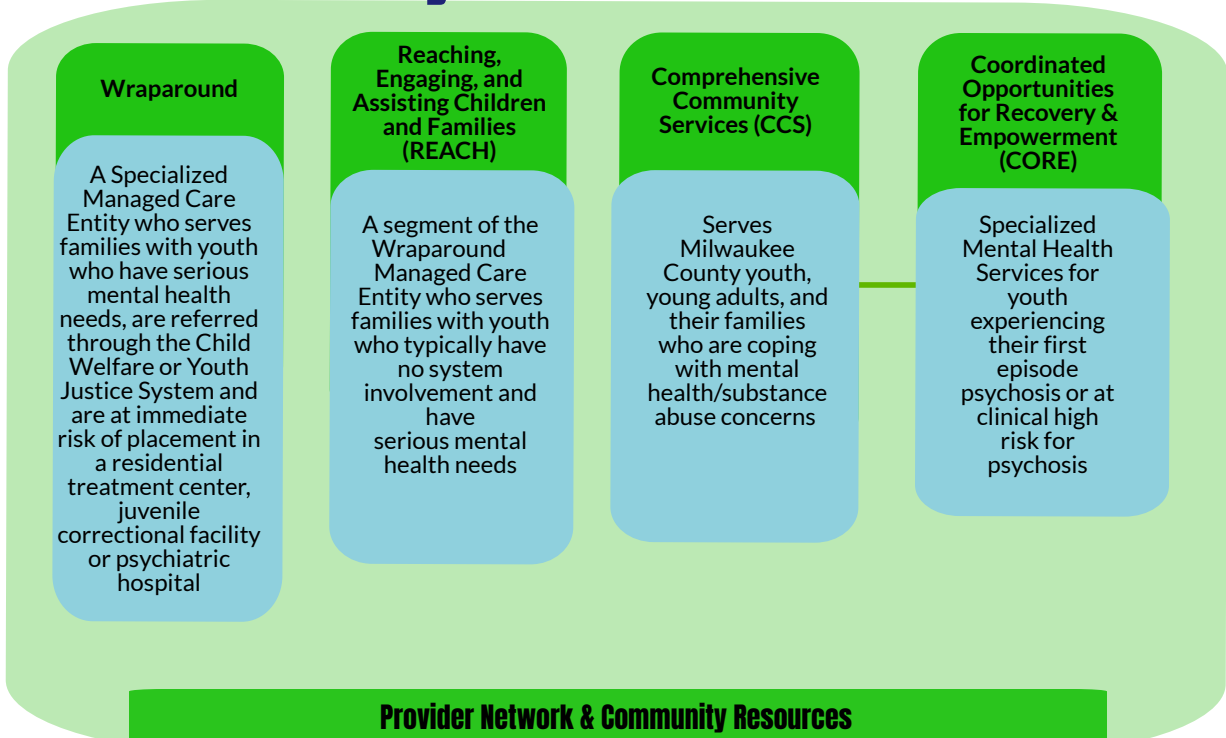
Provides medication management and wellness/education services

## MKE Mobile Crisis

Crisis services for youth & families of Milwaukee County

## Trauma Response Team (TRT)

In collaboration with MPD, support services are provided for children & families affected by violent trauma



## Family Advocacy

Provides family support, advocacy, services, training, support groups and family events for families of Milwaukee County

## Educational Liaisons

Provides educational support to youth and young adults. Addresses issues including school placement, special education needs & services and possible suspensions and expulsions

## Youth Crisis Stabilization Facility (YCSF)

Facility available to girls ages 13-17, who are experiencing a mental health crisis

## Owen's Place

A community drop-in Resource Center for young adults whose mental health needs may have an impact on their independence. Youth advocacy and leadership skill development for youth to make a difference in the community

## RE-SOURCE EXTENSION

Technical Assistance offered to Wraparound and other Mental Health programs that includes: training, workforce and leadership development, program development, QA/QI, sustainable funding models, and System of Care expansion

# Milwaukee County-Behavioral Health Services: Children's Community Mental Health Services and Wraparound Milwaukee System of Care

Children's Community Mental Health Services and Wraparound Milwaukee is the Behavioral Health Service's entity that manages the public sector, community-based mental health system for children, adolescents and young adults (ages 5-23) in Milwaukee County who have serious mental health or emotional needs. Serving as the umbrella body for a number of programs, all programs rely on care coordination, offer a range of support services, and promote parental and youth choice, family independence, and provide trauma informed care for children and youth in the context of their family and community.

**Wraparound** – Referrals are received from Youth Justice and Child Welfare for those youth who are at imminent risk for out of home care. It provides cost-effective, community-based alternatives to residential treatment placements, youth correctional placements, and psychiatric hospitalization.

**Reaching, Engaging and Assisting Children & Families (REACH)** – Referrals come directly from families, schools, service providers and Mobile Crisis. Youth generally are not involved in the Youth Justice or Child Welfare systems. Under the same practice model, youth and families receive the same type of supports and services as those in Wraparound program, with the exception of placement services.

**Comprehensive Community Services (CCS)** – An option for families in Milwaukee County which provides support and services to youth and young adults who are coping with either a mental health and/or substance abuse diagnosis. CCS addresses needs throughout a person's lifespan, with a coordinated and comprehensive array of recovery, treatment and psychosocial rehabilitation services.

**Coordinated Opportunities for Recovery and Empowerment (CORE)** – Funded by CCS, serves 10-23 year olds who are clinically high risk for psychosis, or who are experiencing their first episode with psychosis. Services included: Care Coordination, Individual Therapy, Employment and Education Support, Peer Support and Medication Management.

**Milwaukee County Mental Health Clinic** – Provides medication management and overall wellness care and education for the mental and physical health of children and youth in the Wraparound Milwaukee System of Care.

**Owen's Place** – A community drop-in resource center for young adults ages 16- 24 whose mental health needs may be impacting their ability to become independent. Empowering young adults to advocate for themselves around causes that are important to them and their respective community. Please visit us at our two locations:

- 4610 West Fond Du Lac Ave.
- 504 West National Ave.

**MKE Mobile Crisis** – Provides 24/7 crisis intervention services to any family in Milwaukee County with a child who is experiencing a mental health emergency in which the behavior of the child threatens their removal from home, a community placement and/or, school.

**Trauma Response Team (TRT)** – In collaboration with the Milwaukee Police Department, provides support services to children & their families when they have witnessed or have been exposed to potentially traumatic events such as serious accidents, sudden death, shootings, violence, or domestic violence.

**Youth Crisis Stabilization Facility (YCSF)** - During their short-term stay, youth will receive therapeutic services, recreation, life skills support, and transitional case management. The YCSF staff coordinate school attendance in person or virtually for the youth in their care to ensure no educational disruption.

**Family Advocacy Services** – Run by families with lived experience, this could include family support, advocacy services, family-run support groups, and family events. They also train providers and are the voice of families on committees and in the community.

**Educational Liaisons** – Serves youth and young adults involved in Children's Community Mental Health Services and Wraparound Milwaukee System of Care. Addresses school issues including placement, special education needs and services and possible suspensions and expulsions.

**Provider Network & Community Resources** – Children's Community Mental Health Services and Wraparound Milwaukee has a broad benefit plan of over 100 different mental health, social and supportive services. This network of community agencies and individual providers provides a variety of options for every service type, giving families considerable choice for their child and their family. Services may include psychiatry, therapy, crisis stabilization, professional foster parent, skill development, and resources available in the community.

**RE-SOURCE EXTENSION** - Technical Assistance offered to Children's Community Mental Health Services and Wraparound Milwaukee System of Care and other Mental Health programs. This includes: training, workforce and leadership development, program development, QA/QI, sustainable funding models, and System of Care expansion. To schedule a site visit, request training or consultation, or speak to someone about ways we can support your agency in service to youth and young adults, please email: [resourceextension@milwaukeecountywi.gov](mailto:resourceextension@milwaukeecountywi.gov) or check out the RE-Source Extension tab on our website: <https://county.milwaukee.gov/EN/DHHS/BHD/Childrens-Community-Mental-Health-Services>

To visit the Children's Community Mental Health Services and Wraparound Milwaukee website, please scan the QR Code:

