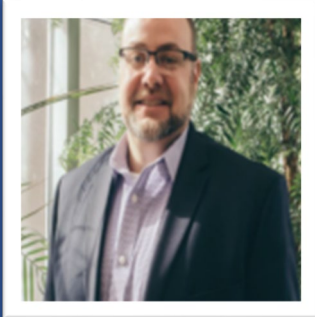
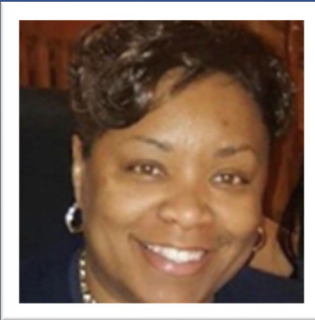


# Meet the Re-Source Team



Brian McBride, Director. I am responsible for all program operations, growth, and compliance. Our system of care has been leading, innovating, and advancing mental health service delivery for youth across the country. We continue to look for ways to lead practice change that ensures better outcomes for families and sustainable success for those we serve.



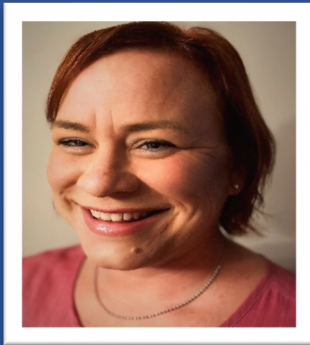
Rashaan Cherry, Integrated Services Manager- SOC and interim Deputy Director. I manage \$4M grant portfolio, grant compliance and fiscal oversight, ensure sustainability of grant funded programs, and oversee the TRT program. I do this work because I grew up in Milwaukee within some of the most impoverished zip codes, and I have experienced many of the same struggles and challenges as the families that we serve. For that reason alone, I feel as if it is my God given ministry to help others by being at the table assisting in the creation of resources and services that better the community I grew up in and still live in.



Dana James, Integrated Services Manager of Quality Assurance. I oversee the Quality Assurance/Improvement and Evaluation of the Wraparound Milwaukee System of Care. My department oversees Policy and Procedures, Critical Incidents, Client Rights, Performance Measures, Performance Improvement Projects, Auditing, Client Experience/Satisfaction, and more. I have been with Wraparound Milwaukee in some capacity since 2007 (from Care Coordination, to Supervisor, to Screener, to Quality Assurance). Outside of work, I coach volleyball, love anything sports related, and enjoy playing cards with my family.



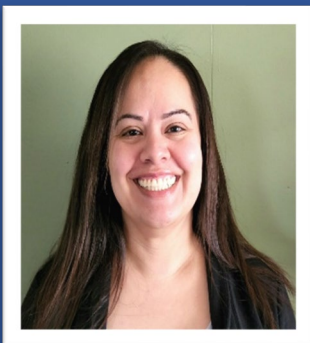
Jill L. Clopper, Lead Family Support and Certified Parent Peer Support. I use my lived experience, as a parent of a young person with mental health challenges, to offer hope and encouragement to other parents and caregivers. I can be a listening ear and a connection to resources. I am a parent of 6, 3 of whom are adopted. I enjoy reading, traveling and spending time with my family.



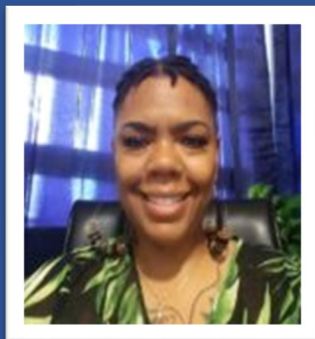
Dr. Abby Noack-Haggas, Psychologist: I am a member of the Wraparound clinical team. I worked for six years as the psychologist on the former child/adolescent inpatient unit at BHS. I love working with youth and am particularly interested in working with trauma, attachment, and helping youth achieve safety within themselves and in their daily lives. I am a big believer in a values-focused approach and in keeping a pragmatic lens on problem-solving that meets families where they are at, while simultaneously planting seeds for positive change. I also am trained in the treatment of sexually abusive or damaging behaviors perpetrated by youth. I am a mom of three young kids, several pets, and love to read, crochet, cook, and walk.



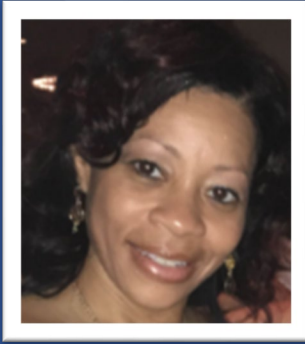
Stephen Gilbertson, Clinical Director. I'm a licensed psychologist and, as a 3 decade veteran of Wraparound Milwaukee & clinical director, I've had many wonderful experiences. My most frequent interaction with care coordinators now consists of clinical consultation specific to youth who've engaged in some form of risky behavior. I look forward to speaking with you.



Maria Castillo, Outreach Coordinator. I promote SOC programs through outreach, networking, presentations, and events. I have been a part of Wrap for 17+ years as a Provider, Care Coordinator, and Screener. I enjoy working with community partners to exchange information/resources and talk about First Episode Psychosis, and am skilled at engaging youth in CORE. I also lead the Grab & Go events. I believe families deserve access when they need help to avoid system involvement, and we should do what we say we do. My daughter is involved in competitive swim, track, cross country and plays the trumpet; I support the swim team and band booster clubs.



Rhoda Jordan, Coach/Trainer. I train and coach new CCs and am the missing from care consultant. I do what I love, serving as a coach/trainer helping to develop a strong workforce committed to helping heal families and communities. I am passionate about empowering families through a lens of compassion, equity and justice. I have worked to support and advocate for underrepresented students in many school districts as the As. Director of Diversity Programs and as the Youth Racial Justice Coordinator with the YWCA.



Verneesha Banks, Coach/Trainer. I am responsible for providing training, consultation, and ongoing coaching support to Care Coordinators. I bring 23 years of experience working with children and families involved in the mental health system. I am also a treatment foster/adoptive parent of 22 years, and have adopted 7 children and have 4 biological children. I am a dedicated advocate for family rights and have trained nationally on the Wraparound process.



For more information or to discuss TA services, please email [Rashaan.cherry@milwaukeecountywi.gov](mailto:Rashaan.cherry@milwaukeecountywi.gov)