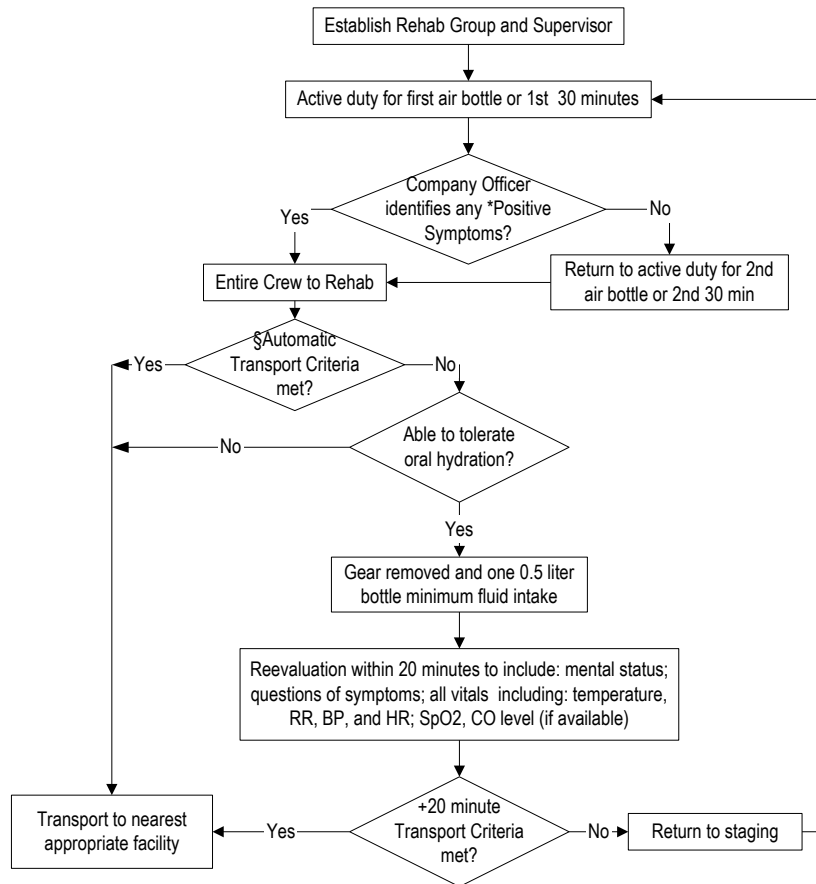


Initiated: 2/27/02  
 Reviewed/revised: 7/1/11  
 Revision: 2

**MILWAUKEE COUNTY EMS  
 STANDARD OF CARE  
 EMERGENCY INCIDENT  
 REHABILITATION**

Approved by: Ronald Pirrallo, MD, MHSA  
 Page 1 of 1



**Transport Criteria Based on ALS Evaluation of Signs or Symptoms**

<b>*Positive Symptoms</b>	<b>§Automatic Transport Criteria</b>	<b>+20-Minute Transport Criteria</b>
<ul style="list-style-type: none"> <li>• Headache</li> <li>• Dizziness</li> <li>• Nausea/vomiting</li> <li>• Vision abnormalities</li> <li>• Paresthesias (numbness and/or tingling)</li> </ul>	<ul style="list-style-type: none"> <li>• Chest pain</li> <li>• Confusion</li> <li>• Shortness of breath</li> <li>• Palpitations or irregular heart beat sensations</li> </ul>	<ul style="list-style-type: none"> <li>• Any Automatic Transport Criteria</li> <li>• Any Positive Symptoms</li> <li>• HR 120 or greater</li> <li>• SBP 200 or greater <b>OR</b> 90 or less</li> <li>• T101 or greater <b>OR</b> 97 or less</li> <li>• RR 30 or greater</li> <li>• CO level greater than 10%</li> <li>• SpO<sub>2</sub> level less than 94</li> </ul>

**NOTES:**

- After the first air bottle, the entire crew must report to rehab if any member reports positive symptoms. Symptomatic crewmembers must remain in rehab; other nonsymptomatic crewmembers are to report as directed by Group Supervisor.
- The Incident Safety Officer is responsible for assessment of the Company Officer for positive symptoms.
- Document according to department standards: date and incident identifier; names of personnel triaged; entrance and exit times; all vital signs documented; injuries and/or symptoms; disposition.
- Rehydration should continue after the incident with additional 1–2 liters consumed over the next 4 hours.