

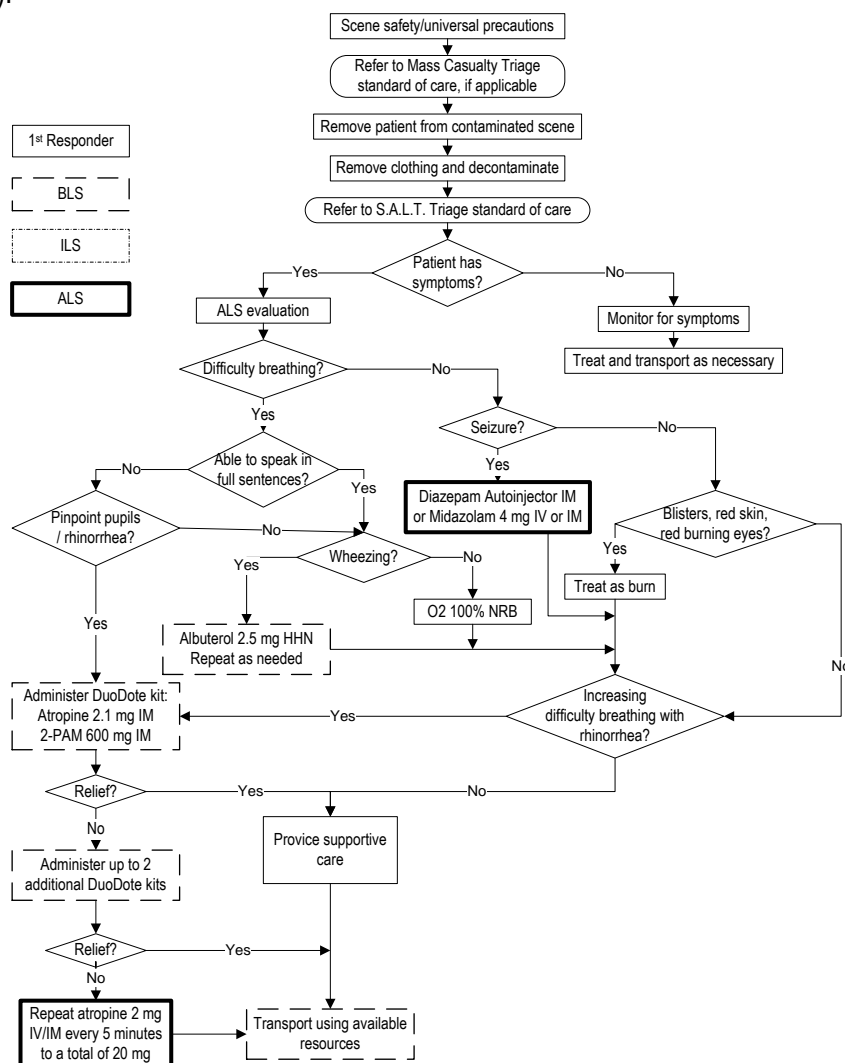
Initiated: 5/14/03  
 Reviewed/ revised: 7/1/11  
 Revision: 3

**MILWAUKEE COUNTY EMS  
 MEDICAL PROTOCOL  
 CHEMICAL EXPOSURE**

Approved by: Ronald Pirrallo, MD, MHSA  
 WI EMS Approval Date: 6/22/11  
 Page 1 of 1

History	Signs/Symptoms	Working Assessment
Known chemical exposure Multiple patients with similar symptoms (e.g. seizures)	Salivation (drooling) Lacrimation (tearing) Urination Defecation (diarrhea) Generalized twitching/seizures Emesis (vomiting) Miosis (pinpoint pupils)	Exposure to nerve agents or organophosphates (e.g. insecticides)

This is intended to be used only in cases of possible exposure to nerve agents or other organophosphates (e.g. insecticides).



**NOTES:**

- If symptoms of SLUDGEM appear, the first step is to remove the patient from the contaminated area as quickly as possible. This is often the only treatment needed.
- If vapor exposure alone, no need for skin decontamination.
- Administration of atropine is indicated only if there is an increasing difficulty breathing (inability to speak in full sentences) and rhinorrhea. If miosis alone, do not administer atropine.
- A total of three DuoDote kits may be administered to a single patient.
- Premature administration of the DuoDote kit poses a higher risk of death due to atropine-induced MI