



# Patricia Jursik **Update**

8<sup>th</sup> District Milwaukee County Supervisor Patricia Jursik  
901 N. 9<sup>th</sup> Street , Courthouse RM 201, Milwaukee, WI 53233  
Phone: 414-278-4231 Fax: 414-223-1380  
E-mail: [Patricia.Jursik@milwaukeeCountyWI.gov](mailto:Patricia.Jursik@milwaukeeCountyWI.gov)  
Website: [www.county.milwaukee.gov/Jursik](http://www.county.milwaukee.gov/Jursik)



## November 2015 E-NEWSLETTER

### COUNTY ASSIGNMENTS:

Judiciary, Safety & General  
Services  
Vice -Chair

Finance, Personnel  
& Audit

Transportation,  
Public Works &  
Transit

### SPECIAL COMMITTEES

Lake Parkway Extension  
Advisory Committee,  
Chair

Aging & Disability Resource  
Center (ADRC) Governing  
Board

Milwaukee County Research  
Park Corporation Board

Milwaukee Gateway  
Aerotropolis Corporation

## BUDGET HEARING

The Public Hearing for the revised Milwaukee County budget reflecting amendments created by the Finance Committee is scheduled for Monday **November 2, 2015 at 6:30 p.m.**; the location should be of interest to our constituents since the hearing will be located at the Domes in Mitchell Park with the new Greenhouse. The public will also be invited to have free access to the 3 flower Domes starting at 5:00 p.m.

## Budget Highlights for Our South Shore

~ The County Executive's Budget invests \$62,000 to repair the lift for the Stage at Wil-O-Way Grant Park. This lift has not been operational for quite a few years.

~ Rte. 51 Extension: Bus Rte. 51, which currently runs largely east and west on Oklahoma Avenue, and also makes a short trip along Lake Drive to the Marion Center, will be extended into St. Francis to serve the new F.B.I. headquarters. In addition, new construction is planned for the Bluff and the Triangle. The extension will run on a trial basis for six months starting in spring to allow the bus company to study passenger interest in the extension. This extension will allow the bus to "turn around" by using the triangle at the southern-most street at Howard, back north along Packard Avenue to Lake Drive and continue north to Oklahoma Avenue, which will allow the passengers to connect with many other bus routes going west on Oklahoma.

~ Layton Avenue Overlay: Layton is nearing completion and is not a new budget effort but, was included in last year's budget with added highway grant money. Sup. Haas of Bay View and I initiated this project due to driver complaints regarding the "wash board ride" of this county highway.

~ Airport: There are ongoing runway repairs each year. Noise abatement projects including barrier walls, to block sound, will also be continued. The airport will continue to work on the security fence along the perimeter. Our Baggage Claim area is now completed. Please look up when you

pass through the baggage area and view the Public Art Project that was included.

~ Bayview Park, St. Francis: will have 2,592 feet of the walkway replaced at a cost of \$158,902.

~ Oak Creek Parkway, South Milwaukee: from Chicago Avenue to the railroad tracks, will start the next phase of the road replacement. This year will be focused on planning of the roadway, the second phase will involve sewer and outfall replacement and the final phase will be new pavement. Last year concentrated on the electric and light upgrade.

~ Oak Creek Watershed Plan: Many citizens have made requests for Mill Pond to be dredged. As I investigated the situation, it became apparent that the health of Mill Pond is part of a larger ecosystem. To fully address the problems encountered, a study must be conducted upstream, beginning at the end of the creek. Along with Mayor Eric Brooks and former Mayor Tom Zepecki, the comprehensive plan for the Oak Creek Watershed was studied through SEWRPC, who gave an initial review and made recommendations. Mayor Brooks has now coordinated the efforts of MMSD, the County, South Milwaukee and SEWRPC to undertake these recommendations with a plan that costs in excess of one-half million. The good news for South Milwaukee is that the costs will be shared among all the communities along the Oak Creek with MMSD paying these costs. SEWRPC has also provided funding. The City and the County will complete this initiative. Our budget provides \$20,000 and will also apply for Great Lakes funding. The project is scheduled to begin in the spring of 2016.

### **AMENDMENTS: These are the amendments that I sponsored**

~ One amendment that I co-sponsored, was essentially to provide clarity to the budget and fill the “abatment” (i.e. deficit or hole) in the Sheriff’s budget regarding public safety. The County Executive negotiated \$80 Million (\$4M. funded yearly by the county for the Bucks Arena); this payment was hidden in the budget by creating an undefined deficit in the Sheriff’s budget. This Amendment clearly provides the 4 M. in the 2016 budget is paid through use of property taxes; the Sheriff’s deficit is similarly reduced by this \$4M.

~ Softball Diamonds: Cudahy and South Milwaukee have lost at least a half-dozen diamonds over the years. Citizens who rent a picnic area and will not have a ball diamond to use during their picnic. These diamonds were lost for various reasons, including water/sewer projects in Sheridan and new soccer fields among others. Therefore, I am introducing an Amendment seeking to obtain one diamond in Cudahy Park and one in Grant Park.

~ SARA Coordinator: This position is part of our Emergency Management Department; the County Executive’s budget removed this inspector and instead used the state grants that pay for this position to be contracted out and privatize the position. This person inspects all county hazardous substance sites and reports to the commission, which is required by state law, regarding the safety and storage of these substances. For example, Patrick Cudahy stores ammonia gas. I was contacted by a constituent who serves as a member of the committee and the fire chiefs of our district very concerned about the loss of this position and the highly experienced worker, with years of historical knowledge. After full review, I concur with these public servants. My amendment will restore this position, eliminate the contracting and use the grant money to continue funding the SARA coordinator. There is no tax money required.

~ Repair of the Milwaukee County Historical Society building: My amendment transfers a capital project from the Marcus Center, which may be transferred to the Wisconsin Center and no longer under county ownership, to this Society Building for a capital repair. Next time you are on 3<sup>rd</sup> and Kilbourn, the site of the building, look up at the top; you will see a “shrink wrap” around the cornice. This wrap has been in place for many years to protect the public from limestone falling off this cornice. It is truly a shame that we will be providing a new arena downtown while ignoring the care of our historical landmarks. This amendment will provide for the first year of a two year project at roughly \$2 M. each year for the repair.

<http://www.milwaukeehistory.net/wp-content/uploads/2014/01/MCHS-at-Dusk-1024x682.jpg>

**Please review the 2016 budget at this link and contact my office with questions:**

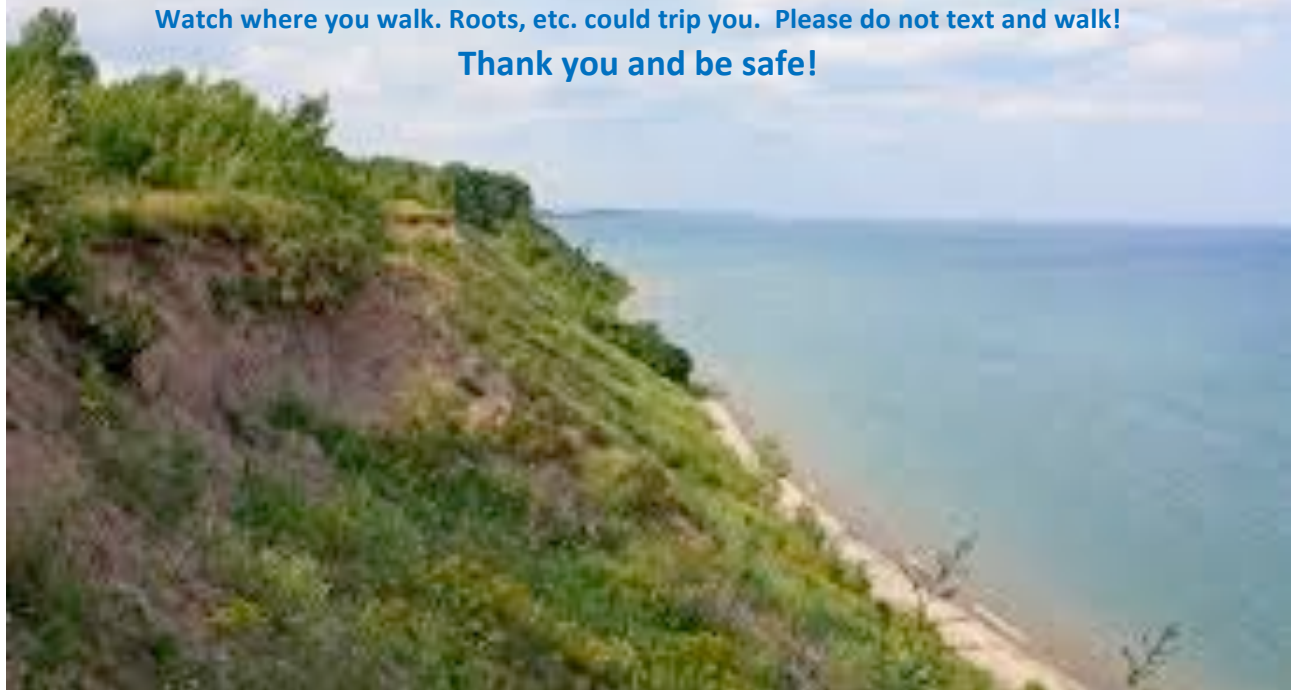
<http://county.milwaukee.gov/PSB/County-Budget/2016-Budget.htm>

---

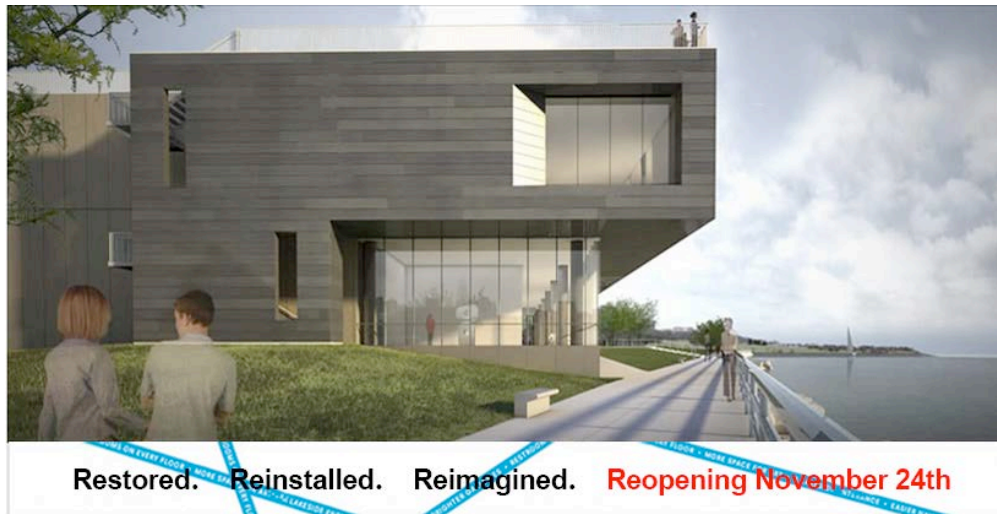
## **!!DANGER BLUFF WARNING!!**

Please be careful walking along Bluff-top. We have had at least 3 incidents over the last several months requiring rescue. And unfortunately, a tragic death occurred recently. Several cautions: never walk to the very edge of bluff. Try to picture the crest of a wave. You are standing on the point of this crest which can give way under your weight. Watch where you walk. Roots, etc. could trip you. Please do not text and walk!

**Thank you and be safe!**



## MILWAUKEE ART MUSEUM ADDITION TO OPEN IN NOVEMBER



Grand Opening of the new gallery at the Milwaukee Art Museum is scheduled for November 24, 2015 for public viewing. This is an exciting new venue for Milwaukee County citizens. The new extension is just east of the Kahler Building along the lake and includes a new coffee shop and a breathtaking viewing vista.

Please visit your Milwaukee County Art Museum!

### Mark your calendars

#### **Milwaukee Public Museum will be holding our second-annual BioBlitz next summer at Milwaukee County's Grant Park**

A BioBlitz is a scientific "race"-- a 24-hour species count by a team of scientists and surveyors that produces scientifically valid data, as well as interesting discoveries and public education about the biodiversity that exists in an urban setting. You can read and hear two WUWM stories about Milwaukee's first-ever BioBlitz [here](#) and [here](#). The first BioBlitz (run by MPM at Schlitz Audubon Center) counted 820 species in 24 hours, identified several Federal or State-listed endangered species that Audubon didn't know it had onsite, as well as discovered an invasive Asian worm that could, if left unchecked, devastate the Audubon Center's landscape.

**The Grant Park BioBlitz will take place June 10-11, 2016** and the public will be welcomed to base camp from 10 a.m.-3 p.m. on Saturday to meet the scientists, participate in activities with MPM educators, and watch the action. Grant Park was specifically selected because of the variety of landscapes and habitats it holds. More information forthcoming.



*South Milwaukee Mayor Eric Brooks welcomes guests to the South Shore Option 4.0 held at the beautiful South Milwaukee Performing Arts Center.*




*Supervisor Patricia Jursik (far right) invites representatives on stage to address questions regarding economic development plans for their communities. Pictured left to right - Oak Creek Mayor Stephen Scaffidi, South Milwaukee Mayor Eric Brooks, St. Francis City Administrator, Tim Rhode, Cudahy Mayor John Hohenfeldt (at podium).*

# GMIA Airfield Update Newsletter

## October 2015

Thank you for your interest in the General Mitchell International Airport (GMIA) Airfield Update. This newsletter is intended to keep you up-to-date on airfield construction projects, regular maintenance, and special events that could impact the standard flow of arriving or departing air traffic.

- **Airfield maintenance and construction projects** are wrapping up for the year, although there may be some intermittent daily runway closures through the end of October, particularly on runway 13/31. These closures could result in a short-term noise decrease or increase in surrounding neighborhoods.
- **No long-term runway closures** are anticipated until the spring of 2016.
- Mitchell Airport recently re-installed two **airfield signs** reminding pilots to follow the airport's noise abatement procedures when departing southbound from Runway 19R. The signs had been temporarily out of service during this summer's airfield rehabilitation.
- The **Ground Run-up Enclosure (GRE)**, closed since August for concrete panel replacement, is expected to reopen in November. The GRE is an 80,000 square-foot structure with sound-absorbing panels that help reduce noise during aircraft engine run-ups and testing. [Click here](#) if you're interested in learning more about the GRE.
- A **new vehicular bridge** over Howell Avenue opened earlier this month. This closed-access bridge allows GMIA maintenance, support and emergency vehicles to access southern sections of the airfield without having to cross any runways or taxiways.

Thank you for your interest in the activities of GMIA. If you are not on our mailing list, please click the "Subscribe" button at the end of this newsletter. Please share with your neighbors; perhaps they would like to receive this newsletter as well.

## GMIA Runway Layout

### Runway 7R/25L

Open.

### Runway 1L/19R

Open.

### Runway 1R/19L

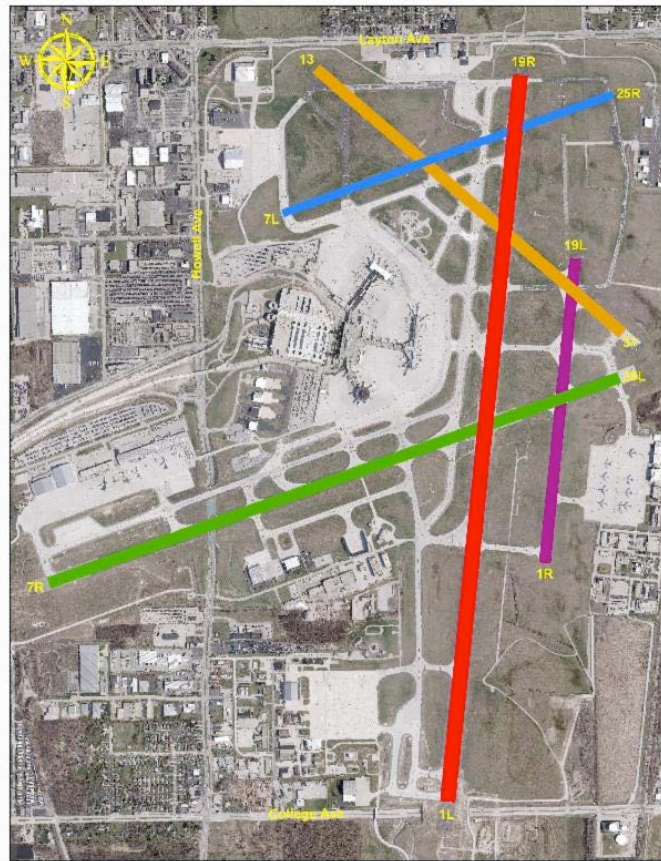
Open.

### Runway 13/31

Short-term closures through October.

### Runway 7L/25R

Open.



## KELLY SENIOR CENTER

6100 S. Lake Dr., Cudahy WI 532110

414-481-9611

### Morning Stretch/Rhythmic Dance

Mondays and Fridays, starting Monday, November 2, 9:15 a.m

Exercise to a video followed by dancing. It's informal, fun and good for you

### Card Creating Class

Tuesdays, starting November 3, 9-11 a.m.

Fee: \$8/4 weeks

Learn how to create your own cards in this fun filled class!

**Tai Chi**

Wednesdays, starting November 4, 9:30 a.m.

Fee: \$24/4 weeks

Tai Chi is a slow-motion, meditative exercise for relaxation and health. All fitness levels are welcome.

**Painting and Drawing**

Wednesdays, starting November 4, 9:30 a.m.

All levels are welcome. Join in the fun and get assistance from experienced artists.

**Beginner Spanish**

Wednesdays, starting November 4, 1:00 p.m.

Fee: \$13 Quarter

Come and learn how to “hablar español” (speak spanish) as well as learn about the Spanish Culture.

**Memory Chargers**

Thursday, November 5, 10:00 a.m.

The Memory Chargers group invites you to join them for an informative, interactive hour including some activities to keep your brain healthy and vigorous

**Scrabble**

Thursdays, beginning November 5, 10:00 a.m.

Come demonstrate your vocabulary skills while having fun with your friends.

**Arthritis Foundation Exercise Program**

Thursdays, starting November 5, 1:00-2:00 p.m.

Fee: \$9/3 Weeks

Move joints through their range of motion and build muscles to support weak joints by using therabands, weights and safe strength building exercises.

**Salsa Dance Lessons**

Fridays, starting November 6, 1:00 p.m.

Fee: \$13/Quarter

Salsa is a lively, vigorous type of contemporary Latin American popular music, blending Cuban rhythms with jazz, rock and soul.

**Computer Tutoring Sessions**

Mondays, beginning November 9, 1:15 or 2:00 p.m.

Preregistration required

Sign up for a one-on-one session with an instructor to learn to maximize your knowledge of your personal computer or tablet

**Eat at Rocky Rococo's**

Monday, November 9, 11:00-8:00 a.m.

15% of all sales during this time period will be donated to the Kelly Senior Center. Must present voucher at time of purchase for Kelly to get credit. Vouchers will be available in advance at the center for pick up. Thank you for your support!



### **Veteran's Day Celebration**

Tuesday, November 11, 10:30 a.m.

Celebrate with the Kelly Center to honor our veteran's for their service for our country. The event begins with a presentation from Kelly Friend, Jim Briselden, about his time on the Honor Flight.

### **Chair Yoga Workshop**

Thursday, November 12, 9:00 a.m.

Fee: \$6/1 Week

Practice yoga sitting in a chair or standing using the chair for support. Chair yoga helps your balance, flexibility and improves your overall health.

### **Gentle Yoga Workshop**

Thursday, November 12, 10:30 a.m.

Fee: \$6/1 Weeks

Yoga improves balance and concentration and reduces stress. Gentle Yoga is safe for all ages, body types, and challenges and can be adapted to improve anyone's fitness, starting right where you are now.

### **Women's Group**

Monday, November 16, 1:00 p.m.

Fee: \$5

All of the ladies are encouraged to attend this monthly group that meets September through May, which focuses on friendship, charitable crafts, informational speakers on a variety of subjects, and much more.

### **Kelly Fall Dance**

Tuesday, November 17, 1:00 p.m.

*Sponsored by Wilson Commons*

Enjoy, music, dancing, and fun at this great event.

### **Safe and Sound: Inside the House and All Around**

*Presented by A Place for Mom*

Wednesday, November 18, 10:00 a.m.

Discuss general home safety tips for the coming weather. A fun Trivia Game will provide reminders of key messages within the presentation

### **Blood Pressure Checks**

Thursday, November 19, 10:30-12:00

A simple tool to be healthy and stay healthy. Blood Pressure checks are on a first come first serve basis and travel between the Main Building and South Building

### **Stockbox - Do You Qualify?**

Thursday, November 19, 12:30-1:30 p.m.

Are you making less than \$1275 a month (single) or \$1726 (2 person household)? If yes, you may qualify for a stockbox from the Hunger Task Force. Stockboxes are free, pre-packaged boxes of food delivered to the senior centers. They are filled with nutritious items that can round out a meal. Come to the office for more information.

### **Everyone Loves Pie!**

*sponsored by Villa St. Francis*

Thursday, November 19, 12:30 p.m.

Mmmmm pie, coffee, and fun as a pre-holiday treat.

### Movie Time

Friday, November 20, 12:30 p.m.

This month's movie is *Love and Mercy*, starring John Cusak. A captivating story about Brian Wilson of the Beach Boys and his struggle to overcome his demons.

### Book Club

Wednesday, November 25, 1:00 p.m.

Book to discuss: *Invisible: My Journey Through Vision and Hearing Loss* by Ruth Silver.

December's Book, *The All-Girl Filling Station's Last Reunion*, by Fannie Flagg is available for pick up at the library after December 1st.

### Bingo

Sponsored by Williamstown Bay

Wednesday, November 25, 1:00 p.m.



### GROBSCHMIDT SENIOR CENTER

2424 15<sup>th</sup> Ave., South Milwaukee, WI 53172

768-8045



Annual Holiday Bazaar  
Saturday, November 14th  
9 a.m.—1 p.m.



It's time for the senior center's biggest fundraiser of the year—the Annual Holiday Bazaar. Once again, we will be having some fantastic raffle items, beautiful and unique homemade craft items, an ever tempting delicious array of baked goods and the “you never know what you will find”, white elephant sale. Lunch items will be available to purchase. Entrance into the bazaar is free and the raffle items will be drawn at 12:45 p.m. on the 14th. As we prepare for the bazaar, remember we need everyone's help! You don't need to bake the day of the event, bake a few days prior and drop your items at the senior center. We can freeze them and pull them out for the sale. Once again, we will be baking Kolache on Friday, Nov. 13th, beginning at 9:00 a.m. Please pre-register so we know how many bakers we will have. The white elephant sale is always a big hit and items can be brought in at any time. Items can be anything that has been “gently used” and not broken or brand new. Remember to bring in things that you, yourself, would like to purchase! Raffle items are also a “big draw” at the bazaar. If you have a larger item you would like to donate, please see Sandy. We have always had wonderful raffle items, let's keep the tradition going! And of course, we are always looking for new and unique items to sell on the craft table. Center members will be able to purchase an eight foot table for \$15.00 to sell their homemade craft items. Tables will be reserved on a “first come first served” basis so please see Sandy if you are interested in renting one. Last year the center made a profit of \$2,534.23. The monies earned are used to help supplement parties and events at the senior center. A huge thank you to everyone who has helped, and who will be helping, in this year's event!



## Kolache Time

Each year, for the Holiday Bazaar, Joe and Janet Kuzma travel to Amish Country in Wisconsin and purchase wonderful and delicious fillings to use in the Kolache! Baking these tasty treats has become an annual tradition here at the senior center. As in the past, many bakers will gather on Friday morning, November 13th, and will bake dozens of Kolache. They will be priced, 6 for \$3. Come early to the bazaar on Saturday and choose your favorite flavor! If you are planning on baking Friday please sign up so we can plan accordingly.

---



## Annual Christmas Party Saturday, December 12th 11:30am-3:30pm

Celebrate the Holiday Season at the senior center's Annual Christmas Party on Saturday, December 12th! We will be dancing to the music of *Remember When* and feasting on a delicious lunch prepared by Pulaski Inn. The doors will open at 11:00 am and lunch will be served at noon. Prior to lunch, we will be enjoying some appetizers of ham rollups with cream cheese and Swedish-style meatballs. Lunch will consist of the following items: Baked ham, Roast Beef, Polish Sausage, mashed potatoes and gravy, Caribbean blend vegetables, tossed salad, deviled eggs, assorted rolls, decaf coffee and dessert. Tickets will go on sale Thursday, November 5th at 9:00 am. The cost for each ticket will be \$18.00. The party is open to center members only, and people are able to purchase up to four tickets. The last day to buy tickets for this event will be Monday, November 30th.

## Stock Box Program

Tuesday, November 24th, 2015  
10:30 a.m.-11:30 a.m.

The senior center is a distribution site for the Stock Box Program. The food distribution this month will take place on Tuesday, November 24th from 10:30-11:30 a.m. The stock boxes will be given out in the back parking lot with paperwork being filled out in the large hall area. The Stock Box Program is run by the Hunger Task Force and does have eligibility guidelines. Participants need to live in Milwaukee County, be at least 60 years of age, and have an income that is less than, or equal to the following: Eligibility has increased slightly from previous months.

Household Size	60 years of age
1	\$1,275
2	\$1,726
3	\$2,176

For more information about this program, please talk with Sandy, read the brochures available at the senior center, or call 211. This institution is an “equal opportunity provider.”

---



### Partnership with Hunger Task

This year Hunger Task Force is building 800 Holiday bins that will be delivered, right before the holidays, to local families. Each bin contains nearly 30 special food items, including a huge turkey or ham, plus all the traditional fixings. Also included in the bins are other needed food items such as cereal, macaroni and cheese and juice. Each staff member at Hunger Task Force is working to collect a specific item for the bins, and we have been asked to collect **64oz bottles of juice**. The bin is located by the front entrance and will be emptied on Thursday, December 10th.

## Friends of Cudahy Library FALL VENDOR FAIR

Saturday, November 7      10:00-3:00 p.m.  
Sunday, November 8      12:00-3:00 p.m.

Cudahy Family Library - 3500 Library Drive

Featuring some of your favorite products as well as beautiful handcrafted creations!

Carol's Creative Crochet  
Crafts for Fun  
Crocheted Gifts for Kids by Sarah  
Jamberry Nails  
Jan's Originals  
Jen's Sweet Treats  
L'Bri Pure n Natural Skincare  
Lyon's Fleece Tie Blankets  
Magpies Delight  
Miche  
Pampered Chef  
PartyLite  
Perfectly Posh  
Tastefully Simple  
Thirty-One  
Tupperware  
Village Spinners Guild  
Young Living Essential Oils  
More vendors will be added!

Support local vendors and the library! Get started on your holiday shopping!

---



### Grant Park Watch & Friends of Grant Park

**Thursday, November 12, 2015, 6:30 p.m.**

Grant Park Clubhouse, 100 Hawthorne Av., South Milwaukee

Park Watch: 764-7262

Friends of Grant Park: 764-0612, [www.fogp.org](http://www.fogp.org)



### Friends of Mill Pond meeting & Oak Creek Watercourse, Inc.

**Tuesday, November 10, 2015, 6:30 p.m.**  
Marquette Manor 2409 10<sup>th</sup> Av., South Milwaukee  
571-1191, [www.smfomp.org](http://www.smfomp.org)

---



### Cudahy Neighborhood Watch

**Wednesday, November 25, 2015, 2015, 6:00 p.m.**  
Cudahy Family Library  
3500 Library Dr., Cudahy  
414-324-5531

---



### Friends of Pulaski Park

**Monday, October 16 2015, 6:30 p.m.**  
Pulaski Park Pavilion  
5400 S Swift Ave., Cudahy

**ANNUAL MEETING  
FRIENDS OF PULASKI PARK – CUDAHY**

Monday, November 16, 2015

6:30 – 8:00 p.m.

Hear what we have accomplished and the goals we would like to achieve. Light refreshments will be served

Kindly RSVP: Barb Kaprelian (414) 482- 3090

[barbperkup@sbcglobal.net](mailto:barbperkup@sbcglobal.net) or

Adam Nowaczynski (414) 614- 3119

[anowaczynski@wi.rr.com](mailto:anowaczynski@wi.rr.com)

By: November 13<sup>th</sup>

**Save the Date**

Santa in the Park, Sunday **December 6, 2015** at

Pulaski Park Pavilion-Cudahy.

Featuring a Silent Auction, Bake Sale  
and Hot Dog Lunch.



Free the first Thursday of every month. Free for all visitors!

Visit [www.mam.org](http://www.mam.org) for additional information.



Thank You Thursday from 9:00 a.m. - 8:00 p.m. Free general admission to MPM on the first Thursday of every month. Visit [www.mpm.edu](http://www.mpm.edu) for additional information.



Free on Mondays from 9:00 a.m. - Noon  
Excludes major holidays. Visit [county.milwaukee.gov/HoursAdmissionMap10117.htm](http://county.milwaukee.gov/HoursAdmissionMap10117.htm) for additional information.



Remaining 2015 Free Days: October 10, November 7 & December 5

Special Holidays Free Days:  
Thanksgiving Day, Christmas Day and New Year's Day

Visit [www.milwaukeezoo.org](http://www.milwaukeezoo.org) for additional information.



## **Aurora Saint Luke's South Shore** **5900 S. Lake Drive, Cudahy, WI**

### **Aurora Saint Luke's South Shore Blood Drive**

5900 S. Lake Dr., Cudahy (in auditorium)

Thursday, November 19, 2015

7:00 a.m. to 11:30 a.m.

Sign up at [www.bcw.edu/Aurorass](http://www.bcw.edu/Aurorass)

Or call 877-232-4376

Appointments Encouraged. Thank You!

Making a difference in your community! Come join our volunteer team at Aurora St. Luke's South Shore and bring a smile to someone's day! Volunteers needed to provide comfort and assistance to our patients and visitors.

Some of the volunteer opportunities we have are:

- Spiritual Care
- Escort
- Musical Medicine
- Ambassador
- Floor Assistant
- ED
- Patient Companion
- Retired RN for BP screenings every 2<sup>nd</sup> and 4<sup>th</sup> Monday 1:00-3:00 p.m.
- Vince Lombardi Cancer Clinic Volunteers
- PT/OT Volunteers
- NODA
- Cookie Bakers
- GI
- Pet Therapy
- Clerical

Please contact [Volunteer.Services@aurora.org](mailto:Volunteer.Services@aurora.org) for an application.





## Milwaukee County Board of Supervisors

901 N. 9<sup>th</sup> Street, Room 200

Milwaukee, WI 53233

(414) 278-4222

### Upcoming Meetings

- \*County Board **Public Hearing** – Monday, November 2, 2015 @ 6:30 p.m. (Domes)
- \***Regular** County Board – Thursday, November 5, 2015 @ 9:30 a.m. (Courthouse Rm 200)
- \*County Board **Budget Adoption** - Monday, November 9, 2015 @ 8:30 a.m. (Courthouse Rm 200)