



Joe Sanfelippo



Milwaukee County Supervisor - 17th District

901 9th Street, RM 201, Milwaukee, WI 53233-1425

Phone: 278-4247 E-mail: joe.sanfelippo@milwcnty.com

Website: <http://www.county.milwaukee.gov/Sanfelippo>



October 2010

Committee Assignments:

Parks, Energy and Environment (Vice-Chair) • Judiciary, Safety and General Services • Personnel

Dear Friends and Constituents,

I know it's hard to believe, but three quarters of the year is already over. It seems like I was just writing the January E-Newsletter and now here is the October issue.

The next six weeks will be some of the busiest for the County Board. Along with the regular monthly meetings of the standing committees, the main focus in October will be the 2011 County Budget. By November 8, we will have adopted a Budget for 2011. Because the decisions we make will affect each and every county resident, I strongly urge you to take the time to get actively involved in the process.

Last year, our Finance & Audit Committee Chairwoman, Elizabeth Coggs, did a great job conducting the hectic budget hearings schedule in a very open and inviting process, and I am sure this year will be no different. All of these hearings, which take place almost daily during October, are open for public attendance and comment and will culminate in the main Public Hearing on Monday, November 1, 2010 at 7:00pm at the Washington Park Senior Center, 4420 W. Vliet Street, Milwaukee. I will also personally conduct three separate town hall style meetings at various locations throughout the district. (You can find a list of dates, times and locations of my meetings on Page 3.)

As you know from my previous newsletters, Milwaukee County is facing a severe structural deficit. In August, I introduced my Blueprint for Restoring Financial Solvency in Milwaukee County Government. The decisions we make for the next budget will either move us toward that goal of solvency or continue to lead us over the cliff to financial ruin.

This is your money we are spending, and it is in your best interest to make your voice heard. So I hope you will seriously consider setting aside some time this month to attend at least one of these meetings, learn what is being debated, and make your views known.

I look forward to seeing you at the meetings. Have a happy and safe Halloween.

County Executive Walker's Recommended 2011 Budget

On September 30, the County Executive proposed his Recommended Budget for next year. The budget proposes a \$1 million **decrease** in County property taxes while fully funding and, in some cases, increases funding for core County services. You can view the [2011 Executive Budget Highlights](#) here.

Considering the fact that so many families are struggling to make ends meet these days, it is not unreasonable for the County to reduce the tax burden on its citizens, and I applaud the County Executive for taking this bold action.

In the past, the Recommended Budget from the County Executive has been met with stiff resistance from a majority of the Supervisors on the County Board. Once again, I strongly urge you to get involved with the budget process and make your views known. As I said before, it's your money we are spending.

Mental Health Hospital Update

The Citizen Advisory Board put together by County Executive Walker and Chairman Holloway, of which I am a member, has been meeting for three months. At the September meeting of the Health and Human Needs Committee, Co-Chairs Barbara Beckert of Disability Rights Wisconsin and Paula Lucey, Executive Director of Willowglen Academy-Wisconsin, Inc., a subsidiary of Phoenix Care Systems, gave the first quarterly report of the work that has taken place so far. I also prepared a report that I distributed to the County Executive, the Board Chairman and all Supervisors outlining the progress by the various subcommittees. You can view my report at [CAB September Report PDF](#).

Along with the work of this committee, the County Auditor will be issuing a report reviewing current safety procedures and the Public Policy Forum will release a report based on a year-long study they have been conducting with a nationally recognized firm specializing in the delivery of mental health care. Both of these reports are expected to be released this month.

You may recall that, a few weeks ago, some members of the County Board held a news conference wherein they committed to building a new mental health hospital on the County grounds. While there is no doubt our current facility is outdated and in need of replacement, charging full speed ahead with building a new hospital before we have had a chance to review the studies by the Auditor and the Public Policy Forum, and before the conclusion of the work by the Citizen Advisory Board, is premature.

The new facility we eventually end up building will cost tens of millions of dollars and serve our patients for decades to come. Rather than building the hospital first and then deciding how we will be delivering the care, we should first decide on the best way to provide the successful care our patients deserve and then build the facility to fit the program. The emphasis should be on what is best for the patients, not on the building.

Resolution to Protect Transit Dollars

In the August E-Newsletter, I wrote about a resolution Supervisor Rice and I are proposing to protect our Milwaukee County Transit System funding. Unfortunately, this resolution was laid over by some members of the Transportation, Public Works, & Transit Committee during the September meeting cycle.

Ironically enough, the pro Kenosha-Racine-Milwaukee (KRM) commuter line advocates that spoke against our resolution at that meeting proved our point that they really want the potential funds raised by a County sales tax increase to be used to prop up the KRM line, which is predicted to cost millions more than it will take in via fares.

Milwaukee County taxpayers should not be forced to pay for the KRM commuter line, especially while our bus system is struggling financially. If a sales tax increase is approved, which I hope it will not be, I will continue to fight to make sure all the money raised in Milwaukee County stays in Milwaukee County. We must not be the “sugar daddy” for the KRM line.

District 17 Town Hall Meetings

I will host three Town Hall Meetings in the 17th District in October. Issues to be discussed include the 2011 County Budget, my Blueprint for Restoring Financial Solvency to Milwaukee County Government, district related issues and other matters important to the residents of District 17. If you cannot attend the date that is being held in your community, please attend one of the others as I would like to meet with as many constituents as possible. If you cannot attend any of the meetings and would still like discuss specific issues, please do not hesitate to contact me.

West Allis

West Allis Public Library, Constitution Room
7421 W. National Ave. West Allis, WI
Monday, October 25th, 2010 6:30-8:00pm

Greenfield

Greenfield Public Library, Conference Room
5310 W. Layton Ave. Greenfield, WI
Tuesday, October 26th, 2010 6:30-8:00pm

Greendale

Greendale Safety Center, Courtroom
5911 W. Grange Ave. Greendale, WI
Wednesday, October 27th, 2010 6:30-8:00pm



Boo at the Zoo

Sponsored by Westbury Bank

Be ready for the Halloween Hauntings during this “not-too-spooky” event at your Milwaukee County Zoo. Take a chance at finding your way out of a haystack maze, ride the “Raven’s Rail,” create your own Origami bat and more!

October 22 & 23, 2010
9:00am-4:30pm



10001 W. Bluemound Road, Milwaukee

Visit www.milwaukeezoo.org for more information

Halloween Haunts at the Wehr Nature Center

Follow the night travelers into the Enchanted Forest for a humorous, educational, and slightly spooky trek along a jack-o-lantern lit trail.

Tickets must be purchased in advance.

Tickets now on sale:

Age 13 & up- \$8

Age 12 & under- \$6

Age 2 & under- Free

Thursday, October 14, 2010

Friday, October 15, 2010 Friends of Wehr only

Saturday, October 16, 2010

6:30-8:30pm Rain or Shine

9701 W. College Ave., Franklin

(414) 425-8550 or visit www.countyparks.com

Rainforest Night at the Domes!

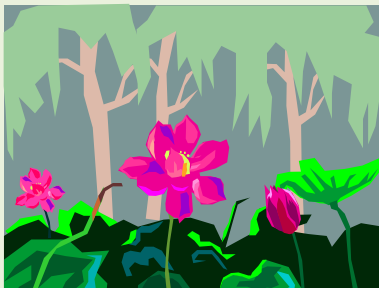
Come and explore the “Tropical Rainforest” at your Mitchell Park Domes.

You will learn about the fascinating rainforest and will be able to sample tasty products from the rainforest including chocolates, plantains, nuts, coffee, and exotic fruits and juices. Get up-close and personal with tropical birds!!

Make-your-own sundae bar is included with admission.

Friday, October 8, 2010
6:30-9:30pm

524 S. Layton Blvd., Milwaukee



Halloween Trick-or-Treat at the Milwaukee County Zoo

Sponsored by Westbury Bank

Bring the kids and treat-or-treat with the animals! Have your children participate in a costume parade, musical illumination show, and watch bat presentations in the Small Mammal Building.



October 29 & 30, 2010
9:00am-4:30pm

10001 W. Bluemound Road, Milwaukee

Visit www.milwaukeezoo.org for more information

Community Paver/ Brick Ideas

THE
WRIGHT
FAMILY

THANKS VETS
WILSON
FAMILY

HALES CORNERS
CHAMBER
OF COMMERCE

THANK YOU

WE'LL NEVER
FORGET
MARIA'S PIZZERIA

WE'LL ALWAYS
REMEMBER YOU
UNCLE MIKE

ACME
SYSTEMS

WILLIAM-LISA
MATHEW-KAREN

THE SCHROEDER
FAMILY

Personalized Veterans Paver / Brick Ideas

CHARLES JONES
US NAVY
1955-1959

SGT ALFRED
MARTIN
CIVIL WAR

PVT JOHN SMITH
US ARMY
VIETNAM ERA

CAPT. BRIAN
HART
ARMY 1968 KIA

CLARENCE WOLF
US ARMY
WWI 1916-1918

Brick colors will vary to blend with the landscaping

Visit us at www.halescorners.org

The Hales Corners Veterans Memorial



We need your help to complete our vision!

The Hales Corners Veterans Memorial Committee has completed the architectural drawings for this memorial which will be located in Hales Corners Park.

For the next phase, fundraising will be our focus and we'll need support from the community.

During this time of giving and reflection what better gift could you give to your family or loved one than a gift that will give back every time you drive past or visit this memorial?

**This phase of the Memorial
will be used to purchase tribute bricks.**

Bricks (8"x 4") for all past and present veterans will be placed at the base of the memorial for a donation of \$100.

Bricks (8"x 4" & 8"x 8") from any member of the community will be placed along the outer rings. An 8"x 4" brick includes up to 3 lines of 13 letters, characters and spaces per line for a donation of \$100. An 8" x 8" brick includes up to 6 lines of 13 letters, characters and spaces per line for a donation of \$200. (see samples on the back page)

Five 24"x 24" bricks will be available for \$5,000 each and a few 16"x16" bricks for \$1,500 each.

Please check your preference: (copy this page for multiple bricks)

- 8" x 4" Veteran Personalized (\$100)
- 8" x 8" Veteran Personalized (\$200)
- 8" x 4" Community Paver/Brick (\$100)
- 8" x 8" Community Paver/Brick (\$200)

Line 1

Line 2

Line 3

Continue on for 8" x 8"

Line 4

Line 5

Line 6

The Hales Corners Veterans Memorial Committee reserves the right to review all wording for engraving.

Please return this form, with a check, for your brick purchase or a donation to the Memorial to:

Hales Corners Veterans Memorial Committee
P.O. Box 34
Hales Corners, WI 53130

All donations are tax deductible

Purchaser's Name _____

Address _____

City _____ State _____

Zip Code _____ Phone _____

Date _____ Amount Enclosed _____

Questions??

**Call Howard Hingiss (414) 425-5276
Mitchell McGlenn (414) 232-5244
or Don Schwartz (414) 418-8299**

Visit us at www.halescorners.org

It is our intention to have bricks that are sold this fall and winter installed by next spring and summer.

Thank You For Your Generosity!

Your help will make this memorial a place the whole community will be proud to visit.

The name of each veteran remembered in this dignified park recalls the duty each one bore and the sacrifices of the dear ones they left behind.