

LEGEND

- SB 124-4
- GP-1
- ⊕ MW-149-1
- ⊕ GP-15
- ⊕ GP-16
- ⊕ GP-17
- ⊕ GP-18
- ⊕ GP-23

2001 - PAH RCL EXCEEDANCES FROM 6'-8' FOR:
 2-METHYLNAPHTHALENE,
 ACENAPHTHENE, BENZO(a)ANTHRACENE,
 BENZO(g)PYRENE, BENZO(b)FLUORANTHENE,
 BENZO(k)FLUORANTHENE,
 DIBAZ(a,h)ANTHRACENE, INDENO(1,2,3-cd)PYRENE,
 NAPHTHALENE, PHENANTHRENE

2003 - PAH RCL EXCEEDANCE FROM 6'-8' FOR:
 BENZO(a)ANTHRACENE

- ⊕ GP-1
- ⊕ MW-149-1
- 3.840

APPROXIMATE SOIL BORING LOCATION INSTALLED JUN 2001
 APPROXIMATE TEMPORARY WELL LOCATION INSTALLED JUN 2001
 APPROXIMATE TEST PIT LOCATION 4-DVANCED JUN 2003
 APPROXIMATE SOIL BORING LOCATION INSTALLED NOV 2003,
 APR 2004, OR JUN 2004
 APPROXIMATE MONITORING WELL LOCATION INSTALLED NOV 2003

POLYNUCLEAR AROMATIC HYDROCARBONS (PAH) COMPOUNDS AND
 CONCENTRATION (mg/kg) DETECTED IN SOIL SAMPLE ABOVE THE
 RESIDUAL CONTAMINANT LEVEL (RCL) IDENTIFIED ON THE
 ACCOMPANYING TABLES, AT THE SPECIFIED INTERVAL (FEET BELOW
 THE GROUND SURFACE)

APPROXIMATE AREA OF TOTAL LEAD >250 mg/kg WITHIN
 UPPER 4 FEET OF SITE SOILS (DASHED WHERE INFERRRED)

SAMPLE COLLECTED EITHER DID NOT CONTAIN DETECTABLE PAH
 CONCENTRATIONS OR CONTAINED PAH CONCENTRATIONS
 BELOW THE PAH RCLs.

NOTES


1. BASE MAP FROM 2001 PHASE II REPORT FOR REDEVELOPMENT AREAS BY NHTB AND FROM WISDOT CONSTRUCTION DRAWINGS FOR PARK EAST FREEWAY.
2. BOLD RED SOIL BORING LOCATIONS INDICATE THAT AT LEAST ONE PAH COMPOUND WAS DETECTED ABOVE THE RCL IN AT LEAST ONE SOIL SAMPLE COLLECTED FROM THIS LOCATION.
3. NONE OF THE RCL EXCEEDANCES WERE DETECTED IN THE UPPER 4 FEET OF SOILS, AND NONE APPEAR TO HAVE CONTAMINATED GROUNDWATER



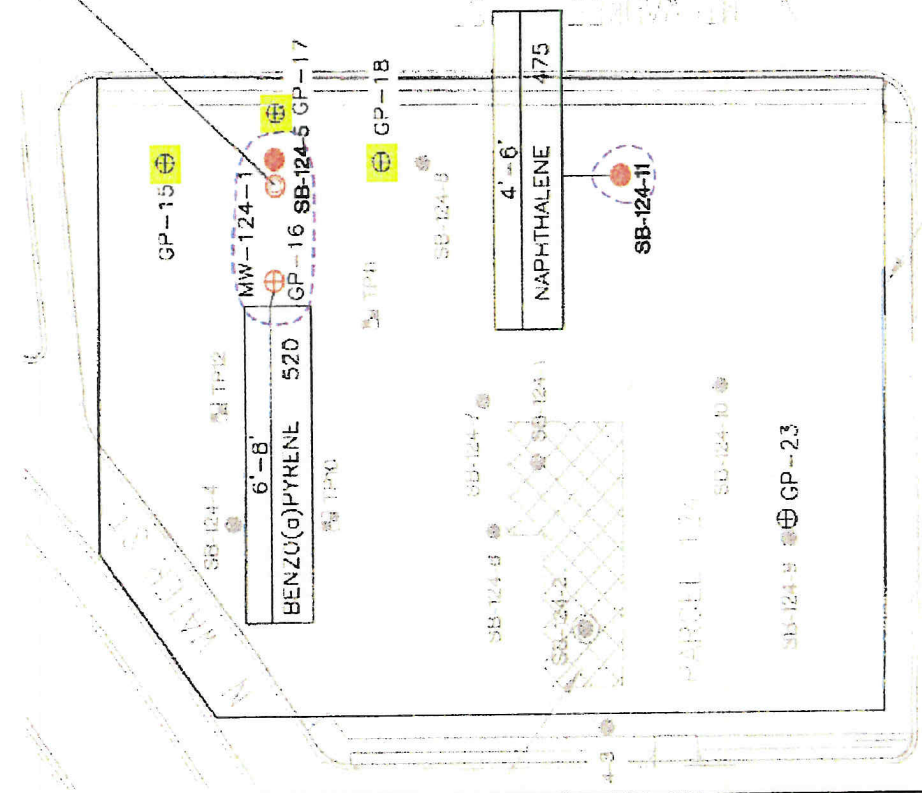
PAH CONCENTRATIONS IN SOIL >RCLs
FORMER PARK EAST FREEWAY
REDEVELOPMENT AREA 3
MILWAUKEE, WISCONSIN

Parcel 124

Adapted from the following map by
 Sean Hayes of Milwaukee County 12/9/04



DWG. BY: MHS
 APPROVED BY: KMY
 DATE: JULY 2004
 PROJ. # CO-06493.02
 FILE # 64930204.DWG



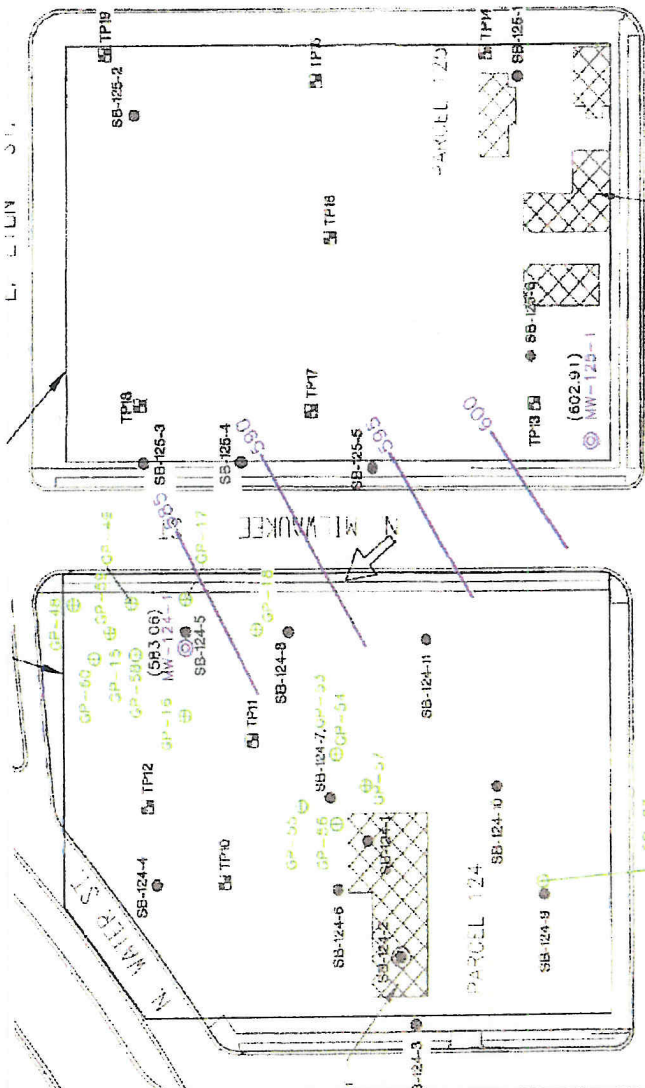
LEGEND

- SB-124-4 APPROXIMATE SOIL BORING LOCATION INSTALLED JUN 2003
- SB-124-2 APPROXIMATE TEMPORARY WELL LOCATION INSTALLED JUN 2001
- TP1 APPROXIMATE TEST PIT LOCATION ADVANCED JUN 2003
- GP-1 APPROXIMATE SOIL BORING LOCATION INSTALLED NOV 2003, APR 2004, OR JUN 2004
- MW-143-1 APPROXIMATE MONITORING WELL LOCATION INSTALLED NOV 2003
- (579.63) GROUNDWATER ELEVATION IN MONITORING WELL ON 3/31/04
- INTERPOLATED GROUND WATER ELEVATION CONTOUR
- INTERPOLATED GROUND WATER FLOW DIRECTION



NOTES


1. BASE MAP FROM 2001 PHASE II REPORT FOR REDEVELOPMENT AREAS BY HNTB AND FROM WISDOT CONSTRUCTION DRAWINGS FOR PARK EAST FREEWAY.
2. NO METALS OR VOCs HAVE BEEN DETECTED IN GROUNDWATER COLLECTED FROM MW-124-1 & MW-125-1 ABOVE THE RESPECTIVE NR140 PREVENTION ACTION LIMITS.



**GROUNDWATER CONTOUR MAP
FORMER PARK EAST FREEWAY
REDEVELOPMENT AREA 3
MILWAUKEE, WISCONSIN**

Parcels 124 and 125

Adapted from the following map by
Sean Hayes of Milwaukee County 12/9/04



DWN. BY: MHS
APPROVED BY: KMY
DATE: JULY 2004
PROJ. # 00-06493.02
FILE # 64930205.DWG